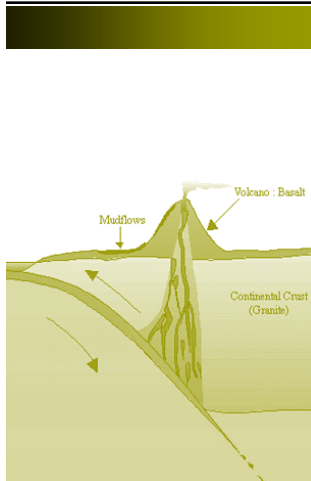


The Official

# AEG OREGON CHAPTER NEWSLETTER

<http://www.aegoregon.org>



## Message from the Chair

Hello Oregon Chapter!

June and July brings days when it's hotter in Portland than it is in Phoenix AZ and an end to the fiscal year for the Chapter. With eyes focused on next year and coming back together, like the good Ole days, elections for AEG Oregon Chapter Board positions revitalizes the spirit. I encourage you to review the candidates, make your selection for the board transition, and return your ballot to me. Please welcome Ryan Cole as candidate for the Secretary board position.

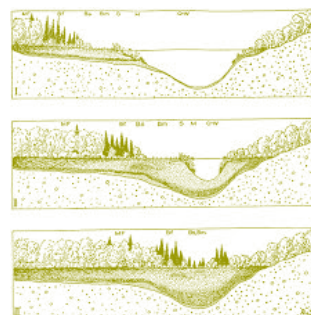
We have had a drastically different year than any before it and I hope that the talks this year were worth the extra internet meetings to your day. With things looking positive in the fall, we are looking forward to having in-person meetings. With the utmost caution we will evaluate the safest way to do this under State and Federal guidelines. We plan to continue streaming our monthly meetings to AEG Members. The board sees our pool of our potential speakers expanding as we can invite speakers from around the world. Be sure to check your membership status at [aegweb.org](http://aegweb.org) and let me know if you need help with renewal or new membership. Let us know if there is a speaker you would like to hear at an Oregon Chapter meeting.

Be safe this summer, get great projects, and we will be back together in a few months. We can share our struggles and battles of the last year with our friends over food and beverages.

See you all soon,

Mike Marshall

AEG Oregon Chapter Chair 2020-2021



*"The earth is large and  
old enough to teach us  
modesty."*

*Hans Cloos*

## BALLOT FOR ELECTION OF OFFICERS AEG OREGON CHAPTER 2021-2022

Please indicate your vote by checking the box next to the candidate's name for each office or by writing in a name. Your ballot should be sent to Mike Marshall (Chapter Past Chair) [mmarshall@gri.com](mailto:mmarshall@gri.com) Please return by July 31, 2021. The new officers will be announced at the September meeting.



### CHAIR

Nancy Calhoun

Nancy Calhoun is a natural resources specialist for the Oregon Department of Geology and Mineral Industries (DOGAMI). She received a Bachelor of Arts in geology from Colorado College and a Master of Science in earth sciences from Simon Fraser University, Vancouver, BC. Her Master's thesis focused on a giant, early Holocene landslide in the eastern Swiss Alps- the Flims landslide- and associated secondary mass movements. Nancy conducts landslide hazard mapping and risk assessments, and contributes to a variety of projects within the natural hazards and earth sciences group of DOGAMI.

(write in line \_\_\_\_\_)



### CHAIR-ELECT

Aine Mines

Aine has been involved with Oregon AEG since 2017. She received her BA in Earth and Planetary Science from Washington University in St Louis in 2007 and an MS in Civil and Environmental Engineering from UC Berkeley in 2011. Since moving to Portland in 2011, Aine has been working for Cornforth Consultants, Inc. (Landslide Technology) as a geotechnical engineer and engineering geologist, specializing in geotechnical investigations, geologic reconnaissance, soil and rock slope stability, and the emerging field of geotechnical asset management. She is a Registered Geologist and Certified Engineering Geologist in both Oregon and Washington and a Professional Engineer in Oregon, Washington, and Alaska.

(write in line \_\_\_\_\_)



### TREASURER

Bryon Free

Bryon has been active with AEG since 2012 where he started as a student member and moved into the chapter president role at Central Washington University. He has remained an active member in AEG in Washington and more recently in Oregon after moving to the Salem area 3 years ago. Bryon received his BS and MS from Central Washington University while quantifying the stream sedimentation and channel migration during the Elwha restoration project. Before coming to Oregon, Bryon was teaching at Central Washington University and Yakima Valley college where he taught several subjects within the earth sciences. Bryon's most recent position was working for the Oregon Department of Transportation as an Associate Geologist focusing on the Unstable Slopes Asset management program with the completion of his contract he is now a stay at home dad caring for his kids.

(write in line \_\_\_\_\_)

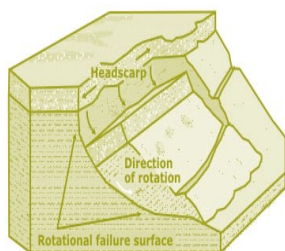


### SECRETARY

Ryan Cole

Ryan began his federal career right after high school in 2000 by enlisting in the United States Army. He volunteered for, and was selected to serve in the United States Army's Special Operations Command as a Ranger in the 1st Battalion, 75th Ranger Regiment. He completed four tours in Afghanistan and one tour in Iraq in support of Operations Enduring and Iraqi Freedom, respectively. In 2008 Ryan began working for the US Geological Survey while attending Portland State University, where he earned both a BS and MS in geology. His first permanent geologist position was with the US Forest Service in 2011, where he worked on a variety of National Forests across the western United States. His work with the US Forest Service included the mining, energy, abandoned mine reclamation, CERCLA, Burned Area Emergency Response, timber harvest access and suitability, and working on interdisciplinary teams for Forest road and facilities projects. He was most recently assigned to the Mt. Hood National Forest and Columbia River Gorge National Scenic Area as an engineering geologist. In 2020 he accepted a position at the Western Federal Lands Highway Division with the Federal Highway Administration in Vancouver, WA. He is a Registered Geologist in Oregon and will be sitting for the Certified Engineering Geologist exam in October.

(write in line \_\_\_\_\_)



*"The earth is large and  
old enough to teach us  
modesty."*

*Hans Cloos*



## Other Announcements:

- **Association of Environmental & Engineering Geologists 64<sup>th</sup> Annual Meeting**  
*"Rock-n the River"*  
**San Antonio, Texas**      **September 20-26, 2021**  
[www.aegannualmeeting.org](http://www.aegannualmeeting.org) - [Register Now](#)
- **The Geologic Society of America Annual Meeting**  
**"Connects 2021"**  
**Portland, Oregon** **October 10-13, 2021**  
[GSA Annual Meeting](#) - [Submit Abstract](#)

**Abstract submissions due July 20th, 2021**

### **Sessions that might be of interest:**

#### **T39. Engineering Geology for the Betterment of Society: Honoring the Legacy of Jerome V. De Graff.**

**Description:** This session is intended to honor the career and legacy of Jerome De Graff, who passed away in March 2020. We seek presentations from a variety of subjects in environmental and engineering geology.

#### **T42. Landslide Hazards: Inventories, Hazard Maps, Risk Analysis, and Warning Systems.**

**Description:** This session is designed to highlight landslide hazards information especially as related to landslide inventories, hazard maps, risk analysis, and warning systems

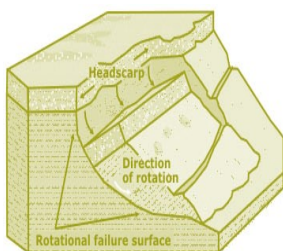
#### **T43. Modern Geoscience: Hazard and Risk Analysis and Communication.**

**Description:** The focus of this session is new techniques in hazards mapping and modeling, risk analysis, and risk communication

#### **T128. Biogeomorphic Responses to Wildfire in Fluvial Ecosystems**

**Description:** Conceptualizing rivers as ecosystems acknowledges interconnected and complex interactions among geomorphic, ecological, biogeochemical, and human processes. As wildfire becomes more prevalent, addressing the effects of erosion and sedimentation on ecology in fluvial systems will affect a variety of landscapes. Of particular relevance, as wildfires become more frequent and larger in our warming climate, there is a heightened risk to functional habitats in riparian and aquatic systems in rivers and floodplains. This session gathers interdisciplinary researchers addressing wildfire as it changes riparian and in-stream communities and physical habitats within fluvial ecosystems, including channels, hillslopes, and floodplains.

...and many more! Click the link above!





*"The earth is large and  
old enough to teach us  
modesty."*

*Hans Cloos*



[www.geobrugg.com/debris flow](http://www.geobrugg.com/debris flow)

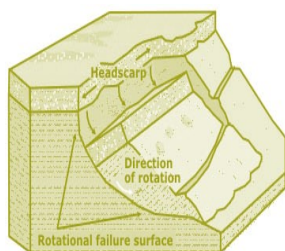
Free dimensioning tool  
[www.mygeobrugg.com](http://www.mygeobrugg.com)



### Post-Wildfire Debris Flow Protection

THE ECONOMICAL SOLUTION  
TO DEBRIS FLOW

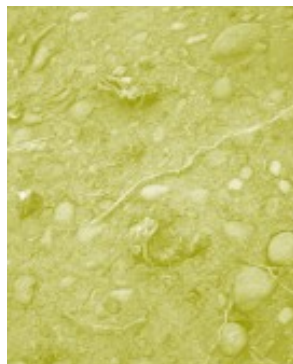
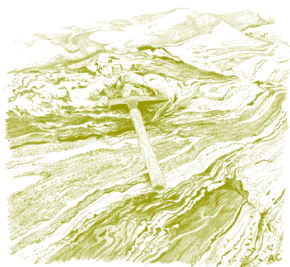
Geobrugg North America, LLC | 22 Centro Algodones | Algodones, NM 87001 USA |  
T +1 503 423 7258 | E-Mail [tim.shevlin@geobrugg.com](mailto:tim.shevlin@geobrugg.com) | [www.geobrugg.com](http://www.geobrugg.com)



**GEOPHYSICAL SURVEYING**  
for environmental  
and geotechnical  
applications

503.501.7846  
[nikos@pacificgeophysics.com](mailto:nikos@pacificgeophysics.com)  
[www.pacificgeophysics.com](http://www.pacificgeophysics.com)





## Your Environmental, Geotechnical, Clean Water Drilling Professionals

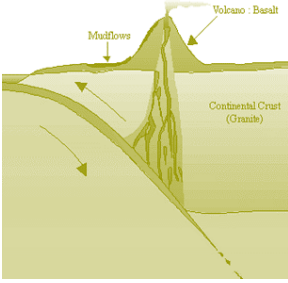
Work with experienced drillers who run your project with a friendly can-do attitude using state of the art drilling equipment, backed by an experienced management team with the authority to solve problems quickly.



# Call: (253) 693-3760

*Our Drilling Professionals are Ready to Help*





## We engineer success stories.

PBS is a trusted source of practical, sustainable solutions to the region's environmental and engineering challenges—enabling projects to succeed and communities to thrive.

**PBSUSA.COM**

Quality People  
Quality Results

37 years  
in the  
Northwest



ENVIRONMENTAL SERVICES • HEALTH & SAFETY  
SURVEY • GEOTECHNICAL ENGINEERING  
STRUCTURAL ENGINEERING • CIVIL ENGINEERING



### **EARTH DYNAMICS LLC**

2284 NW. Thurman St.  
Portland, OR 97210  
(503) 227-7659  
[info@earthdyn.com](mailto:info@earthdyn.com)

[www.earthdyn.com](http://www.earthdyn.com)

Providing Quality  
Geophysical Services  
since 1984

#### **Engineering Geophysics:**

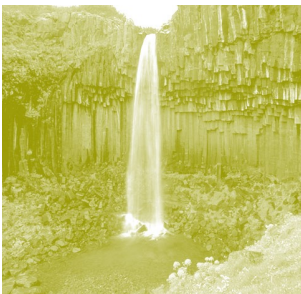
- Seismic Refraction/Reflection
- Shearwave Velocity Studies
- Electrical Resistivity Profiling
- Ground Penetrating Radar
- Magnetics/Electromagnetics
- Gravity
- Marine Geophysics

#### **Vibration & Noise Analysis:**

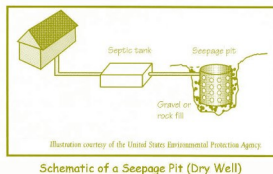
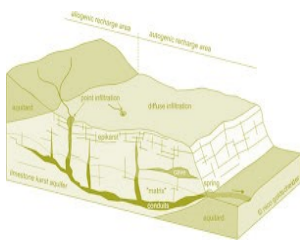
- Remote Vibration Monitoring
- Real-time Frequency Analysis
- Construction Monitoring
- Demolition Monitoring
- Blast Design and Monitoring
- Pre-construction Surveys
- Sensitive Equipment Certification

#### **Rock Mechanics:**

- Uniaxial Compressive Strength
- Direct and Triaxial Shear Strength
- Direct and Indirect Tensile Strength
- Dynamic & Static Elastic Moduli
- Thermal Properties
- Density & Porosity
- Moisture Content







**EARTH**

Geotechnical Engineering  
Environmental Remediation  
Water Resources  
Stormwater  
Data + Mapping

Bainbridge Island  
Bellingham  
Bend  
Portland  
Seattle  
Wenatchee  
Yakima

**Aspect**  
CONSULTING

[www.aspectconsulting.com](http://www.aspectconsulting.com)  
971.865.5890



## HI-TECH ROCKFALL CONSTRUCTION INC.

HI-TECH Rockfall is a General Contractor that specializes in Rockfall Mitigation and has been the industry leader for over 18 years. Our Highly Trained & Skilled Employees provide us the Highest Safety Record in the Industry.

We Service Multiple Industries which include:

Government & Military	Highways
Mines & Quarries	Railroads
Commercial & Residential	Utilities

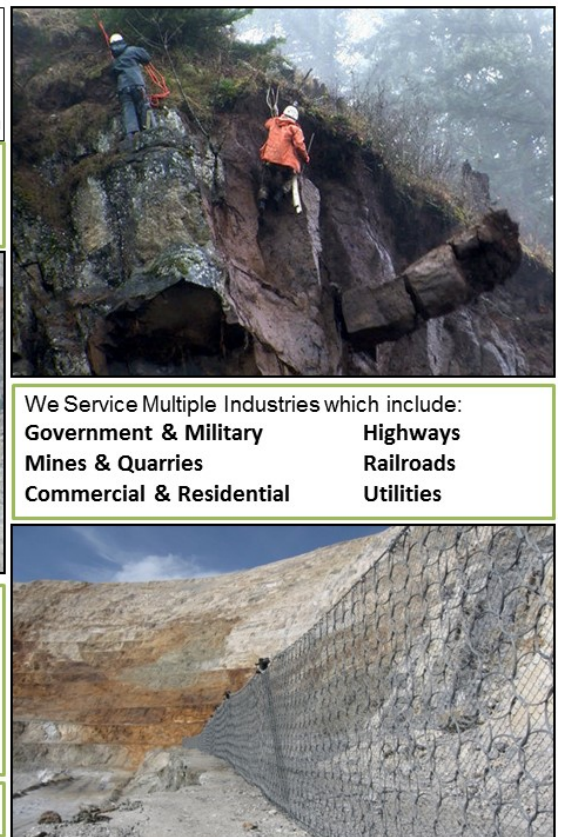
Products and Services include:

- Highwall Stabilization**
- Rock Scaling**
- Rock Dowels**
- Rockfall Barriers**
- Instrumentation Installation**

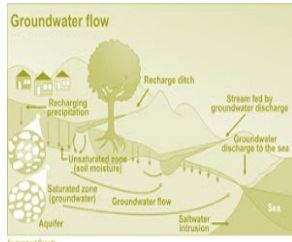
- Wire Mesh Drapery**
- Rock Bolts**
- Shotcrete**
- Avalanche Nets**
- Rope Access Work**

HI-TECH Rockfall Construction, Inc.  
P.O. Box 674, Forest Grove, OR 97116

Office: (503) 357-6508  
[www.hitechrockfall.com](http://www.hitechrockfall.com)







**SOIL and FOUNDATION  
STABILIZATION SOLUTIONS  
GEOTECHNICAL EXPLORATIONS**  
in OREGON and WASHINGTON  
503.649.8111 info@plisystems.com

- Drilled and Grouted Tie-Back Anchors
- Light Weight Fills: Foam & Cellular Concrete
- Geotechnical Drilling Explorations
- Shoring (temporary & permanent)
- Drainage, Including Horizontal
- Helical Anchors & Piles
- Drilled Shafts (caissons)
- Limited Access Drilling
- Landslide Stabilization

- Elevator Jack Shafts
- Displacement Piles
- Wall Construction
- Sheet Pile Walls
- Injection Boring
- Underpinning
- Rock Anchors
- Rock Coring
- Dewatering
- Pile Driving
- Micropiles
- Shotcrete
- Soil Nails
- Grouting
- Pin Piles
- SPT

*"A soil adapted to the growth of plants, is necessarily prepared and carefully preserved; and, in the necessary waste of land which is inhabited, the foundation is laid for future continents, in order to support the system of the living world.."*

*James Hutton*

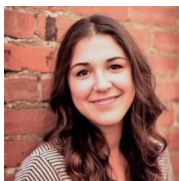




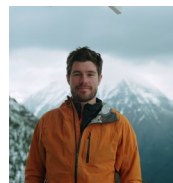
## Chapter Officers & Committee Chairs



Chair:  
Michael Marshall  
GRI  
[mmarshall@gri.com](mailto:mmarshall@gri.com)



Program Chair:  
Jasmin Jamal  
Aspect Consulting  
[jjamal@aspectconsulting.com](mailto:jjamal@aspectconsulting.com)



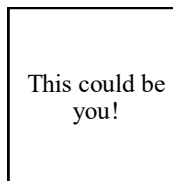
Legislature Chair:  
Sebastian Durringer  
Cornforth Consultants  
[SDurringer@CornforthConsultants.com](mailto:SDurringer@CornforthConsultants.com)



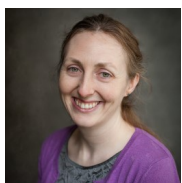
Chair –Elect:  
Nancy Calhoun  
DOGAMI  
[nancy.calhoun@oregon.gov](mailto:nancy.calhoun@oregon.gov)



Field-Trip Chair:  
Erin Dunbar  
Geosyntec Consultants, Inc.  
[dunbar.erin@gmail.com](mailto:dunbar.erin@gmail.com)



Newsletter Editor:  
Volunteer Needed  
This could be you!



Treasurer:  
Aine Mines,  
Comforth Consultants, Inc.  
[amines@comforthconsultants.com](mailto:amines@comforthconsultants.com)



Membership Chair:  
Ruth Wilmoth  
Columbia Geotechnical, Inc.  
[ruthwilmoth@comcast.net](mailto:ruthwilmoth@comcast.net)



Webpage Editor:  
Matt Randall  
[mattrandall3@gmail.com](mailto:mattrandall3@gmail.com)



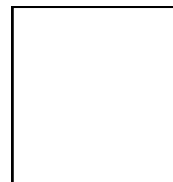
Secretary:  
Bryon Free  
[Bryonfree@gmail.com](mailto:Bryonfree@gmail.com)

**The Oregon Chapter is also on  
the web at**

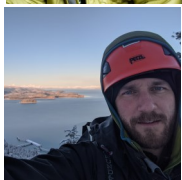
<http://www.aegoregon.org>

**National AEG webpage:**

<http://aegweb.org>



PSU Student Chapter President:  
TBD  
Portland State University



Past-Chair:  
Benjamin George  
Comforth Consultants, Inc.  
[bgeorge@ccilt.com](mailto:bgeorge@ccilt.com)

Subscribe to the newsletter by sending any e-mail to  
[aegoregon-subscribe@groups.electricembers.net](mailto:aegoregon-subscribe@groups.electricembers.net)

## Thanks For Supporting AEG

Members, Volunteers, Aspect Consulting, Columbia Geotechnical, Cornforth Consultants Inc., DOGAMI, Earth Dynamics LLC., Federal Energy Regulatory Commission (FERC), Geobruigg, GRI, Hi-Tech Rockfall, Holt Drilling, NACSE, ODOT, Oregon State University, Pacific Geophysics, PBS Engineering & Environmental, PLI Systems, Portland State University, Western Oregon University

## The AEG Oregon Chapter Newsletter

The Association of Engineering Geologists (AEG) contributes to its members' professional success and the public welfare by providing leadership, advocacy, and applied research in environmental and engineering geology. AEG's values are based on the belief that its members have a responsibility to assume stewardship over their fields of expertise. AEG is the acknowledged international leader in environmental and engineering geology, and is greatly respected for its stewardship of the profession.

AEG OREGON CHAPTER NEWSLETTER is published monthly from September through May. Subscriptions are for members of AEG affiliated with the Oregon Chapter or other Chapters, and other interested people who have requested and paid a local subscription fee of \$10.00. E-mail subscriptions are free. News items are invited and should be sent to: Ben George, AEG Oregon Chapter Chair-Elect, Cornforth Consultants, Inc., 10250 SW Greenburg Road, Suite 111, Portland, OR 97223, e-mail: [bgeorge@ccilt.com](mailto:bgeorge@ccilt.com), phone (503) 452-1100. Electronic media is preferred. Deadline for submittal is the 25th of the month. Advertising: business card size \$100/yr; ¼ page \$200/yr; ½ page \$350/yr; 1 page \$450/yr.

