

The Official

AEG OREGON CHAPTER NEWSLETTER

<http://www.aegoregon.org>

MEETING DETAILS

Date: Tuesday,
November 17, 2020

Location: Virtual
Link: Join Zoom Meeting
<https://us02web.zoom.us/j/85711440726?pwd=bUVMUzRZVmhmKQkFSSVUdUJERk5Zdz09>

Meeting ID: 857 1144 0726
Passcode: 767190

Evening Agenda:

6:00 pm Virtual Presentation

Deadline for registration:

November 16th, 2020

UPCOMING MEETINGS:

December: 15th: Dr. Marino

January 19th: TBD

February 16th: TBD

March 16th: TBD

April 20th: TBD

May 18th: TBD

June 15th: TBD

Preparing for Landslide Hazards: A Land Use Guide for Oregon Communities

Presented by: Tricia R. Sears & William (Bill) J. Burns

The Oregon Department of Land Conservation and Development (DLCD) and the Oregon Department of Geology and Mineral Industries (DOGAMI) published *Preparing for Landslide Hazards: A Land Use Guide for Oregon Communities* and its accompanying *Quick Reference* handout in October 2019. In response to community conversations throughout Oregon, DLCD and DOGAMI jointly pursued and obtained grant funding from the Federal Emergency Management Agency (FEMA). The *Land Use Guide* is the outcome, and responds to frequently asked community questions related to increasing local resilience to landslide hazards through land use options and strategies. Many of these questions come from communities with new DOGAMI lidar-based landslide maps. The *Land Use Guide* and *Quick Reference* can be downloaded from the DLCD and DOGAMI websites.

Bio: Tricia R. Sears

Tricia Sears has held her position as a Natural Hazards Planner with the Oregon Department of Land Conservation and Development (DLCD) since May 2016. Her primary responsibility is providing technical assistance to local and Tribal jurisdictions with natural hazards mitigation planning. More specifically, she manages projects to update to a community's Natural Hazards Mitigation Plan (NHMP). Having a current NHMP provides communities with eligibility for certain FEMA grant programs for pre- and post- disaster funds.



Tricia has a BA in Environmental Studies, a Masters in Environmental Management, and a post graduate certificate in the Assessment and Management of Geological Risks from the University of Geneva, Switzerland. Prior to coming to work for DLCD, she worked as an environmental planner and a project manager for two cities, a county, and a wetlands delineation firm. She was also the manager of a watershed council. Oregon Statewide Planning Goal 7: Areas subject to Natural Hazards is Tricia's favorite Statewide Planning Goal.



*"The earth is large and
old enough to teach us
modesty."*

Hans Cloos

Bio: William (Bill) J. Burns, MS, CEG

Bill attended Florida State University where he earned his bachelors degree in geology and then Portland State University for his master's degree in geology. While working on his masters, he was a research assistant on a study of landslides impacting the Portland METRO from the storms of 1996-97. His master's thesis was on the Engineering Geology and Relative Stability of an area in Oregon City, Oregon.



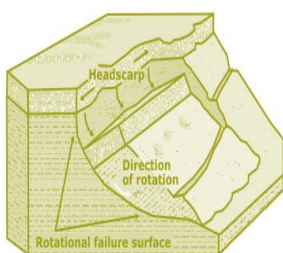
Bill is a registered Professional Geologist (PG) and Certified Engineering Geologist (CEG) in Oregon and Washington. He spent roughly 10 years consulting as an engineering geologist in Oregon and Washington before his current position as Landslide Geotechnical Specialist at the Oregon Department of Geology and Mineral Industries (DOGAMI). He has spent the last 15 years at DOGAMI working on research related to earthquake, landslide, and volcanic hazards in Oregon. He is the principal investigator at DOGAMI on landslide hazards and has authored many publications on landslide hazard mapping methodology, risk analysis, and maps. He has spent the last 25 years helping communities in Oregon understand and reduce risk from earthquake, volcano, and landslide hazards.

Bill is also an active member of the Association of Engineering Geologists (AEG) and the Geological Society of America (GSA). He is also married to Amy Burns and father of two teenagers, Ned and Isabelle.

Message from the Chair

We had a great meeting last month and Hans and Andrew from Atlas Technical discussed a number of interesting case histories using geophysical methods. Thank you to everyone that could attend. This month we have a great talk lined up to present Oregon's new guide *Preparing for Landslide Hazards: A Land Use Guide for Oregon Communities* developed by Tricia Sears (Oregon Dept of Land Conservation and Development) and Bill Burns (Oregon Department of Geology and Mineral Industries (DOGMAI)). The guide talks about how landowners can reduce the potential losses from landslide events. we identify land use tools and strategies. The Guide is focused on land use planning approaches to reduce landslide hazard risk. Be sure to register for the zoom link for the meeting on November 17th.

In case you missed the October meeting, Erika Koss an OSBGE board member, mentioned that Senate Bills (SB) 43 and 44 bills have now been passed by the Oregon Legislature and signed by Governor Brown and are effective 1/1/2020. OSBGE will need to pursue rulemaking in 2020 to implement changes authorized by SB 43 and 44. The rules allow OSBGE to develop a continuing education program as part of geologist registration. Erika indicated that professional development hours can be earned this year and applied to when the Continued ...



*"The earth is large and
old enough to teach us
modesty."*

Hans Cloos

Chair Message Continued . . .

law goes into effect. We are developing an electronic PDH certificate for our meetings this year. Stay tuned for those certificates if you have attended a virtual meeting and be sure to attend some of the meetings we have planned this year and build up your PDHs for geologist registration.

I want to thank all the wonderful volunteers that spend time helping run this organization and bring to our group the presentations, community information, and student support. There would be no Oregon Chapter without Ben George, Nancy Calhoun, Aine Mines, Bryon Free, Jasmin Toro, Ruth Wilmoth, and Matt Randal. Thank you: Aspect Consulting, Geobruigg, Pacific Geophysics, Holt Services, Earth Dynamics LLC., Hi-Tech Rockfall, PBS Engineering & Environmental, and PLI Systems for supporting the Oregon Chapter. Thank you so very much for your time, support, guidance, and involvement with our community. I look forward to working with all of you in the coming months. It is important that we continue to volunteer to participate in our community, attend meetings, and be involved. Please contact anyone on the board, our emails are provided below, to inquire about volunteering an hour or two a month for the Oregon Chapter. We could not do it without you.

Be well,

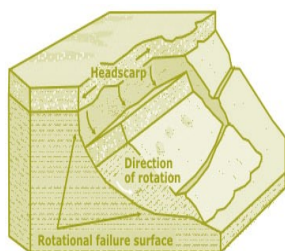
Mike

Interested in presenting for the Oregon Chapter?

The Oregon Chapter is looking for great topics and presenters to provide content to share with the chapter. As we continue to navigate the virtual world, we will be holding the next foreseeable meetings through webinars. We currently have opportunities to present in November and December. Please consider presenting your exciting project to the Oregon Chapter. We look forward to hearing from all of you and especially appreciative of those willing to present to the Chapter. If you are interested in presenting please feel free to contact any board member. Our contact information is at the end of the newsletter.

Geology Quiz:

Q: What geologic unit in Oregon was once a semitropical island?



*"The earth is large and
old enough to teach us
modesty."*

Hans Cloos



www.geobrugg.com/debris_flow

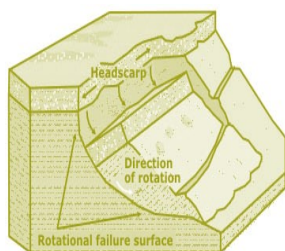
Free dimensioning tool
www.mygeobrugg.com



Post-Wildfire Debris Flow Protection

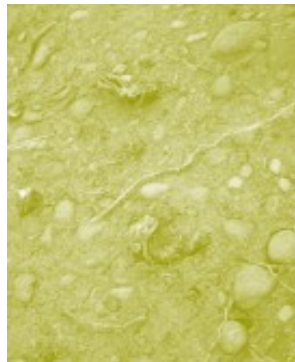
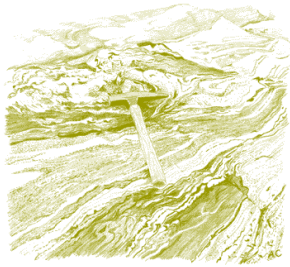
THE ECONOMICAL SOLUTION
TO DEBRIS FLOW

Geobrugg North America, LLC | 22 Centro Algodones | Algodones, NM 87001 USA |
T +1 503 423 7258 | E-Mail tim.shevlin@geobrugg.com | www.geobrugg.com



GEOPHYSICAL SURVEYING
for environmental
and geotechnical
applications

503.501.7846
nikos@pacificgeophysics.com
www.pacificgeophysics.com



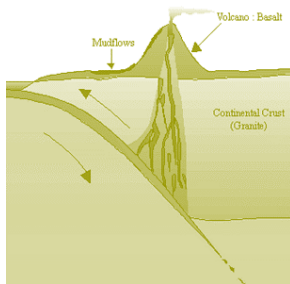
Your Environmental, Geotechnical, Clean Water Drilling Professionals

Work with experienced drillers who run your project with a friendly can-do attitude using state of the art drilling equipment, backed by an experienced management team with the authority to solve problems quickly.



Call: (253) 693-3760

Our Drilling Professionals are Ready to Help



We engineer success stories.

PBS is a trusted source of practical, sustainable solutions to the region's environmental and engineering challenges—enabling projects to succeed and communities to thrive.

PBSUSA.COM

Quality People
Quality Results

37 years
in the
Northwest



ENVIRONMENTAL SERVICES • HEALTH & SAFETY
SURVEY • GEOTECHNICAL ENGINEERING
STRUCTURAL ENGINEERING • CIVIL ENGINEERING



EARTH DYNAMICS LLC

2284 NW. Thurman St.
Portland, OR 97210
(503) 227-7659
info@earthdyn.com

www.earthdyn.com

Providing Quality
Geophysical Services
since 1984

Engineering Geophysics:

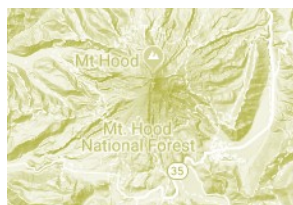
- Seismic Refraction/Reflection
- Shearwave Velocity Studies
- Electrical Resistivity Profiling
- Ground Penetrating Radar
- Magnetics/Electromagnetics
- Gravity
- Marine Geophysics

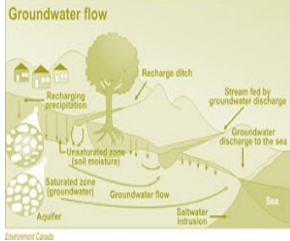
Vibration & Noise Analysis:

- Remote Vibration Monitoring
- Real-time Frequency Analysis
- Construction Monitoring
- Demolition Monitoring
- Blast Design and Monitoring
- Pre-construction Surveys
- Sensitive Equipment Certification

Rock Mechanics:

- Uniaxial Compressive Strength
- Direct and Triaxial Shear Strength
- Direct and Indirect Tensile Strength
- Dynamic & Static Elastic Moduli
- Thermal Properties
- Density & Porosity
- Moisture Content





**SOIL and FOUNDATION
STABILIZATION SOLUTIONS
GEOTECHNICAL EXPLORATIONS**
in OREGON and WASHINGTON
503.649.8111 info@plisystems.com

- Drilled and Grouted Tie-Back Anchors
- Light Weight Fills: Foam & Cellular Concrete
- Geotechnical Drilling Explorations
- Shoring (temporary & permanent)
- Drainage, Including Horizontal
- Helical Anchors & Piles
- Drilled Shafts (caissons)
- Limited Access Drilling
- Landslide Stabilization

- Elevator Jack Shafts
- Displacement Piles
- Wall Construction
- Sheet Pile Walls
- Injection Boring
- Underpinning
- Rock Anchors
- Rock Coring
- Dewatering
- Pile Driving
- Micropiles
- Shotcrete
- Soil Nails
- Grouting
- Pin Piles
- SPT

"A soil adapted to the growth of plants, is necessarily prepared and carefully preserved; and, in the necessary waste of land which is inhabited, the foundation is laid for future continents, in order to support the system of the living world.."

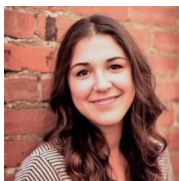
James Hutton



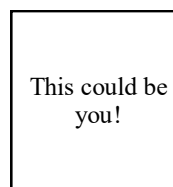
Chapter Officers & Committee Chairs



Chair:
Michael Marshall
GRI
mmarshall@gri.com



Program Chair:
Jasmin Jamal
Aspect Consulting
jjamal@aspectconsulting.com



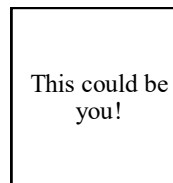
Legislature Chair:
Volunteer Needed
This could be you!



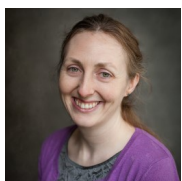
Chair –Elect:
Nancy Calhoun
DOGAMI
nancy.calhoun@oregon.gov



Field-Trip Chair:
Erin Dunbar
Geosyntec Consultants, Inc.
dunbar.erin@gmail.com



Newsletter Editor:
Volunteer Needed
This could be you!



Treasurer:
Aine Mines,
Comforth Consultants, Inc.
amines@comforthconsultants.com



Membership Chair:
Ruth Wilmoth
Columbia Geotechnical, Inc.
ruthwilmoth@comcast.net



Webpage Editor:
Matt Randall
mattrandall3@gmail.com



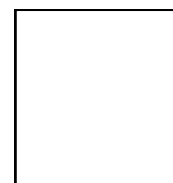
Secretary:
Bryon Free
Oregon Department of Transportation
Bryonfree@gmail.com

**The Oregon Chapter is also on
the web at**

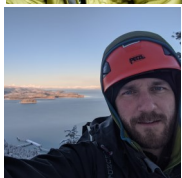
<http://www.aegoregon.org>

National AEG webpage:

<http://aegweb.org>



PSU Student Chapter President:
TBD
Portland State University



Past-Chair:
Benjamin George
Comforth Consultants, Inc.
bgeorge@ccilt.com

Subscribe to the newsletter by sending any e-mail to
aegoregon-subscribe@groups.electricembers.net

Thanks For Supporting AEG

Members, Volunteers, Aspect Consulting, Columbia Geotechnical, Cornforth Consultants Inc., DOGAMI, Earth Dynamics LLC., Federal Energy Regulatory Commission (FERC), Geobruigg, GRI, Hi-Tech Rockfall, Holt Drilling, NACSE, ODOT, Oregon State University, Pacific Geophysics, PBS Engineering & Environmental, PLI Systems, Portland State University, Western Oregon University

The AEG Oregon Chapter Newsletter

The Association of Engineering Geologists (AEG) contributes to its members' professional success and the public welfare by providing leadership, advocacy, and applied research in environmental and engineering geology. AEG's values are based on the belief that its members have a responsibility to assume stewardship over their fields of expertise. AEG is the acknowledged international leader in environmental and engineering geology, and is greatly respected for its stewardship of the profession.

AEG OREGON CHAPTER NEWSLETTER is published monthly from September through May. Subscriptions are for members of AEG affiliated with the Oregon Chapter or other Chapters, and other interested people who have requested and paid a local subscription fee of \$10.00. E-mail subscriptions are free. News items are invited and should be sent to: Ben George, AEG Oregon Chapter Chair-Elect, Cornforth Consultants, Inc., 10250 SW Greenburg Road, Suite 111, Portland, OR 97223, e-mail: bgeorge@ccilt.com, phone (503) 452-1100. Electronic media is preferred. Deadline for submittal is the 25th of the month. Advertising: business card size \$100/yr; ¼ page \$200/yr; ½ page \$350/yr; 1 page \$450/yr.

