

The Official

AEG OREGON CHAPTER NEWSLETTER

<http://www.aegoregon.org>

MEETING DETAILS

!!Webcast!!

Date: Tuesday,
May 19, 2020

In order keep the meeting private to our AEG members you must pre register for the meeting. Please click the link below to register

[AEGPortlandMay2020](https://attendee.gotowebinar.com/register/2427330654611370765)

(<https://attendee.gotowebinar.com/register/2427330654611370765>)

(By registering, the webinar organizer, will use your RSVP/Registration to communicate the meeting link and password to you via email.

Evening Agenda:

6:00 pm Presentation

Deadline:

May 18th, 2020 by Noon

UPCOMING MEETINGS:

STUDENT NIGHT!

June 16th 2020

See the announcement
on page 3!



In Situ Stabilization for Development

Speaker: Rory Kilkenny

Many urban redevelopment sites require both environmental remediation as well as geotechnical ground improvement. Under the correct site conditions, significant cost efficiencies can be gained by coupling the environmental and geotechnical efforts with a single technology called in-situ solidification (ISS).

ISS involves mechanically mixing environmentally impacted soil with cement-based binders without removing the soil from the ground. The goal is to encapsulate contaminated material and form a solid monolith. This monolith is designed to restrict contaminant migration by decreasing the surface area exposed to leaching and by lowering the hydraulic conductivity of the material. ISS has the added benefit of improving the geotechnical properties of the soil, including increasing soil strength and reducing susceptibility to liquefaction or settlement.

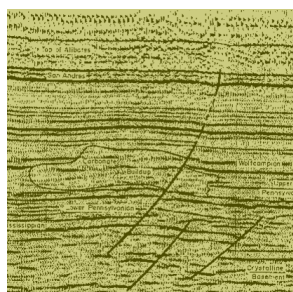
In his presentation, Rory will discuss the state-of-the-art ISS as a remedial and geotechnical ground improvement technology.



Biography:



Rory Kilkenny is a professional engineer with 10 years of experience working on waterfront and upland projects related to geo-environmental investigation, design and project implementation. He has designed and implemented environmental remedies throughout the North America and western Europe. He specializes in projects with a focus on deep excavations requiring shoring and dewatering, in-situ solidification/stabilization, permeable reactive barriers, and hydraulic cut-off walls. His in-situ solidification/stabilization projects have included the remediation of manufactured gas plants, creosote sites, chlorinated solvent plumes, and refineries. While not at work he enjoys spending time outdoors with his wife Sara.



Message from the Chair

To paraphrase a certain masked crime fighter: With great change comes great opportunity! This month brings an exciting new event for our Chapter. We have organized a first-ever (for us) Webinar Meeting to hear a talk from Rory Kilkenny of Aspect Consulting. Rory will be discussing in-situ solidification (ISS). Based on feedback from the Nisqually Chapter's recent virtual meeting, this format will help us all stay healthy and allow new folks from outside the Portland Metro region to join! Please join us on May 19th for a great talk and remember to bring your own beverage.

Another exciting event we are planning is a Virtual Student Night in June. We are soliciting any and all students who are interested in presenting their research for the Chapter for cash prize money and an opportunity to interact with local professionals. To participate, each student will be required to prepare a 2 to 5 minute recorded video presentation to be shared via YouTube. Because the presentations will be submitted in advance, this year we're able to offer a twist on our regular Student Night: All AEG members who watch the video presentations will be able to cast votes! So, students, if you like money and want to rub elbows with potential employers please see the Student Night announcement in this newsletter and on our website.

Thanks for being a part of the AEG organization!

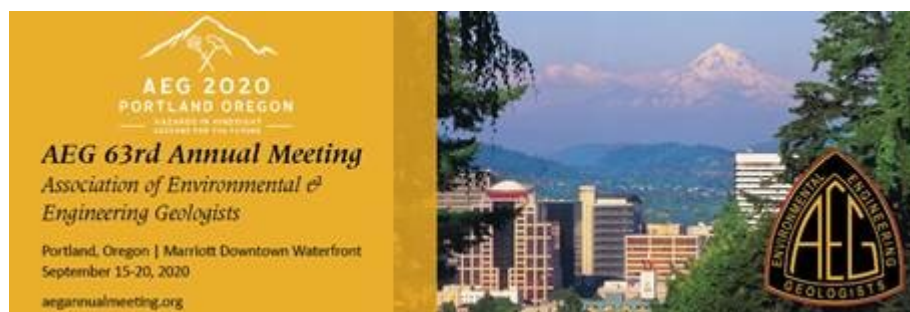
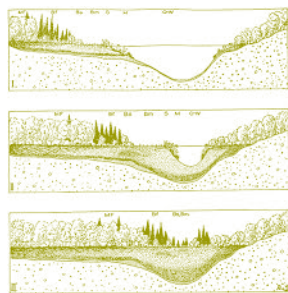
Ben George
Oregon AEG Chapter Chair

AEG 2020 Annual Meeting

Please stay tuned for updates later this month from AEG National regarding September Portland Annual Meeting. We'll keep you informed as we learn more in this time of uncertainty.

*"Keen observation is at
least as necessary as
penetrating analysis"*

Karl Terzaghi



AEG Oregon

Student Night 2020

This year the student night will be held on

Tuesday June 16, 2020 on the Worldwide Webs

Submittal Requirements:

Students working towards a Bachelors, Masters, or PhD degree generally focused in geology and earth science studies. Each participant is required to provide a 2 to 5 minute recorded YouTube video presentation. More details with format will be forthcoming.

Please email interest in participation ASAP. Please provide an email address along with degree being sought, school attending, year in school, and favorite food. Attendance at the June 16th meeting is required to answer questions from the board and chapter.

Subject Matter:

We would like to hear about subjects related to geology and earth sciences across a myriad of topics including: environmental, engineering, soils, rocks, field mapping, GIS, UAV remote sensing, technology, chemistry, etc. The project area does not have to be in Oregon. Senior projects, Master's thesis or PhD dissertations are all acceptable, including work in progress.

Submission:

Submit your presentation to the Oregon AEG Board at bgeorge@CornforthConsultants.com.

Please email ASAP with interest. Submissions provided by June 9, 2020 will be considered for awards, so get cranking to win one of many prizes.

Prizes:

There are multiple prizes awaiting you and your project, including:

Most Relevant to Engineering

Geology Practice - \$200

Best Undergraduate - \$250

Most Creative Presentation - \$150

Most Relevant to Environmental

Geology Practice - \$200

Best Graduate - \$250

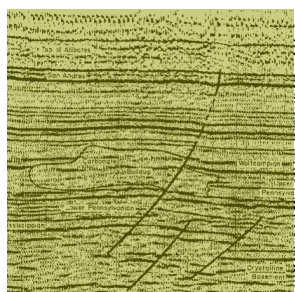
Best Quality Presentation - \$150

Best Overall Presentation - \$350

Each accepted submittal will receive a \$25 gift card to REI

****one gift card per person if multiple submittals are provided***

***** one prize per person if multiple submittals are provided***



Memoriam – Jerome (Jerry) Vernon DeGraff

Our colleague, dear friend, and fellow engineering geologist, Jerome (Jerry) V. DeGraff, Adjunct Professor of Geology, Fresno State University, California, passed away the night of March 26, after fighting pancreatic cancer for nearly three years. Before joining Fresno State University as an Adjunct Professor, Jerry had a long and distinguished career (1977-2014) with the United States Department of Agriculture (USDA) – Forest Service. His work with the Forest Service focused on landslide hazards as related to forest fires, risk assessment, mitigation, and landslide-related policy issues.



Jerry's contributions to our profession are too numerous to mention. He published some 100 technical articles in peer reviewed journals, proceedings volumes, and book chapters. He co-authored several books, most notably "Principles of Engineering Geology" in 1988 and, in 2002, "Catastrophic Landslides: Effects, Occurrences and Mechanisms," co-edited several proceedings volumes, including the proceedings of the 3rd North American Landslide Symposium, and served as a member of the Editorial Advisory Board of the Encyclopedia of Engineering Geology. Jerry provided extensive consulting service on landslides in the United States as well as Jamaica, Dominica, St. Lucia, Puerto Rico, and elsewhere in Latin America.

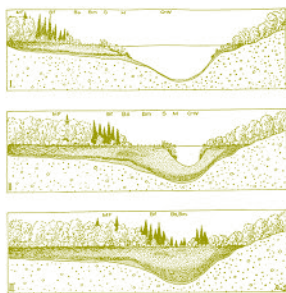
Jerry was a very active member of Geological Society of America (GSA), Environmental & Engineering Geology Division (EEGD) of GSA, Association of Environmental & Engineering Geologists (AEG), and International Association for Engineering Geology and the Environment (IAEG). He graciously and effectively performed extensive committee work for all of these professional societies. He was the past EEGD chair, a Jahns Lecturer, Burwell awardee (EEGD), Claire P. Holdredge Awardee (AEG), Frye committee member, GSA Councilor, Distinguished Practice awardee (EEGD), Meritorious Service awardee (EEGD), Environmental & Engineering Geoscience journal (EEG) Best Publication awardee, and Chair of the EEG Advisory Board.

Jerry's long and distinguished record of accomplishments, commitment to detail and scientific practice, mentorship and high professional and ethical standards touched the global community directly and indirectly. His work influenced individuals around the world - his collaboration helped numerous colleagues and the results of his landslide-focused accomplishments will benefit society for years to come. Jerry will be especially remembered for his endless enthusiasm, unbridled kindness, open generosity, humanity, devoted friendship, which he shared with a caring and positive attitude, patience, laughter, smiles, and good humor — these special traits will stay with us forever.

Jerry is survived by his loving wife and devoted companion, Sandy, as well as two sons, Mark and Nick, and grandson Liam.

“Keen observation is at least as necessary as penetrating analysis”

Karl Terzaghi



*"The earth is large and
old enough to teach us
modesty."*

Hans Cloos

TECCO® SYSTEM³ – Your slopes made stable

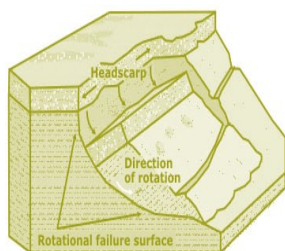
- TECCO® SYSTEM³ can be optimized depending on the subsoil with several mesh types
- meshes made of 2 mm, 3 mm and 4 mm diameter high-tensile steel wire
- optimization of anchor spacing thanks to two new spike plate sizes
- RUVOLUM® dimensioning software based on large-scale field and model tests
- small CO₂ footprint and option to cover with natural vegetation



Scan and watch our movie on
[www.geobrugg.com/youtube/](http://www.geobrugg.com/youtube/TECCO-fullscale)
TECCO-fullscale



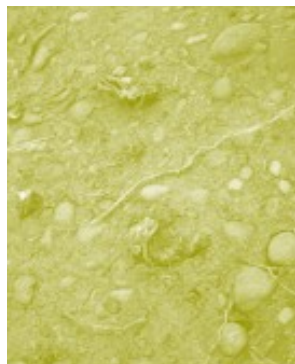
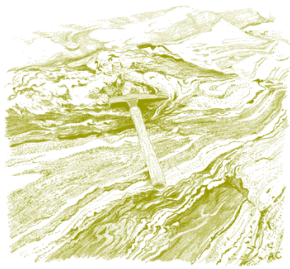
Geobrugg North America, LLC
Tim Shevlin, PG • Northwestern USA
Phone (503) 423-7258 • Fax (505) 771-4081
tim.shevlin@geobrugg.com
www.geobrugg.com



GEOPHYSICAL SURVEYING
for environmental
and geotechnical
applications



503.501.7846
nikos@pacificgeophysics.com
www.pacificgeophysics.com

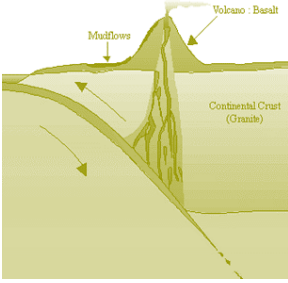


**Your Environmental,
Geotechnical
& Clean Water
Professionals**

360-771-7586

info@holtservicesinc.com

www.holtservicesinc.com



We engineer success stories.

PBS is a trusted source of practical, sustainable solutions to the region's environmental and engineering challenges—enabling projects to succeed and communities to thrive.

PBSUSA.COM

Quality People
Quality Results

37 years
in the
Northwest



ENVIRONMENTAL SERVICES • HEALTH & SAFETY
SURVEY • GEOTECHNICAL ENGINEERING
STRUCTURAL ENGINEERING • CIVIL ENGINEERING



EARTH DYNAMICS LLC

2284 NW. Thurman St.
Portland, OR 97210
(503) 227-7659
info@earthdyn.com

www.earthdyn.com

Providing Quality
Geophysical Services
since 1984

Engineering Geophysics:

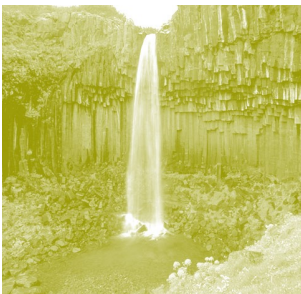
- Seismic Refraction/Reflection
- Shearwave Velocity Studies
- Electrical Resistivity Profiling
- Ground Penetrating Radar
- Magnetics/Electromagnetics
- Gravity
- Marine Geophysics

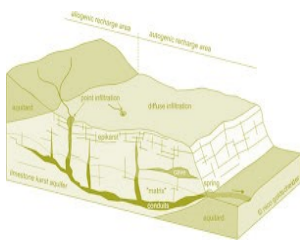
Vibration & Noise Analysis:

- Remote Vibration Monitoring
- Real-time Frequency Analysis
- Construction Monitoring
- Demolition Monitoring
- Blast Design and Monitoring
- Pre-construction Surveys
- Sensitive Equipment Certification

Rock Mechanics:

- Uniaxial Compressive Strength
- Direct and Triaxial Shear Strength
- Direct and Indirect Tensile Strength
- Dynamic & Static Elastic Moduli
- Thermal Properties
- Density & Porosity
- Moisture Content





EARTH

Geotechnical Engineering
Environmental Remediation
Water Resources
Stormwater
Data + Mapping

Bainbridge Island
Bellingham
Bend
Portland
Seattle
Wenatchee
Yakima

Aspect
CONSULTING

www.aspectconsulting.com
971.865.5890



HI-TECH Rockfall is a General Contractor that specializes in Rockfall Mitigation and has been the industry leader for over 18 years. Our Highly Trained & Skilled Employees provide us the Highest Safety Record in the Industry.



Products and Services include:

Highwall Stabilization

Rock Scaling

Rock Dowels

Rockfall Barriers

Instrumentation Installation

Wire Mesh Drapery

Rock Bolts

Shotcrete

Avalanche Nets

Rope Access Work

HI-TECH Rockfall Construction, Inc.
P.O. Box 674, Forest Grove, OR 97116

Office: (503) 357-6508
www.hitechrockfall.com



We Service Multiple Industries which include:

Government & Military

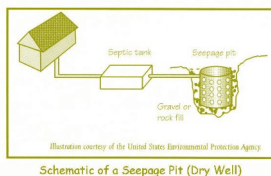
Mines & Quarries

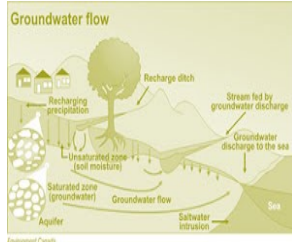
Commercial & Residential

Highways

Railroads

Utilities





**SOIL and FOUNDATION
STABILIZATION SOLUTIONS
GEOTECHNICAL EXPLORATIONS**
in OREGON and WASHINGTON
503.649.8111 info@plisystems.com

- Drilled and Grouted Tie-Back Anchors
- Light Weight Fills: Foam & Cellular Concrete
- Geotechnical Drilling Explorations
- Shoring (temporary & permanent)
- Drainage, Including Horizontal
- Helical Anchors & Piles
- Drilled Shafts (caissons)
- Limited Access Drilling
- Landslide Stabilization

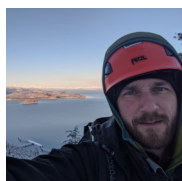
- Elevator Jack Shafts
- Displacement Piles
- Wall Construction
- Sheet Pile Walls
- Injection Boring
- Underpinning
- Rock Anchors
- Rock Coring
- Dewatering
- Pile Driving
- Micropiles
- Shotcrete
- Soil Nails
- Grouting
- Pin Piles
- SPT

"A soil adapted to the growth of plants, is necessarily prepared and carefully preserved; and, in the necessary waste of land which is inhabited, the foundation is laid for future continents, in order to support the system of the living world.."

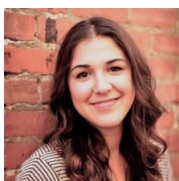
James Hutton



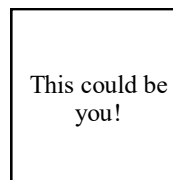
Chapter Officers & Committee Chairs



Chair:
Benjamin George
Comforth Consultants, Inc.
bgeorge@ccilt.com



Program Chair:
Jasmin Jamal
Aspect Consulting
jjamal@aspectconsulting.com



Legislature Chair:
Volunteer Needed
This could be you!



Chair-Elect:
Michael Marshall
GRI
mmmarshall@gri.com



Field-Trip Chair:
Erin Dunbar
Geosyntec Consultants, Inc.
dunbar.erin@gmail.com



Newsletter Editor:
Bryon Free
Oregon Department of Transportation
Bryonfree@gmail.com



Treasurer:
Nancy Calhoun
DOGAMI
nancy.calhoun@oregon.gov



Membership Chair:
Ruth Wilmoth
Columbia Geotechnical, Inc.
ruthwilmoth@comcast.net



Webpage Editor:
Matt Randall
PBS Engineering and Environmental
matt.randall@pbsusa.com



Secretary:
Aine Mines,
Comforth Consultants, Inc.
amines@comforthconsultants.com

**The Oregon Chapter is also on
the web at**

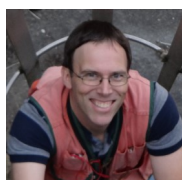
<http://www.aegoregon.org>

National AEG webpage:

<http://aegweb.org>



PSU Student Chapter President:
Stephanie Welch
Portland State University
sw22@pdx.edu



Past-Chair:
Chris Humphrey
FERC
geohumphrey@yahoo.com

Subscribe to the newsletter by sending any e-mail to
aegoregon-subscribe@groups.electricmembers.net

Thanks For Supporting AEG

Members, Volunteers, Aspect Consulting, Columbia Geotechnical, Cornforth Consultants Inc., DOGAMI, Earth Dynamics LLC., Federal Energy Regulatory Commission (FERC), Geobruigg, GRI, Hi-Tech Rockfall, Holt Drilling, NACSE, ODOT, Oregon State University, Pacific Geophysics, PBS Engineering & Environmental, PLI Systems, Portland State University, Western Oregon University

The AEG Oregon Chapter Newsletter

The Association of Engineering Geologists (AEG) contributes to its members' professional success and the public welfare by providing leadership, advocacy, and applied research in environmental and engineering geology. AEG's values are based on the belief that its members have a responsibility to assume stewardship over their fields of expertise. AEG is the acknowledged international leader in environmental and engineering geology, and is greatly respected for its stewardship of the profession.

AEG OREGON CHAPTER NEWSLETTER is published monthly from September through May. Subscriptions are for members of AEG affiliated with the Oregon Chapter or other Chapters, and other interested people who have requested and paid a local subscription fee of \$10.00. E-mail subscriptions are free. News items are invited and should be sent to: Ben George, AEG Oregon Chapter Chair-Elect, Cornforth Consultants, Inc., 10250 SW Greenburg Road, Suite 111, Portland, OR 97223, e-mail: bgeorge@ccilt.com, phone (503) 452-1100. Electronic media is preferred. Deadline for submittal is the 25th of the month. Advertising: business card size \$100/yr; ¼ page \$200/yr; ½ page \$350/yr; 1 page \$450/yr.

