

The Official

AEG OREGON CHAPTER NEWSLETTER

<http://www.aegoregon.org>

MEETING DETAILS

Date: Tuesday, Dec 17, 2019

Location: Old Market Pub
6959 SW Multnomah Blvd
Portland, OR 97223

Evening Agenda:

6:00 pm Social Hour

6:45 pm Dinner

7:30 pm Presentation

Reservations:

aeg-or-2019-12.brownpapertickets.com

\$25 Private Industry

\$20 Public Agencies

Free for Students

Deadline:

12 noon Monday, Dec 17, 2019

UPCOMING MEETINGS:

Jan 21st Joint ASCE (TBD)

Feb 18th Tim Shevlin (GeoBrugg)

Mar 17th Jahn's Lecturer

Apr 21st TBD

(Share your knowledge)

May 19th Student Poster Night

RCRA Requirements for Hazardous Waste Land-based Units

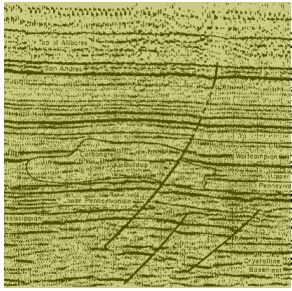
Speaker: Cynthia Palomares, P.G., P.E., AEG President

The Resource Conservation and Recovery Act (RCRA) was passed by Congress in 1976 to regulate hazardous waste from its development to its disposal. RCRA requires that all hazardous waste disposed of in land-based units must meet certain criteria to ensure protection of human health and the environment. Land-based units that manage hazardous waste may include landfills, surface impoundments, waste piles, and land-treatment units. Requirements for land-based units include criteria for siting, design, operation, and closure. In addition, hazardous waste must be treated to meet certain standards before disposal in land-based units. As discussed in this case study, proper siting, design, and operating standards for a hazardous waste landfill in Texas will help ensure protection of human health and the environment.

Bio: Cynthia D. Palomares P.G., P.E., AEG President

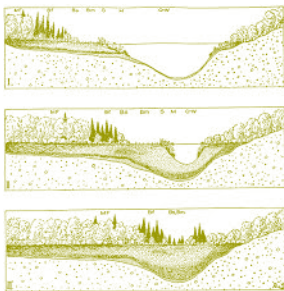
Cynthia D. Palomares is currently an Adjunct Instructor for the Texas A&M University, Texas Engineering Extension Service in College Station. As an adjunct instructor, Ms. Palomares conducts training courses for environmental professionals for certification of Hazardous Waste Operations and Emergency Response. Prior to her work as an adjunct Instructor, Ms. Palomares was a Project Manager for the Texas Commission on Environmental Quality in Austin from 1993 until her retirement in 2016. As a project manager in the Industrial & Hazardous Waste Permits Section, Ms. Palomares reviewed and evaluated hazardous waste permit applications for both regulatory and technical completeness to ensure compliance with applicable hazardous waste, radioactive waste, and Texas Risk Reduction Program rules and regulations. Prior to her position as a project manager in the I&HW Permits Section, Ms. Palomares conducted technical reviews and processed applications for underground injection control (UIC) and in-situ leachate uranium mining facilities in the UIC/Radioactive Waste Section of the TCEQ. Prior to employment with the TCEQ, Ms. Palomares was employed as a staff scientist for Westinghouse Hanford Company in Richland, Washington for three years. (Continued...)





“Keen observation is at least as necessary as penetrating analysis”

Karl Terzaghi



Cynthia D. Palomares P.G., P.E., AEG President Bio: Continued...

Ms. Palomares earned both a Bachelor of Science and Master of Science in Engineering Geology from Texas A&M University in College Station, TX. She is both a Licensed Professional Geologist and Licensed Professional Engineer in Texas.

Ms. Palomares joined AEG in 1986 as a student member of the Lone Star student chapter at Texas A&M University. In 1990, she was awarded the “Best Student Presentation Award” at the Texas Section Spring Meeting. In 2011, she was awarded the “Floyd T. Johnston Outstanding Engineering Geologist Award” at the Texas Section Fall Meeting. Service to AEG includes the following positions: Lone Star Student Chapter Officer (1986-1990), Washington Section Field Trip Coordinator (1991-1993), Texas Section Treasurer (2001-2003), Texas Section Vice-Chair (2004-2006), Texas Section Chair (2007-2009), Texas Section Past Chair (2010-2012), 2010 Shlemon Specialty Conference Chair on “Gulf Coast Subsidence and Sea-level Rise”, Governance Committee member (2010-2012), Section/Chapter Support Committee Chair (2012-2016), AEG Strategic Planning Committee Co-Chair (2014 - 2016), AEG Secretary (2016-2017), AEG Treasurer (2017-2018), AEG Vice-President (2018-2019) and President (2019-2020).

Message from the Chair

On behalf of the Oregon Chapter Board we wish you all a happy holiday season. We hope your Thanksgiving was a festive family and friend filled event.

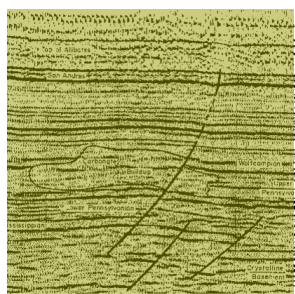
Thanks to those that were able to attend the November meeting to hear Collin McCormick discuss his landslide project in northern Idaho. Thanks to Collin for stepping in to fill the missing speaker position. Special thanks to Western States Drilling for the last minute sponsoring of the refreshments.

This month we have the AEG National president, Cynthia Palomares for our presenter. She will be updating the Chapter on National news as well as presenting on Resource Conservation and Recovery Act (RCRA) requirements. Please join us on December 17th and show our support for AEG.

The end of the year is a busy time. If you have a free moment, please renew your membership for 2020. Our memberships help support the Chapter and keep the national organization vibrant. As always your support of the Chapter and AEG is appreciated.

Thank you for being the most important part of AEG.

Ben George
Oregon AEG Chapter Chair



AEG Membership update

A friendly reminder that AEG membership renewal time is upon us. Please renew for the 2020 season. Included with the membership is a 20% discount on all special publications, registration fees at meetings, short courses, and field trips. This has a particular benefit this coming season with the 2020 National AEG meeting in Portland this next season. Sounds like a good time to have your membership fully up and running. A special note to Students and Post Graduates. Student membership is free and Post Graduate Student members get the benefit of a discounted membership for their first year out of school.

Geology Quiz

Did you know that the Blue Mountains province located in North Eastern Oregon was created by the collision of several “exotic terranes”. Several granitic intrusions appear to hold these terranes together. Do you know what they are called?

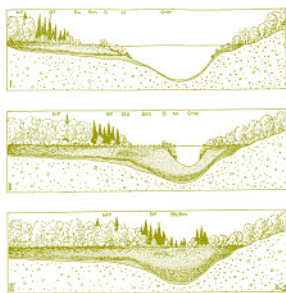
- A) Knitting Plutons
- B) Stitching Plutons
- C) Melding Plutons



Image: Blue Mountains, Oregongeology.org

“Keen observation is at least as necessary as penetrating analysis”

Karl Terzaghi



*"The earth is large and
old enough to teach us
modesty."*

Hans Cloos

TECCO® SYSTEM³ – Your slopes made stable

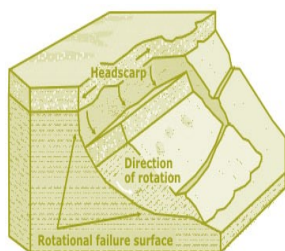
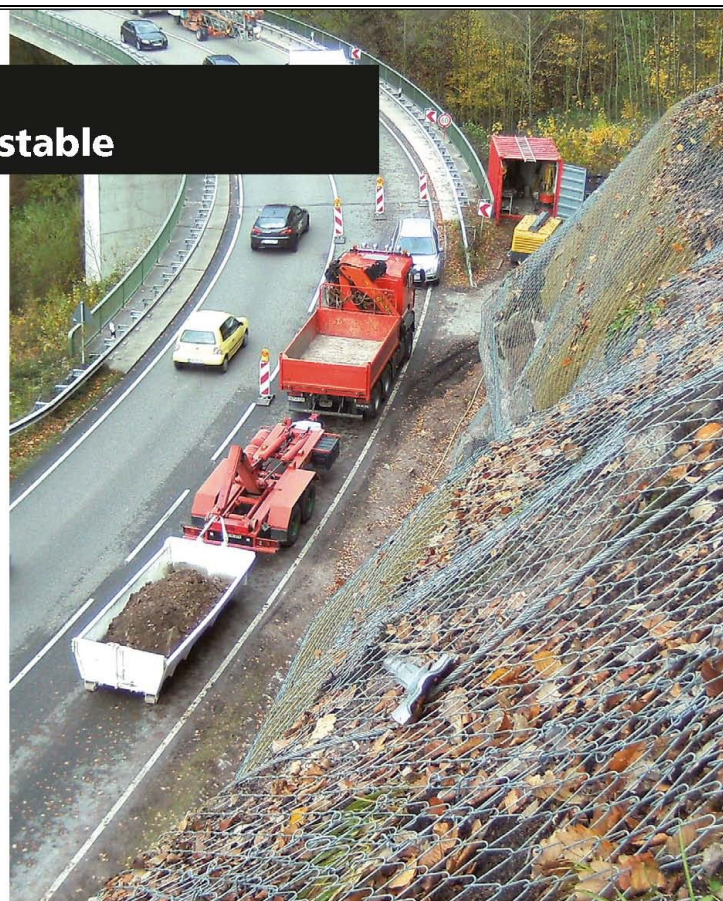
- TECCO® SYSTEM³ can be optimized depending on the subsoil with several mesh types
- meshes made of 2 mm, 3 mm and 4 mm diameter high-tensile steel wire
- optimization of anchor spacing thanks to two new spike plate sizes
- RUVOLUM® dimensioning software based on large-scale field and model tests
- small CO₂ footprint and option to cover with natural vegetation



Scan and watch our movie on
[www.geobrugg.com/youtube/](http://www.geobrugg.com/youtube/TECCO-fullscale)
TECCO-fullscale



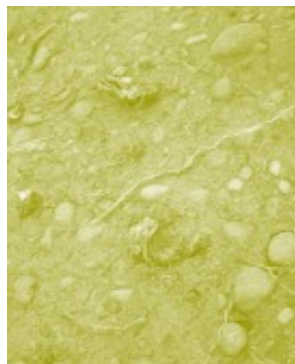
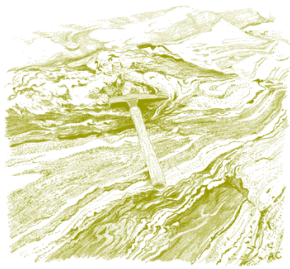
Geobrugg North America, LLC
Tim Shevlin, PG • Northwestern USA
Phone (503) 423-7258 • Fax (505) 771-4081
tim.shevlin@geobrugg.com
www.geobrugg.com



GEOPHYSICAL SURVEYING
for environmental
and geotechnical
applications



503.501.7846
nikos@pacificgeophysics.com
www.pacificgeophysics.com

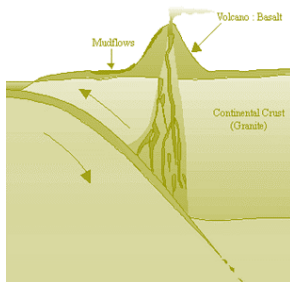


**Your Environmental,
Geotechnical
& Clean Water
Professionals**

360-771-7586

info@holtservicesinc.com

www.holtservicesinc.com



We engineer success stories.

PBS is a trusted source of practical, sustainable solutions to the region's environmental and engineering challenges—enabling projects to succeed and communities to thrive.

PBSUSA.COM

Quality People
Quality Results

37 years
in the
Northwest



ENVIRONMENTAL SERVICES • HEALTH & SAFETY
SURVEY • GEOTECHNICAL ENGINEERING
STRUCTURAL ENGINEERING • CIVIL ENGINEERING



EARTH DYNAMICS LLC

2284 NW. Thurman St.
Portland, OR 97210
(503) 227-7659
info@earthdyn.com

www.earthdyn.com

Providing Quality
Geophysical Services
since 1984

Engineering Geophysics:

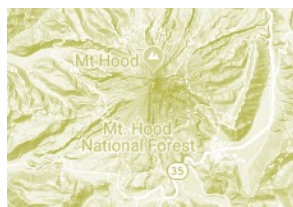
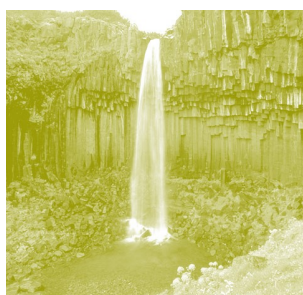
- Seismic Refraction/Reflection
- Shearwave Velocity Studies
- Electrical Resistivity Profiling
- Ground Penetrating Radar
- Magnetics/Electromagnetics
- Gravity
- Marine Geophysics

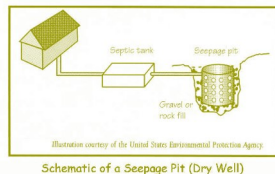
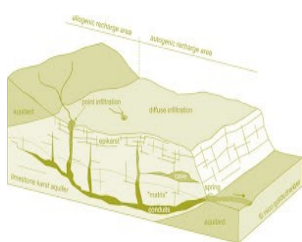
Vibration & Noise Analysis:

- Remote Vibration Monitoring
- Real-time Frequency Analysis
- Construction Monitoring
- Demolition Monitoring
- Blast Design and Monitoring
- Pre-construction Surveys
- Sensitive Equipment Certification

Rock Mechanics:

- Uniaxial Compressive Strength
- Direct and Traixial Shear Strength
- Direct and Indirect Tensile Strength
- Dynamic & Static Elastic Moduli
- Thermal Properties
- Density & Porosity
- Moisture Content





EARTH

Geotechnical Engineering
Environmental Remediation
Water Resources
Stormwater
Data + Mapping

Bainbridge Island
Bellingham
Bend
Portland
Seattle
Wenatchee
Yakima

Aspect
CONSULTING
www.aspectconsulting.com
971.865.5890

WATER

HI-TECH ROCKFALL CONSTRUCTION INC.

HI-TECH Rockfall is a General Contractor that specializes in Rockfall Mitigation and has been the industry leader for over 18 years. Our Highly Trained & Skilled Employees provide us the Highest Safety Record in the Industry.

Products and Services include:

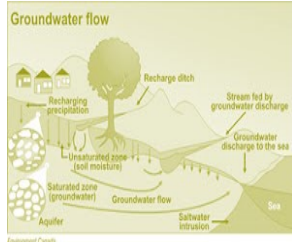
Highwall Stabilization	Wire Mesh Drapery
Rock Scaling	Rock Bolts
Rock Dowels	Shotcrete
Rockfall Barriers	Avalanche Nets
Instrumentation Installation	Rope Access Work

HI-TECH Rockfall Construction, Inc.
P.O. Box 674, Forest Grove, OR 97116

Office: (503) 357-6508
www.hitechrockfall.com

We Service Multiple Industries which include:

Government & Military	Highways
Mines & Quarries	Railroads
Commercial & Residential	Utilities



**SOIL and FOUNDATION
STABILIZATION SOLUTIONS
GEOTECHNICAL EXPLORATIONS**
in OREGON and WASHINGTON
503.649.8111 info@plisystems.com

- Drilled and Grouted Tie-Back Anchors
- Light Weight Fills: Foam & Cellular Concrete
- Geotechnical Drilling Explorations
- Shoring (temporary & permanent)
- Drainage, Including Horizontal
- Helical Anchors & Piles
- Drilled Shafts (caissons)
- Limited Access Drilling
- Landslide Stabilization

- Elevator Jack Shafts
- Displacement Piles
- Wall Construction
- Sheet Pile Walls
- Injection Boring
- Underpinning
- Rock Anchors
- Rock Coring
- Dewatering
- Pile Driving
- Micropiles
- Shotcrete
- Soil Nails
- Grouting
- Pin Piles
- SPT

"A soil adapted to the growth of plants, is necessarily prepared and carefully preserved; and, in the necessary waste of land which is inhabited, the foundation is laid for future continents, in order to support the system of the living world.."

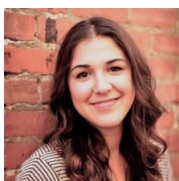
James Hutton



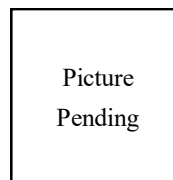
Chapter Officers & Committee Chairs



Chair:
Benjamin George
Cornforth Consultants, Inc.
bgeorge@ccilt.com



Program Chair:
Jasmin Jamal
Aspect Consulting
jjamal@aspectconsulting.com



Legislature Chair:
Volunteer Needed
This could be you!



Chair-Elect:
Michael Marshall
GRI
mmmarshall@gri.com



Field-Trip Chair:
Erin Dunbar
Geosyntec Consultants, Inc.
dunbar.erin@gmail.com



Newsletter Editor:
Bryon Free
Oregon Department of Transportation
Bryonfree@gmail.com



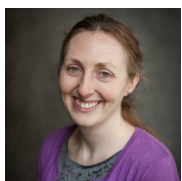
Treasurer:
Nancy Calhoun
DOGAMI
nancy.calhoun@oregon.gov



Membership Chair:
Ruth Wilmoth
Columbia Geotechnical, Inc.
ruthwilmoth@comcast.net



Webpage Editor:
Matt Randall
PBS Engineering and Environmental
matt.randall@pbsusa.com



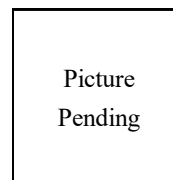
Secretary:
Aine Mines,
Cornforth Consultants, Inc.
amines@cornforthconsultants.com

**The Oregon Chapter is also on
the web at**

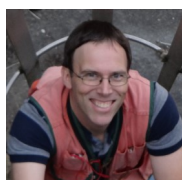
<http://www.aegoregon.org>

National AEG webpage:

<http://aegweb.org>



PSU Student Chapter President:
Stephanie Welch
Portland State University
sw22@pdx.edu



Past-Chair:
Chris Humphrey
FERC
geohumphrey@yahoo.com

Subscribe to the newsletter by sending any e-mail to
aegoregon-subscribe@groups.electricmembers.net

Thanks For Supporting AEG

Members, Volunteers, Aspect Consulting, Columbia Geotechnical, Cornforth Consultants Inc., DOGAMI, Earth Dynamics LLC., Federal Energy Regulatory Commission (FERC), Geobruigg, GRI, Hi-Tech Rockfall, Holt Drilling, NACSE, ODOT, Oregon State University, Pacific Geophysics, PBS Engineering & Environmental, PLI Systems, Portland State University, Western Oregon University

The AEG Oregon Chapter Newsletter

The Association of Engineering Geologists (AEG) contributes to its members' professional success and the public welfare by providing leadership, advocacy, and applied research in environmental and engineering geology. AEG's values are based on the belief that its members have a responsibility to assume stewardship over their fields of expertise. AEG is the acknowledged international leader in environmental and engineering geology, and is greatly respected for its stewardship of the profession.

AEG OREGON CHAPTER NEWSLETTER is published monthly from September through May. Subscriptions are for members of AEG affiliated with the Oregon Chapter or other Chapters, and other interested people who have requested and paid a local subscription fee of \$10.00. E-mail subscriptions are free. News items are invited and should be sent to: Ben George, AEG Oregon Chapter Chair-Elect, Cornforth Consultants, Inc., 10250 SW Greenburg Road, Suite 111, Portland, OR 97223, e-mail: bgeorge@ccilt.com, phone (503) 452-1100. Electronic media is preferred. Deadline for submittal is the 25th of the month. Advertising: business card size \$100/yr; ¼ page \$200/yr; ½ page \$350/yr; 1 page \$450/yr.

