

The Official

# AEG OREGON CHAPTER

HOSTED BEVERAGES

THANKS!

ANDERSON ENVIRONMENTAL  
Contracting, LLC (AEC)

## MEETING DETAILS

**Date:** Tuesday, Sept 17, 2019

**Location:** Old Market Pub

6959 SW Multnomah Blvd  
Portland, OR 97223

### Evening Agenda:

6:00 pm Social Hour

6:45 pm Dinner

7:30 pm Presentation

### Reservations:

[aeg-or-2019-09.brownpapertickets.com](http://aeg-or-2019-09.brownpapertickets.com)

\$25 Private Industry

\$20 Public Agencies

Free for Students

### Deadline:

12 noon Monday, Sept 16, 2019

\$2 surcharge for those who do  
not reserve by the deadline.

## UPCOMING MEETINGS:

Oct 15<sup>th</sup> Kevin Scott

Nov 19<sup>th</sup> Jon Allan (DOGAMI)

Dec 17<sup>th</sup> TBD

(Tell us a great story)

Jan 21<sup>st</sup> Joint ASCE

(TBD)

Feb 18<sup>th</sup> TBD

(Market your expertise)

Mar 17<sup>th</sup> Jahn's Lecturer

(Scott Lindvall)

Apr 21<sup>st</sup> TBD

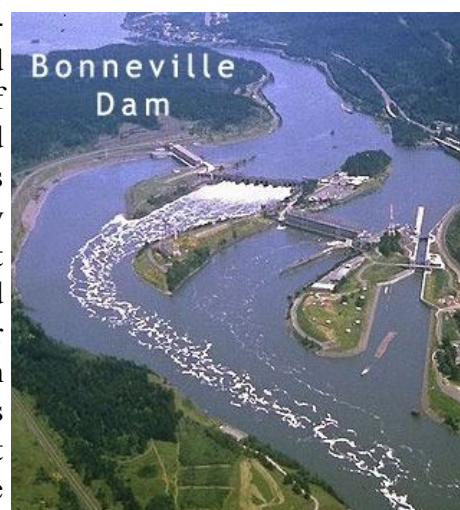
(Share your knowledge)

May 19<sup>th</sup> Student Poster Night

## Geology of the Bonneville Lock and Dam

**Guest Speaker: David Scofield, PE (USACE retired)**

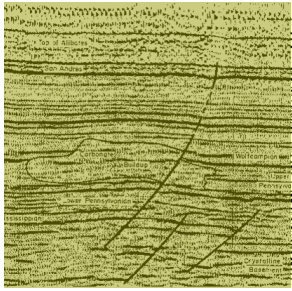
Bonneville Lock and Dam is a large run-of-the-river navigation improvements and hydropower project located 40 miles east of Portland, OR. The project was constructed by the US Army Corps of Engineers between 1934 and 1938 and subsequently modified with expansion of the first powerhouse in 1941, completion of a second powerhouse in 1981 and a larger replacement navigation lock in 1991. Smaller project modifications continues on Bonneville to the present day. This presentation focuses on the role and importance of geology in the design, construction and operation of the project.



## Bio: David Scofield, PE

Mr. Scofield has 43 years of professional work experience as a civil engineer, engineering geologist, and ground water hydrologist in the Pacific Northwest. He began his career as geologist with Portland District Army Corps of Engineers in 1976. He left the Corps in 1989 to work in the private sector as a civil engineer, specializing in geotechnical engineering. In 2001, Mr. Scofield returned to the Corps, in their Portland Geotechnical Section, working on foundation studies for buildings, major rehabilitation studies, and forensics of landslides, settlement, sinkholes. Beginning in about 2008 he became involved in dam safety reevaluations of Corps of Engineers' dams, working with teams conducting semi-Quantitative and Quantitative Risk Assessments. Mr. Scofield retired from federal service in April 2019, at which time he was presented with the de Fleury Medal (Bronze Order) for his 30 years of distinguished service with the US Army Corps of Engineers. Mr. Scofield earned a BS in Geology (1973) and BS in Civil Engineering (1982) from Portland State University, and a MS in Geology (1976) from Stanford University.





## Message from the Chair

Hello Oregon AEG Chapter! Yet another year of meetings is upon us. I hope everyone had a fun-filled summer of family, friends, trips, and bbqs. To begin the 2019-2020 meeting season, I would like to thank the 2018-2019 Chapter Board and Volunteers. Without all of you the Chapter would not function. This year the Board loses Mark Swank (Aspect), who is stepping down after 5 years of service. Thanks for your hard work on the Board and offering us a great board meeting place. Good luck with Co-Chair efforts for the 2020 Annual Meeting. Which reminds me: I'm sure there is room for additional volunteers if any of you are interested in helping make the Portland Annual Meeting a success. The meeting is being held September 14-19, 2020 with the motto Hazards in Hindsight, Lessons for the Future.

As Chair I look forward to working with Chris Humphrey (FERC) in the "wisdom donning" Past Chair position, Mike Marshall (GRI) as the "hand" Chair-Elect (who incidentally is also serving as Co-Chair of the 2020 Annual Meeting) and Nancy Calhoun (DOGAMI) as the "gate keeper" Treasurer. Our newest Board member is Aine Mines (Cornforth) who has been elected as Secretary. Aine received a Bachelor of Earth and Planetary Science from Washington University in St Louis and an MS in Civil and Environmental Engineering from UC Berkeley. She has been working as an engineering geologist, specializing in geotechnical investigations, geologic reconnaissance, soil and rock slope stability, and the emerging field of geotechnical asset management.

*"Keen observation is at least as necessary as penetrating analysis"*

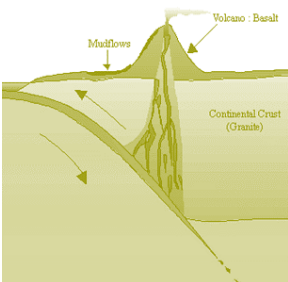
*Karl Terzaghi*

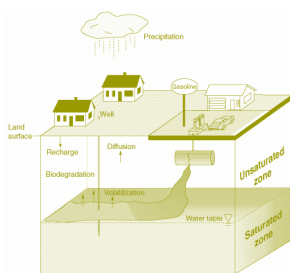
Our organization is made by volunteers. During this next year, please say hello and thank the following individuals: Matt Randall (PBS), Website Editor; Erin Dunbar (GeoSyntec), Field Trip Chair; Ruth Wilmoth (Columbia Geotechnical), Membership Chair; and Jennifer DiGiulio (US DOE), Legislature Chair. Once again, thank you volunteers for your time and service! Also, thank you to outgoing PSU Student Chapter President, Jessica Moore.

If you would like to get more involved, we have two opportunities available for additional volunteers. If you love what AEG brings to our community please consider being a Program Chair or Newsletter Editor. Both positions offer a fun way to interact with the Chapter Membership and Board.

Thanks for being a part of the community and see you at the meetings!

Ben George, P.E., R.G., C.E.G.  
Oregon AEG Chapter Chair





## Geology Quiz

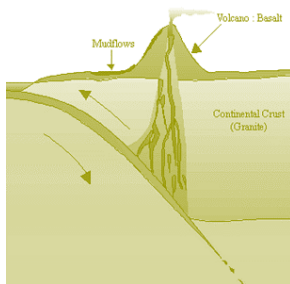
A rock described as argillaceous:

- A) contains flattened pebbles
- B) is clay-rich
- C) displays a satin luster
- D) is composed of coarse mica



## ANNUAL MEETING COUNTDOWN!

The 2020 Annual AEG meeting is in one year. The meeting will take place at the Downtown Marriott Hotel from September 14 through the 19th, 2020.



**AEG 2020**  
**PORTLAND OREGON**


HAZARDS IN HINDSIGHT  
LESSONS FOR THE FUTURE






*"The earth is large and  
old enough to teach us  
modesty."*

*Hans Cloos*



Applied Geophysics

**GEOPHYSICAL SURVEYING**  
for environmental  
and geotechnical  
applications



503.501.7846  
nikos@pacificgeophysics.com  
[www.pacificgeophysics.com](http://www.pacificgeophysics.com)



[www.geobrugg.com/slope](http://www.geobrugg.com/slope)



Safety is our nature

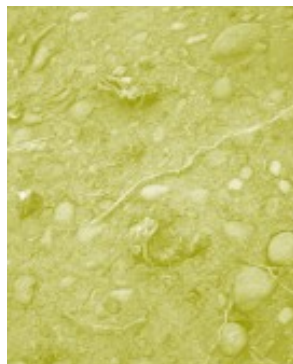
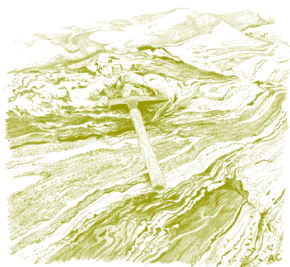
Free dimensioning tool  
[www.mygeobrugg.com](http://www.mygeobrugg.com)



TECCO® System made of high-tensile steel wire

SUSTAINABLE SLOPE  
PROTECTION





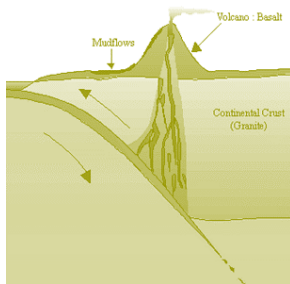
**Your Environmental,  
Geotechnical  
& Clean Water  
Professionals**

**360-771-7586**

**[info@holtservicesinc.com](mailto:info@holtservicesinc.com)**

**[www.holtservicesinc.com](http://www.holtservicesinc.com)**





## We engineer success stories.

PBS is a trusted source of practical, sustainable solutions to the region's environmental and engineering challenges—enabling projects to succeed and communities to thrive.

**PBSUSA.COM**



ENGINEERING • ENVIRONMENTAL  
HEALTH & SAFETY • SURVEY  
*36 Years Across the Northwest*



*Providing Quality  
Geophysical Services  
since 1984*

### ***EARTH DYNAMICS LLC***

2284 NW. Thurman St.  
Portland, OR 97210  
(503) 227-7659  
[info@earthdyn.com](mailto:info@earthdyn.com)

[www.earthdyn.com](http://www.earthdyn.com)

#### **Engineering Geophysics:**

- Seismic Refraction/Reflection
- Shearwave Velocity Studies
- Electrical Resistivity Profiling
- Ground Penetrating Radar
- Magnetics/Electromagnetics
- Gravity
- Marine Geophysics

#### **Vibration & Noise Analysis:**

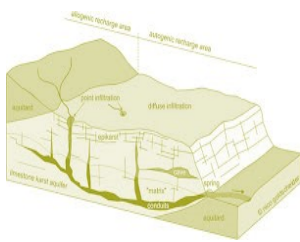
- Remote Vibration Monitoring
- Real-time Frequency Analysis
- Construction Monitoring
- Demolition Monitoring
- Blast Design and Monitoring
- Pre-construction Surveys
- Sensitive Equipment Certification

#### **Rock Mechanics:**

- Uniaxial Compressive Strength
- Direct and Traixial Shear Strength
- Direct and Indirect Tensile Strength
- Dynamic & Static Elastic Moduli
- Thermal Properties
- Density & Porosity
- Moisture Content







**EARTH**

Geotechnical Engineering  
Environmental Remediation  
Water Resources  
Stormwater  
Data + Mapping

Bainbridge Island  
Bellingham  
Bend  
Portland  
Seattle  
Wenatchee  
Yakima



[www.aspectconsulting.com](http://www.aspectconsulting.com)  
971.865.5890



HI-TECH Rockfall is a General Contractor that specializes in Rockfall Mitigation and has been the industry leader for over 18 years. Our Highly Trained & Skilled Employees provide us the Highest Safety Record in the Industry.



Products and Services include:

**Highwall Stabilization**

**Rock Scaling**

**Rock Dowels**

**Rockfall Barriers**

**Instrumentation Installation**

**Wire Mesh Drapery**

**Rock Bolts**

**Shotcrete**

**Avalanche Nets**

**Rope Access Work**

HI-TECH Rockfall Construction, Inc.  
P.O. Box 674, Forest Grove, OR 97116

Office: (503) 357-6508  
[www.hitechrockfall.com](http://www.hitechrockfall.com)



We Service Multiple Industries which include:

**Government & Military**

**Mines & Quarries**

**Commercial & Residential**

**Highways**

**Railroads**

**Utilities**

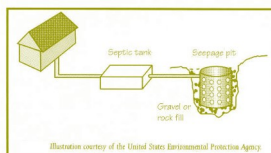
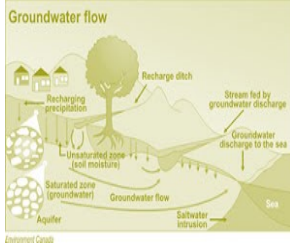


Illustration courtesy of the United States Environmental Protection Agency  
Schematic of a Seepage Pit (Dry Well)





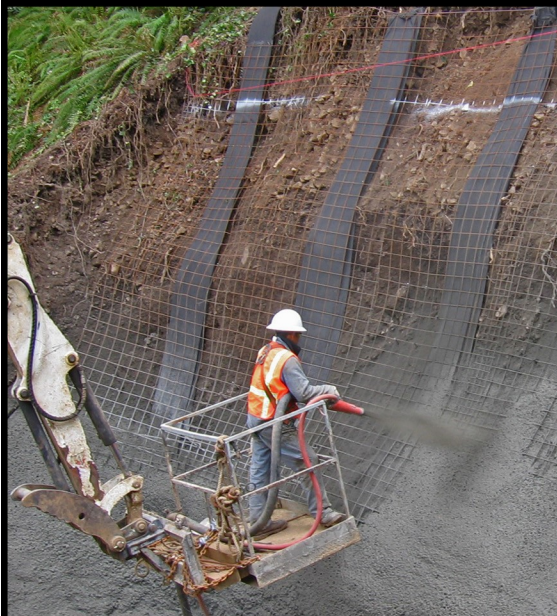
**SOIL and FOUNDATION  
STABILIZATION SOLUTIONS**  
in OREGON and WASHINGTON  
503.649.8111 info@plisystems.com

- Drilled and Grouted Tie-Back Anchors
- Geotechnical Drilling Explorations
- Shoring (temporary & permanent)
- Drainage, Including Horizontal
- Helical Anchors & Piles
- Drilled Shafts (caissons)
- Limited Access Drilling
- Landslide Stabilization

- Elevator Jack Shafts
- Displacement Piles
- Wall Construction
- Sheet Pile Walls
- Injection Boring
- Underpinning
- Rock Anchors
- Rock Coring
- Dewatering
- Pile Driving
- Micropiles
- Shotcrete
- Soil Nails
- Grouting
- Pin Piles
- SPT

*"A soil adapted to the growth of plants, is necessarily prepared and carefully preserved; and, in the necessary waste of land which is inhabited, the foundation is laid for future continents, in order to support the system of the living world.."*

*James Hutton*





## Chapter Officers & Committee Chairs



Chair:  
Benjamin George  
Cornforth Consultants, Inc.  
[bgeorge@ccilt.com](mailto:bgeorge@ccilt.com)

Have you ever  
wanted to be a  
part of some-  
thing bigger  
than you?

Program Chair:  
Opportunity One  
[Dream.job1@gmail.com](mailto:Dream.job1@gmail.com)



Legislature Chair:  
Jennifer DiGiulio  
National Energy Technology Laboratory,  
U.S. Department of Energy  
[jennifer.digiulio@netl.doe.gov](mailto:jennifer.digiulio@netl.doe.gov)



Chair-Elect:  
Michael Marshall  
GRI  
[mmarshall@gri.com](mailto:mmarshall@gri.com)



Field-Trip Chair:  
Erin Dunbar  
Geosyntec Consultants, Inc.  
[dunbar.erin@gmail.com](mailto:dunbar.erin@gmail.com)

Here are two  
opportunities  
of a life time...

Newsletter Editor:  
Opportunity Two  
[Dream.job2@gmail.com](mailto:Dream.job2@gmail.com)



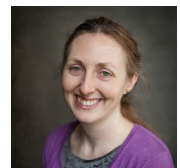
Treasurer:  
Nancy Calhoun  
DOGAMI  
[nancy.calhoun@oregon.gov](mailto:nancy.calhoun@oregon.gov)



Membership Chair:  
Ruth Wilmoth  
Columbia Geotechnical, Inc.  
[ruthwilmoth@comcast.net](mailto:ruthwilmoth@comcast.net)



Webpage Editor:  
Matt Randall  
PBS Engineering and Environmental  
[matt.randall@pbsusa.com](mailto:matt.randall@pbsusa.com)



Secretary:  
Aine Mines,  
Cornforth Consultants, Inc.  
[amines@cornforthconsultants.com](mailto:amines@cornforthconsultants.com)

The Oregon Chapter is also on  
the web at

<http://www.aegoregon.org>

National AEG webpage:

<http://aegweb.org>

Picture  
Pending

PSU Student Chapter President:  
Lucky New Person  
Portland State University  
[Lucky.new.person@psu.edu](mailto:Lucky.new.person@psu.edu)



Past-Chair:  
Chris Humphrey  
FERC  
[geohumphrey@yahoo.com](mailto:geohumphrey@yahoo.com)

Subscribe to the newsletter by sending any e-mail to  
[aegoregon-subscribe@groups.electricembers.net](mailto:aegoregon-subscribe@groups.electricembers.net)

## Thanks For Supporting AEG

Members, Volunteers, Columbia Geotechnical, Cornforth Consultants Inc., DOGAMI, Earth Dynamics LLC., Federal Energy Regulatory Commission (FERC), Geobruigg, GRI, Hi-Tech Rockfall, Holt Drilling, NACSE, ODOT, Oregon State University, Pacific Geophysics, PBS Engineering & Environmental, PLI Systems, Portland State University, Western Oregon University

## The AEG Oregon Chapter Newsletter

The Association of Engineering Geologists (AEG) contributes to its members' professional success and the public welfare by providing leadership, advocacy, and applied research in environmental and engineering geology. AEG's values are based on the belief that its members have a responsibility to assume stewardship over their fields of expertise. AEG is the acknowledged international leader in environmental and engineering geology, and is greatly respected for its stewardship of the profession.

AEG OREGON CHAPTER NEWSLETTER is published monthly from September through May. Subscriptions are for members of AEG affiliated with the Oregon Chapter or other Chapters, and other interested people who have requested and paid a local subscription fee of \$10.00. E-mail subscriptions are free. News items are invited and should be sent to: Ben George, AEG Oregon Chapter Chair-Elect, Cornforth Consultants, Inc., 10250 SW Greenburg Road, Suite 111, Portland, OR 97223, e-mail: [bgeorge@ccilt.com](mailto:bgeorge@ccilt.com), phone (503) 452-1100. Electronic media is preferred. Deadline for submittal is the 25th of the month. Advertising: business card size \$100/yr; ¼ page \$200/yr; ½ page \$350/yr; 1 page \$450/yr.

