

The Official

AEG OREGON CHAPTER NEWSLETTER

<http://www.aegoregon.org>

MEETING DETAILS

Date: Tues, Mar 26, 2019

Location: Old Market Pub

6959 SW Multnomah Blvd
Portland, OR 97223

Evening Agenda:

6:00 pm Social Hour

6:45 pm Dinner

7:30 pm Presentation

Registration:

Web: <https://aeg-or-2019-03.brownpapertickets.com/>

Fees: \$25 Private Industry

\$20 Public Agencies

Free for Students

Deadline:

Noon, Monday, Mar 25, 2019

\$2 surcharge for those who do not register by the deadline.

UPCOMING MEETINGS

Tues, April 16th, 2019

Bill Burns (DOGAMI)

Will Struble (UO - PhD Candidate)

Tues, May 21st, 2019

Student Poster Night

Let's Talk: A Conversation on How We Communicate about Science

Like members of any group with a common passion, geologists love to talk with each other about our work. That communication is important – it's how we share the results of our research and experience, and build our knowledge base as individuals and as a profession. It's also well within our comfort zone.

There's been a troubling shift in recent years in how scientific information is received outside of our own community, by the public and policy makers. As scientists, we must assume responsibility for at least part of the negative perceptions; we've separated ourselves, and in some cases talked down to our audiences, to the extent that we've failed to convey the importance of environmental and engineering geology. Speaking with those who don't know or understand our geologic "language" isn't necessarily comfortable, and doing it well certainly isn't easy. But we need to embrace that pursuit, communicating science well, as much as we embrace the work itself. Advocating effectively for our work will make it possible to do more of the science we so value, and for society to realize that value. In this presentation, we'll talk about the challenges of conversing with non-scientists about science, and why we must face those challenges head on.



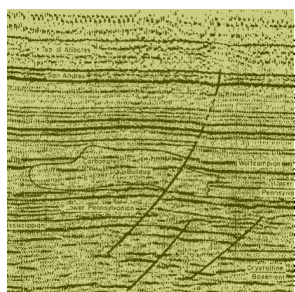
brace that pursuit, communicating science well, as much as we embrace the work itself. Advocating effectively for our work will make it possible to do more of the science we so value, and for society to realize that value. In this presentation, we'll talk about the challenges of conversing with non-scientists about science, and why we must face those challenges head on.

Bio: Deborah Green (Jahns Distinguished Lecturer)

Ms. Deborah Green has worked as an environmental and engineering geologist for 34 years in consulting and industry. For more than 20 of those years she's been self-employed. She discovered a love for geology as a kid when her earth science teacher father informally taught her all sorts of things about rocks on their summer camping adventures. Ms. Green earned a B.S. in geology from the University of Rochester and an M.S. in engineering geology from Texas A&M University.

These days, Ms. Green spends most of her work time writing. She recently completed my first novel, which is loosely based on a period in her late husband's life when he was the Chief Foundation Geologist for a large dam in East Central Turkey from the late 1960's to the early 1970's. On her website, www.geologistwriter.com, you can read essays in which she strives to understand and convey the wonder of the landscape and the complexity of earth processes, while also exploring the terrain of our lives.





Message from the Chair

Thanks to all those who attended the February meeting. It was a great turnout with even a greater topic.....An Active Volcano!! Dr. Weston Thelen did a great job presenting his work and experience studying the 2018 eruption of Kilauea in Hawaii. The 'plumbing' of the magma system in the volcano was fascinating, and the videos Dr. Thelen showed were spectacular. I would also like to thank AEC for hosting the beverages for the night. This was the first time we handed out drink tickets, and I think it went well.

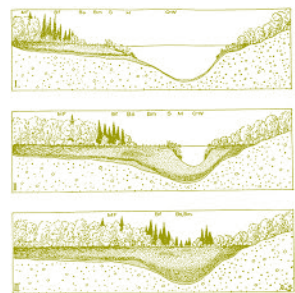
I hope that many of you will be able to make the 2019 SAGEEP meeting March 17-21, 2019 here in Portland. SAGEEP stands for the Symposium on the Application of Geophysics to Engineering and Environmental Problems. The conference is being held at the Portland Downtown Marriott Waterfront Hotel. It should be a great event.

This month we are honored to have the AEG Jahns Distinguished Lecturer, Ms. Deborah Green, present her talk on how we (as geologists) communicate about science. This is only one of five talks she is presenting throughout the year all over the U.S. The Chapter Board had a very difficult time selecting which talk we asked Ms. Green to present. They are all great topics and I encourage you all to visit her web page to read through her abstracts (<http://geologistwriter.com/distinguished-lecturer/>). And if you would like to hear another one of Ms. Green's talks ("You Don't Look Like a Geologist – A Conversation on Diversity (or Lack Thereof) in Our Profession"), you have your chance at the March 20th Nisqually Chapter Meeting (you can RSVP here: <https://aeg-nisqually.brownpapertickets.com/>).

Looking ahead to next month, we have a great presentation scheduled from two of our very own, Bill Burns and Will Struble. But we will also have a visit from the National AEG President himself, Mr. Dave Fenster. He will be in town that week and he asked to attend our monthly Chapter meeting. He has also very kindly offered to say a few words before our main presenters to give us an update on the State of AEG. So please put April 16th on your calendars and Meet the President!

And lastly, Jessica Moore, the PSU Student Chapter President, wanted me to remind you of a few PSU AEG student events coming up. An Earthquake Preparation Event will be held at PSU on April 1st from 5pm-8pm. On April 15th Dave Fenster (AEG National President) will be speaking at PSU (time and place to be determined). And on April 23rd a presentation from Jeff Rubin, Emergency manager from Tualatin Valley Fire & Rescue, will be given from 1:30 to 2:30 pm (PSU Cramer Hall S17). Please contact Jessica directly for additional information.

Christopher Humphrey, R.G., C.E.G.
Oregon AEG Chapter Chair



Student Poster Night

Our annual student poster night is quickly approaching. The flyer for this year's event is attached on the next page. Please encourage any participants interested in presenting at this year's event. Looking forward to seeing the research being conducted and meeting students from the region. Thanks for your efforts participants!

AEG's 2019 Student Poster Night

This year's student poster night will be held on
Tuesday May 21st, Old Market Pub, Portland

Who can submit a poster?

Bachelor, Master, and PhD students generally focused in geology and earth sciences studies – though others with relevant topics are welcome.

What topics are acceptable?

The subject should be directly related to geology and earth sciences but within a myriad of topics including environmental, engineering, soils, field mapping, GIS, technology, chemistry, etc. can all be considered. The project area does not have to be in Oregon. Posters associated with a senior project, master's thesis, or PhD dissertation are all acceptable, including in-progress work.

What do you need to do?

At least two weeks in advance of the meeting, notify the Oregon AEG Chapter Board of your topic and provide an abstract of the poster presentation by sending an email to: geohumphrey@yahoo.com

What does it cost?

Nothing. Student are always free to attend our monthly meetings and the meeting this year is free to all attendees. Food will be provided.

What can you win?

This year we will have multiple awards for the posters, including:

Best Undergraduate - \$250

Best Graduate - \$250

Best Quality of Presentation - \$150

Best Overall - \$350

**Most Relevant to Engineering
Geology Practice - \$200**

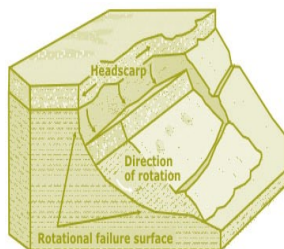
**Most Relevant to Environmental
Geology Practice - \$200**

Plus, each abstract submitter* will receive a \$25 gift card to REI

* — one gift card per poster or person if multiple posters are submitted

** — The first 30 poster submissions will be accepted due to venue space limitations

*** — One award per poster



Message from PSU Student Chapter President Jessica Moore

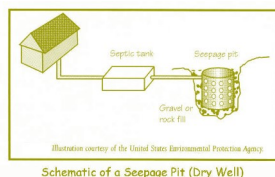
The PSU Student Chapter Chair would like to announce several upcoming events. For additional information please contact Jessica Moore at jlmm29@pdx.edu.

Event	Date and Time	Location	Description
Earthquake Preparation Event (EPE)	April 1, 2019 5-8pm	PSU Campus	
EQ Emergency Management	Jeff Rubin, Tualatin Valley Fire & Rescue	PSU Cramer Hall S17	

Free Journals Still Available

Courtesy of Scott Burns, PSU Geology Professor

I have been collecting journals at PSU over the past 20 years as our fellow engineering geologists retired and have given me their collection of journals. I need to clean out the storage basement at PSU and am offering them to anyone for free! I will deliver whatever you want. Some offices may want some for their libraries or your own personal libraries. Either call me (503-725-3389) or email me (burnss@pdx.edu) or talk to me at a monthly meeting!

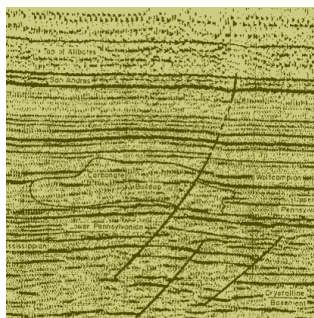


Geology Quiz

During 2015 University of Oregon students and faculty participating in a course on fossil plants, discovered a rare fossil from the bipedal Ornithomimid known as the Mitchell dinosaur.



What body part was found during the field course?

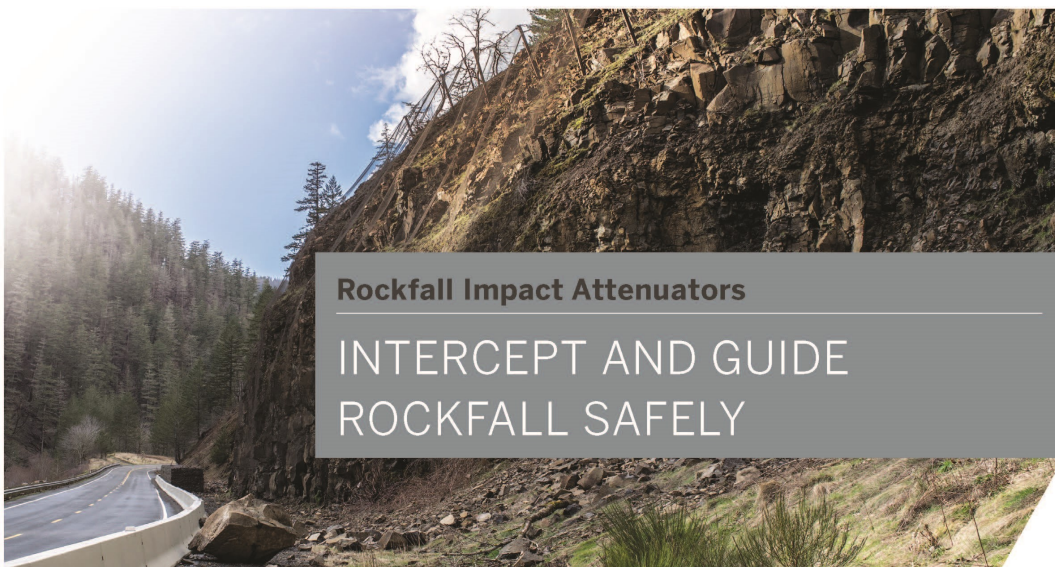


*"The earth is large and
old enough to teach us
modesty."*

Hans Cloos



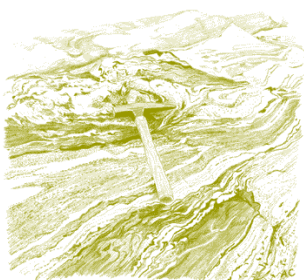
Learn more:
www.geobrugg.com/rockfall



Rockfall Impact Attenuators

INTERCEPT AND GUIDE
ROCKFALL SAFELY

Geobrugg North America, LLC | 22 Centro Algodones | Algodones, NM 87001 | USA | T +1 505 771 4080 | www.geobrugg.com

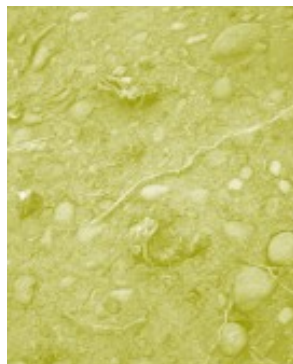
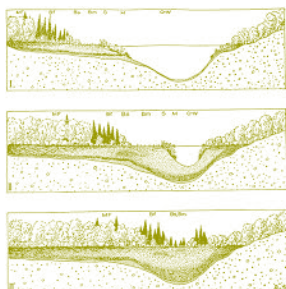


**PACIFIC
GEOPHYSICS**
Applied Geophysics

GEOPHYSICAL SURVEYING
for environmental
and geotechnical
applications

503.501.7846
nikos@pacificgeophysics.com
www.pacificgeophysics.com

A photograph of a grassy field with several black rectangular objects (likely sensors or equipment) laid out on the ground. A red and black piece of equipment is visible in the foreground. The background shows a line of trees under a clear sky.

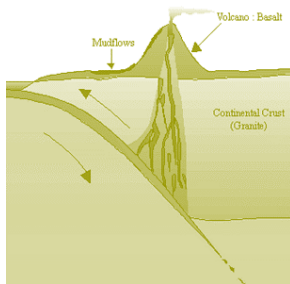


**Your Environmental,
Geotechnical
& Clean Water
Professionals**

360-771-7586

info@holtservicesinc.com

www.holtservicesinc.com



We engineer success stories.

PBS is a trusted source of practical, sustainable solutions to the region's environmental and engineering challenges—enabling projects to succeed and communities to thrive.

PBSUSA.COM



ENGINEERING • ENVIRONMENTAL
HEALTH & SAFETY • SURVEY
36 Years Across the Northwest



Providing Quality
Geophysical Services
since 1984

EARTH DYNAMICS LLC

2284 NW. Thurman St.
Portland, OR 97210
(503) 227-7659
info@earthdyn.com

www.earthdyn.com

Engineering Geophysics:

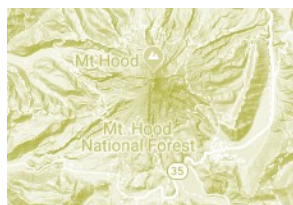
- Seismic Refraction/Reflection
- Shearwave Velocity Studies
- Electrical Resistivity Profiling
- Ground Penetrating Radar
- Magnetics/Electromagnetics
- Gravity
- Marine Geophysics

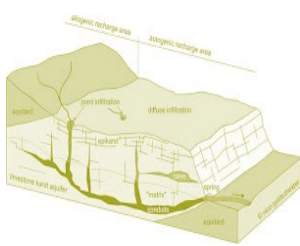
Vibration & Noise Analysis:

- Remote Vibration Monitoring
- Real-time Frequency Analysis
- Construction Monitoring
- Demolition Monitoring
- Blast Design and Monitoring
- Pre-construction Surveys
- Sensitive Equipment Certification

Rock Mechanics:

- Uniaxial Compressive Strength
- Direct and Triaxial Shear Strength
- Direct and Indirect Tensile Strength
- Dynamic & Static Elastic Moduli
- Thermal Properties
- Density & Porosity
- Moisture Content





EARTH

Geotechnical Engineering
Environmental Remediation
Water Resources
Stormwater
Data + Mapping

Bainbridge Island
Bellingham
Bend
Portland
Seattle
Wenatchee
Yakima

Aspect
CONSULTING

www.aspectconsulting.com
971.865.5890

WATER



HI-TECH Rockfall is a General Contractor that specializes in Rockfall Mitigation and has been the industry leader for over 18 years. Our Highly Trained & Skilled Employees provide us the Highest Safety Record in the Industry.



Products and Services include:

Highwall Stabilization

Rock Scaling

Rock Dowels

Rockfall Barriers

Instrumentation Installation

Wire Mesh Drapery

Rock Bolts

Shotcrete

Avalanche Nets

Rope Access Work

HI-TECH Rockfall Construction, Inc.
P.O. Box 674, Forest Grove, OR 97116

Office: (503) 357-6508
www.hitechrockfall.com



We Service Multiple Industries which include:

Government & Military

Mines & Quarries

Commercial & Residential

Highways

Railroads

Utilities

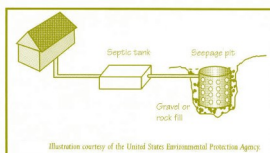
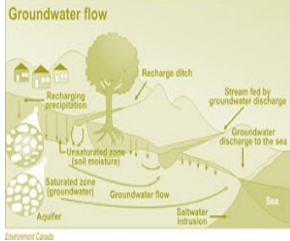


Illustration courtesy of the United States Environmental Protection Agency
Schematic of a Seepage Pit (Dry Well)



SOIL and FOUNDATION STABILIZATION SOLUTIONS in OREGON and WASHINGTON

503.649.8111 info@plisystems.com

- Drilled and Grouted Tie-Back Anchors
- Light Weight Fills: Foam & Cellular Concrete
- Geotechnical Drilling Explorations
- Shoring (temporary & permanent)
- Drainage, Including Horizontal
- Helical Anchors & Piles
- Drilled Shafts (caissons)
- Limited Access Drilling
- Landslide Stabilization

- Elevator Jack Shafts
- Displacement Piles
- Wall Construction
- Sheet Pile Walls
- Injection Boring
- Underpinning
- Rock Anchors
- Rock Coring

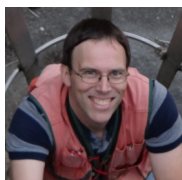
- Dewatering
- Pile Driving
- Micropiles
- Shotcrete
- Soil Nails
- Grouting
- Pin Piles
- SPT

"A soil adapted to the growth of plants, is necessarily prepared and carefully preserved; and, in the necessary waste of land which is inhabited, the foundation is laid for future continents, in order to support the system of the living world.."

James Hutton



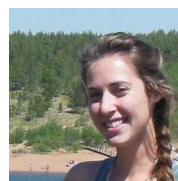
Chapter Officers & Committee



Chair:
Chris Humphrey
FERC
geohumphrey@yahoo.com

Help us at
AEG Oregon
bring inspiring
knowledge and
ideas.

Program Chair:
Opportunity One
Dream.job1@gmail.com



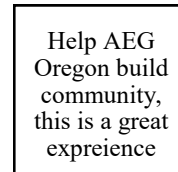
Legislature Chair:
Jennifer DiGiulio
National Energy Technology Laboratory,
U.S. Department of Energy
jennifer.digiulio@netl.doe.gov



Chair-Elect:
Benjamin George
Cornforth Consultants, Inc.
bgeorge@ccilt.com



Field-Trip Chair:
Erin Dunbar
Geosyntec Consultants, Inc.
dunbar.erin@gmail.com



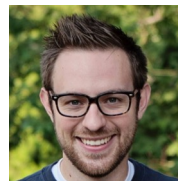
Newsletter Editor:
Opportunity Two
Dream.job2@gmail.com



Treasurer:
Michael Marshall
GRI
mmarshall@gri.com



Membership Chair:
Ruth Wilmoth
Columbia Geotechnical, Inc.
ruthwilmoth@comcast.net



Webpage Editor:
Matt Randall
PBS Engineering and Environmental
matt.randall@pbsusa.com



Secretary:
Nancy Calhoun
DOGAMI
nancy.calhoun@oregon.gov

The Oregon Chapter is also on
the web at

<http://www.aegoregon.org>

National AEG webpage:

<http://aegweb.org>



PSU Student Chapter President:
Jessica Moore
Portland State University
jlm29@pdx.edu



Past-Chair:
Mark Swank
Aspect Consulting
markswank@comcast.net

Subscribe to the newsletter by sending any e-mail to
aegoregon-subscribe@groups.electricembers.net

Thanks For Supporting AEG

Members, Volunteers, Aspect Consulting, Columbia Geotechnical, Cornforth Consultants Inc., DOGAMI, Earth Dynamics LLC., Federal Energy Regulatory Commission (FERC), Geobruigg, GRI, Hi-Tech Rockfall, Holt Drilling, NACSE, ODOT, Oregon State University, Pacific Geophysics, PBS Engineering & Environmental, PLI Systems, Portland State University, Western Oregon University

The AEG Oregon Chapter Newsletter

The Association of Engineering Geologists (AEG) contributes to its members' professional success and the public welfare by providing leadership, advocacy, and applied research in environmental and engineering geology. AEG's values are based on the belief that its members have a responsibility to assume stewardship over their fields of expertise. AEG is the acknowledged international leader in environmental and engineering geology, and is greatly respected for its stewardship of the profession.

AEG OREGON CHAPTER NEWSLETTER is published monthly from September through May. Subscriptions are for members of AEG affiliated with the Oregon Chapter or other Chapters, and other interested people who have requested and paid a local subscription fee of \$10.00. E-mail subscriptions are free. News items are invited and should be sent to: Ben George, AEG Oregon Chapter Chair-Elect, Cornforth Consultants, Inc., 10250 SW Greenburg Road, Suite 111, Portland, OR 97223, e-mail: bgeorge@ccilt.com, phone (503) 452-1100. Electronic media is preferred. Deadline for submittal is the 25th of the month. Advertising: business card size \$100/yr; ¼ page \$200/yr; ½ page \$350/yr; 1 page \$450/yr.

