

The Official

# AEG OREGON CHAPTER NEWSLETTER

<http://www.aegoregon.org>

## MEETING DETAILS

**Date:** Tues, Feb 19, 2019

**Location:** Old Market Pub

6959 SW Multnomah Blvd  
Portland, OR 97223

### Evening Agenda:

6:00 pm Social Hour

6:45 pm Dinner

7:30 pm Presentation

### Registration:

**Web:** <https://aeg-or-2019-02.brownpapertickets.com/>

**Fees:** \$25 Private Industry

\$20 Public Agencies

Free for Students

### Deadline:

Noon, Monday, Feb 18, 2019

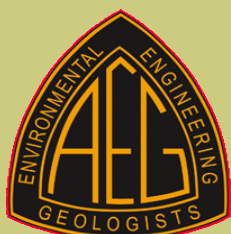
\$2 surcharge for those who do  
not register by the deadline.

## UPCOMING MEETINGS

**Tues, March 26<sup>th</sup>, 2019**  
Debrah Green (Geologist Writer)  
(Jahns Distinguished Lecturer)

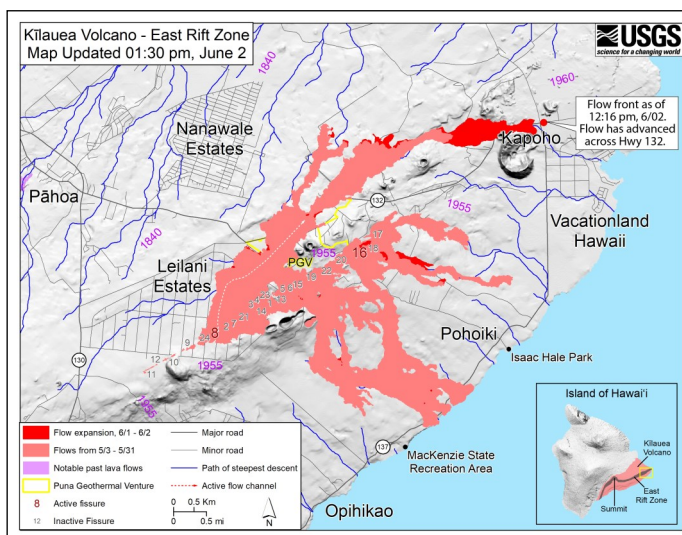
**Tues, April 16<sup>th</sup>, 2019**  
Bill Burns (DOGAMI)  
Will Struble (UO - PhD Candidate)

**Tues, May 21<sup>st</sup>, 2019**  
Student Poster Night



## 2018 Eruption of Kilauea, Hawaii

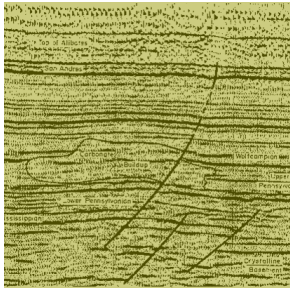
The 2018 eruption of Kilauea was a truly remarkable eruption. In addition, it was incredibly well observed and thus will bear scientific fruit for many years to come. In this talk Dr. Thelen will give a narrative overview of how the Kilauea eruption played out, focusing on the ability of scientist to assess the hazard and alert the public in a timely manner. He will also present some of the new tools that were used during the eruption and some of the scientific findings that found along the way.



## Bio: Dr. Weston Thelen

Growing up in Northern California around Lake Tahoe, Dr. Thelen's love of volcanoes was kindled by climbing and skiing Mount Lassen and Mount Shasta. In 2004, he received a double major in both geology and geophysics from the University of Nevada, Reno. He attended graduate school at the University of Washington in the fall of 2004, about 1 month before the most recent eruption of Mount St. Helens. After receiving a Ph.D. in 2009 under Steven Malone, he had post-doctorate positions at the Pacific Northwest Seismic Network and USGS Cascade Volcano Observatory (CVO). In 2011, Dr. Thelen became the Seismic Network Manager at the USGS Hawaiian Volcano Observatory (HVO). On the day he arrived in Hawaii, the Kamoamoa fissure erupted, lasting 7 days. In 2017, Dr. Thelen returned to the USGS CVO where he currently is a Research Seismologist. During the 2018 eruption at Kilauea Dr. Thelen played a key role due to his experience at HVO and ongoing research in Hawaiian volcanoes. When not responding to volcanic eruptions, Dr. Thelen enjoys spending time trail running and chasing around his three kids.





## Message from the Chair

Well, the year is off to a great start. We had over 100 in attendance for last months Joint AEG/ASCE meeting, with about equal numbers from AEG and the ASCE geotech group. We were all treated to a fantastic presentation by Doug Boyer, with FERC, who provided an overview of the Oroville spillway incident and the subsequent two years of re-construction work. He did a great job summarizing all the work that had been done to date. What an amazing effort to get the spillway operational again. I hope you all enjoyed the venue at Kells Irish Pub and enjoyed the wonderful buffet dinner. I would personally like to thank Wade Osborne (Oregon ASCE Geotech President) and the entire ASCE board for their support on the event. I'm already looking forward to next year.

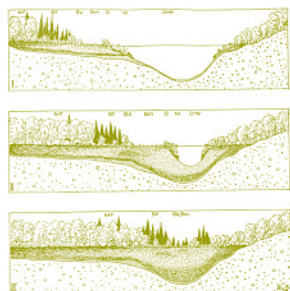
AEG headquarters is starting to put together the April Issue of AEG News. The theme of the issue will be "The Changing Climate". They are looking for professional short (1-2 pages) and long (4-6 pages) articles specific to this topic. Professional articles could include research related to climate change, climate effects geologic hazards, or how climate has affected your job, local landscape, projects, etc. If you would like to submit an article please contact Chrissey Villeneuve (AEG Submissions Editor), [chrissey.aeg@gmail.com](mailto:chrissey.aeg@gmail.com).

As I announced in my January 22, 2019 email, Oregon Senate Bills SB 43 and SB 44 were heard in front of the Senate's Committee on Business and General Government on January 24th. These bills would change the Oregon geology licensing law. Both these bills were approved by the Committee and are currently on the Senate President's desk waiting to be heard by the entire Senate. I was a little disappointed by the lack of public testimony during the committee hearing, either in person or written. Again, these bills **WILL CHANGE THE GEOLOGY LAW** and would impact your professional practice. They are deserving of your attention and testimony. If they are voted out of the Senate they will then be assigned a House committee for consideration. I deeply hope that there will be more testimonies presented (in person or written) by our professional geologic community (either in favor or opposed). **LICENSURE IS IMPORTANT** and is worth your time to provide your opinions to the law makers who are charged with determining the future of YOUR geology practice.

Christopher Humphrey, R.G., C.E.G.  
Oregon AEG Chapter Chair

## AEC Hosting the February Meeting Beverages!

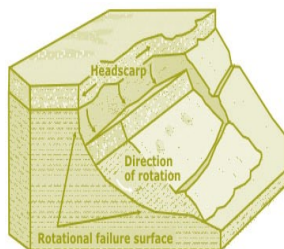
Thanks to Anderson Environmental Contracting, LLC (AEC) for hosting the beverages at the February Meeting! Remember to get your two tickets for free beverage at sign-in.



*"Keen observation is at  
least as necessary as  
penetrating analysis"*

*Karl Terzaghi*

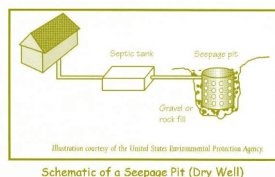




## Message from PSU Student Chapter President Jessica Moore

The PSU Student Chapter Chair would like to announce several upcoming events. For additional information please contact Jessica Moore at [jl29@pdx.edu](mailto:jl29@pdx.edu).

Event	Date and Time	Location	Description
Field Camp Information Session	Mon. Feb 11 2:15-3:00 pm	PSU, Cramer Hall, Rm 59	Shared field camp experiences from graduate and undergraduate students for incoming field campers, co-sponsored by AEG and CORIBA
Life and Professional Development as a Hazard Consultant	Mon, Feb 18 2:30-3:15 pm	PSU, Cramer Hall, Rm S17	
Earthquake Preparation Event (EPE)	Early April 2019	TBD	
"Mega"quake Info and Preparedness Meeting	TBD	TBD	Informational meeting to raise public awareness for potential of earthquakes and other natural disasters in Portland and the Pacific Northwest, co-sponsored by AEG, CORIBA, ASCE, EERI, ITE-STEP, SWE, IEEE, and ASPSU



## Free Journals Still Available

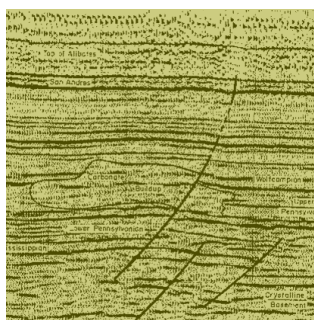
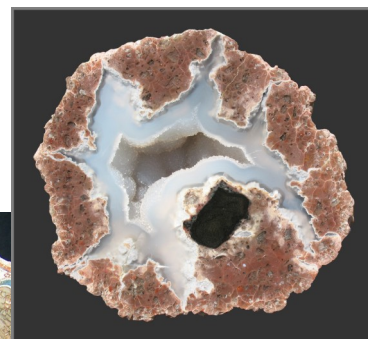
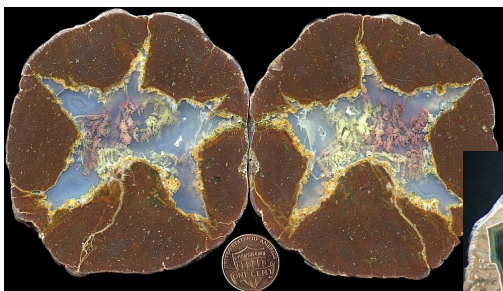
### Courtesy of Scott Burns, PSU Geology Professor

I have been collecting journals at PSU over the past 20 years as our fellow engineering geologists retired and have given me their collection of journals. I need to clean out the storage basement at PSU and am offering them to anyone for free! I will deliver whatever you want. Some offices may want some for their libraries or your own personal libraries. Either call me (503-725-3389) or email me ([burnss@pdx.edu](mailto:burnss@pdx.edu)) or talk to me at a monthly meeting!

## Geology Quiz

On March 30, 1965, the thunderegg was designated as the Oregon State Rock. While thundereggs can be collected all over Oregon, the largest deposits are found in Cook, Jefferson, Malheur, Wasco, and Wheeler Counties.

What type of volcanic ash typically forms a Thunderegg?



No internet searching....

*"The earth is large and  
old enough to teach us  
modesty."*

*Hans Cloos*



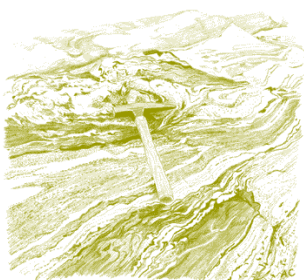
Learn more:  
[www.geobrugg.com/rockfall](http://www.geobrugg.com/rockfall)



### Rockfall Impact Attenuators

INTERCEPT AND GUIDE  
ROCKFALL SAFELY

Geobrugg North America, LLC | 22 Centro Algodones | Algodones, NM 87001 | USA | T +1 505 771 4080 | [www.geobrugg.com](http://www.geobrugg.com)

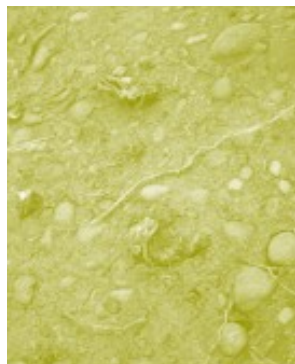
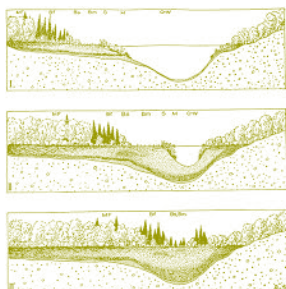


**PACIFIC  
GEOPHYSICS**  
Applied Geophysics

**GEOPHYSICAL SURVEYING**  
for environmental  
and geotechnical  
applications

503.501.7846  
[nikos@pacificgeophysics.com](mailto:nikos@pacificgeophysics.com)  
[www.pacificgeophysics.com](http://www.pacificgeophysics.com)





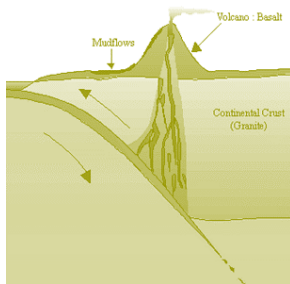
**Your Environmental,  
Geotechnical  
& Clean Water  
Professionals**

**360-771-7586**

**[info@holtservicesinc.com](mailto:info@holtservicesinc.com)**

**[www.holtservicesinc.com](http://www.holtservicesinc.com)**





## We engineer success stories.

PBS is a trusted source of practical, sustainable solutions to the region's environmental and engineering challenges—enabling projects to succeed and communities to thrive.

**PBSUSA.COM**



ENGINEERING • ENVIRONMENTAL  
HEALTH & SAFETY • SURVEY  
*36 Years Across the Northwest*



Providing Quality  
Geophysical Services  
since 1984

### ***EARTH DYNAMICS LLC***

2284 NW. Thurman St.  
Portland, OR 97210  
(503) 227-7659  
[info@earthdyn.com](mailto:info@earthdyn.com)

[www.earthdyn.com](http://www.earthdyn.com)

#### **Engineering Geophysics:**

- Seismic Refraction/Reflection
- Shearwave Velocity Studies
- Electrical Resistivity Profiling
- Ground Penetrating Radar
- Magnetics/Electromagnetics
- Gravity
- Marine Geophysics

#### **Vibration & Noise Analysis:**

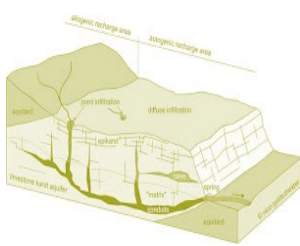
- Remote Vibration Monitoring
- Real-time Frequency Analysis
- Construction Monitoring
- Demolition Monitoring
- Blast Design and Monitoring
- Pre-construction Surveys
- Sensitive Equipment Certification

#### **Rock Mechanics:**

- Uniaxial Compressive Strength
- Direct and Triaxial Shear Strength
- Direct and Indirect Tensile Strength
- Dynamic & Static Elastic Moduli
- Thermal Properties
- Density & Porosity
- Moisture Content







**EARTH**

Geotechnical Engineering  
Environmental Remediation  
Water Resources  
Stormwater  
Data + Mapping

Bainbridge Island  
Bellingham  
Bend  
Portland  
Seattle  
Wenatchee  
Yakima

**Aspect**  
CONSULTING

[www.aspectconsulting.com](http://www.aspectconsulting.com)  
971.865.5890

**WATER**



HI-TECH Rockfall is a General Contractor that specializes in Rockfall Mitigation and has been the industry leader for over 18 years. Our Highly Trained & Skilled Employees provide us the Highest Safety Record in the Industry.



Products and Services include:

**Highwall Stabilization**

**Rock Scaling**

**Rock Dowels**

**Rockfall Barriers**

**Instrumentation Installation**

**Wire Mesh Drapery**

**Rock Bolts**

**Shotcrete**

**Avalanche Nets**

**Rope Access Work**

HI-TECH Rockfall Construction, Inc.  
P.O. Box 674, Forest Grove, OR 97116

Office: (503) 357-6508  
[www.hitechrockfall.com](http://www.hitechrockfall.com)



We Service Multiple Industries which include:

**Government & Military**

**Mines & Quarries**

**Commercial & Residential**

**Highways**

**Railroads**

**Utilities**

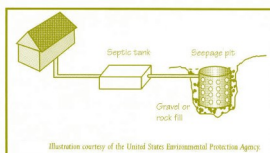
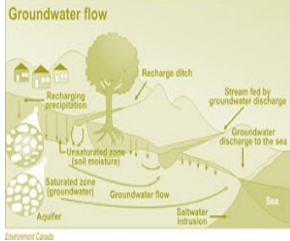


Illustration courtesy of the United States Environmental Protection Agency  
Schematic of a Seepage Pit (Dry Well)





## SOIL and FOUNDATION STABILIZATION SOLUTIONS in OREGON and WASHINGTON

503.649.8111 info@plisystems.com

- Drilled and Grouted Tie-Back Anchors
- Light Weight Fills: Foam & Cellular Concrete
- Geotechnical Drilling Explorations
- Shoring (temporary & permanent)
- Drainage, Including Horizontal
- Helical Anchors & Piles
- Drilled Shafts (caissons)
- Limited Access Drilling
- Landslide Stabilization

- Elevator Jack Shafts
- Displacement Piles
- Wall Construction
- Sheet Pile Walls
- Injection Boring
- Underpinning
- Rock Anchors
- Rock Coring

- Dewatering
- Pile Driving
- Micropiles
- Shotcrete
- Soil Nails
- Grouting
- Pin Piles
- SPT

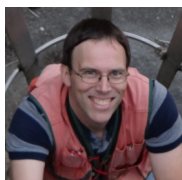
*"A soil adapted to the growth of plants, is necessarily prepared and carefully preserved; and, in the necessary waste of land which is inhabited, the foundation is laid for future continents, in order to support the system of the living world.."*

*James Hutton*





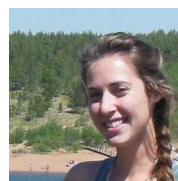
## Chapter Officers & Committee



Chair:  
Chris Humphrey  
FERC  
[geohumphrey@yahoo.com](mailto:geohumphrey@yahoo.com)

Help us at  
AEG Oregon  
bring inspiring  
knowledge and  
ideas.

Program Chair:  
Opportunity One  
[Dream.job1@gmail.com](mailto:Dream.job1@gmail.com)



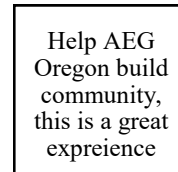
Legislature Chair:  
Jennifer DiGiulio  
National Energy Technology Laboratory,  
U.S. Department of Energy  
[jennifer.digiulio@netl.doe.gov](mailto:jennifer.digiulio@netl.doe.gov)



Chair-Elect:  
Benjamin George  
Cornforth Consultants, Inc.  
[bgeorge@ccilt.com](mailto:bgeorge@ccilt.com)



Field-Trip Chair:  
Erin Dunbar  
Geosyntec Consultants, Inc.  
[dunbar.erin@gmail.com](mailto:dunbar.erin@gmail.com)



Newsletter Editor:  
Opportunity Two  
[Dream.job2@gmail.com](mailto:Dream.job2@gmail.com)



Treasurer:  
Michael Marshall  
GRI  
[mmarshall@gri.com](mailto:mmarshall@gri.com)



Membership Chair:  
Ruth Wilmoth  
Columbia Geotechnical, Inc.  
[ruthwilmoth@comcast.net](mailto:ruthwilmoth@comcast.net)



Webpage Editor:  
Matt Randall  
PBS Engineering and Environmental  
[matt.randall@pbsusa.com](mailto:matt.randall@pbsusa.com)



Secretary:  
Nancy Calhoun  
DOGAMI  
[nancy.calhoun@oregon.gov](mailto:nancy.calhoun@oregon.gov)

The Oregon Chapter is also on  
the web at

<http://www.aegoregon.org>

National AEG webpage:

<http://aegweb.org>



PSU Student Chapter President:  
Jessica Moore  
Portland State University  
[jlm29@pdx.edu](mailto:jlm29@pdx.edu)



Past-Chair:  
Mark Swank  
Aspect Consulting  
[markswank@comcast.net](mailto:markswank@comcast.net)

Subscribe to the newsletter by sending any e-mail to  
[aegoregon-subscribe@groups.electricembers.net](mailto:aegoregon-subscribe@groups.electricembers.net)

## Thanks For Supporting AEG

Members, Volunteers, Aspect Consulting, Columbia Geotechnical, Cornforth Consultants Inc., DOGAMI, Earth Dynamics LLC., Federal Energy Regulatory Commission (FERC), Geobruigg, GRI, Hi-Tech Rockfall, Holt Drilling, NACSE, ODOT, Oregon State University, Pacific Geophysics, PBS Engineering & Environmental, PLI Systems, Portland State University, Western Oregon University

## The AEG Oregon Chapter Newsletter

The Association of Engineering Geologists (AEG) contributes to its members' professional success and the public welfare by providing leadership, advocacy, and applied research in environmental and engineering geology. AEG's values are based on the belief that its members have a responsibility to assume stewardship over their fields of expertise. AEG is the acknowledged international leader in environmental and engineering geology, and is greatly respected for its stewardship of the profession.

AEG OREGON CHAPTER NEWSLETTER is published monthly from September through May. Subscriptions are for members of AEG affiliated with the Oregon Chapter or other Chapters, and other interested people who have requested and paid a local subscription fee of \$10.00. E-mail subscriptions are free. News items are invited and should be sent to: Ben George, AEG Oregon Chapter Chair-Elect, Cornforth Consultants, Inc., 10250 SW Greenburg Road, Suite 111, Portland, OR 97223, e-mail: [bgeorge@ccilt.com](mailto:bgeorge@ccilt.com), phone (503) 452-1100. Electronic media is preferred. Deadline for submittal is the 25th of the month. Advertising: business card size \$100/yr; ¼ page \$200/yr; ½ page \$350/yr; 1 page \$450/yr.

