

The Official

AEG OREGON CHAPTER NEWSLETTER

<http://www.aegoregon.org>

May Meeting Details

Tuesday, May 15th

Location: Old Market Pub

6959 SW Multnomah Blvd

Portland, Oregon

6:00 pm Social and Posters

6:45 pm Dinner

7:30 pm Presentation

Dinner: Salad and Pizza

Dinner is FREE

Reservations by 4 pm Fri
May 11th at

<http://aeg-or-2018-05.brownpapertickets.com>

There is a \$2 surcharge for
those who do not reserve by
the deadline

Upcoming Meetings:

Sep 15th TBD



May Meeting Double Feature — Annual Student Night and Bridge of the Gods Landslide

PLI IS HOSTING
THE BEVERAGES!

- Samantha Abel, WOU, *Sediment Transport and Spawning Gravel Maintenance*
- Adam Baron, WOU, *Turbidity Effects on Water Quality and Habitat*
- Nick Barrera, WOU, *Small Dam Removal and Geomorphic Response*
- Cassie Borchert, WOU, *The Role of Woody Debris and Channel Bed Composition in Salmonid Habitat*
- Jared Bynum-Lewis, WOU, *Channel Form and Morphology: The Meander Problem*
- Tunya Dhevaphalin, WOU, *Fish Passage and Culvert Modification*
- Sophie Hall, WOU, *Stream Temperature and Salmonid Habitat Quality*
- Kara Kingen, PSU, *Estimating Sand Loss: Using eolian sand ramps as a proxy for estimating past erosion within the Lincoln City Dune Sheet; Lincoln City, Oregon.*
- Václav Kuna, OSU, *Mode of slip and crust-mantle interaction at oceanic transform faults*
- Ethan Muncrief, WOU, *Wood Placement and Habitat Modification*
- Lance Nielsen, WOU, *Channel Incision and Bank Erosion*
- Nicole Niskanen, WOU, *Nutrient Supplementation and Water Quality*
- Zach Nuhring, PSU, *δD Variability in Volcanic Glass Preparation Methods*
- Aaron Orr, WOU, *Streamflow Hydrology and River Restoration*
- Maddie Peterson, WOU, *Floodplain Connectivity and Side Channel Restoration*
- Walter Schoen, WOU, *Overview of River Restoration Practice in the Pacific Northwest*
- Peggy Smith, WOU, *Riparian Vegetation and Habitat Restoration*
- Makani Stormont, WOU, *Channel Modification and Engineered Solutions*
- Austin Wegner, WOU, *Sediment Transport and Gravel Distribution*

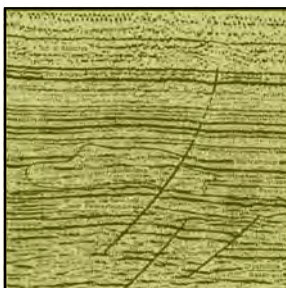
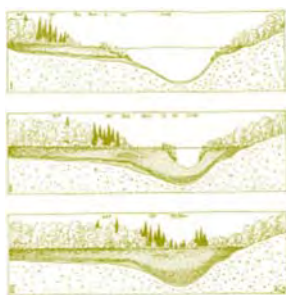


Bridge of the Gods Landslide

Speaker: Nick Zentner



Central Washington University geology professor Nick Zentner will discuss new research on the Bridge of the Gods Landslide in the Columbia River Gorge. Also known as the Bonneville Landslide, the date of the slide has been narrowed to a 25-year window and a new discussion of a potential trigger for the slide will be featured.





Message from the Chair

Thanks to everyone who attended our April meeting presentation from the 2017-2018 AEG National Richard H. Jahns Distinguished Lecturer, Dr. John Wakabayashi. Dr. Wakabayashi has a tremendous amount of energy and his enthusiasm for proper mapping skills and, in general, for the complexity of mélanges, was inspiring. We also got to hear from the AEG National President Greg Hempen on the state and direction of the organization. If you have any feedback for Greg, please reach out to him at president@aegweb.org.

THIS IS IT! Last meeting of the year and it is our annual Student Poster Night that will be capped with a presentation by Nick Zentner from Central Washington University. We currently have 18 students signed up, with the majority representing Western Oregon University. Please show your support for the students from our local colleges and universities by attending this meeting. Plus, this year's meeting will be FREE for all attendees and with a sponsored bar – THANK YOU PLI Systems, Inc.! – so no excuses. Please encourage any who you know may have interest. Remind them large sums of money are awarded to at least five students.

As soon as it ends, the next year begins and we are beginning our search for our monthly meeting speaker line up. If you, or someone you know, is interested – or should be – to give a presentation for the 2018-2019 year, please reach out to the Board.

VOLUNTEER OPPORTUNITIES: We are bringing our AEG Oregon Chapter Committee Chair positions into the 2nd decade of the 21st Century with some reorganization. As a reminder, we are looking to fill:

- The Technology Team – one volunteer done, looking for the second,
- Chapter Board Secretary

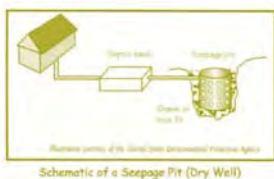
Our Chapter is guided by us volunteers, the more people involved the better our ideas for progressing our offerings and the smoother we run. Please consider volunteering for one of these positions for the coming year(s).

Our 2020 National meeting will be here sooner than we think. Several members volunteered to be part of the planning committee during the proposal, but times change and some of these folks are no longer in the area. Several people have come forward but there is still much to do. If you are interested in contributing, please reach out to Linda Marks and/or myself. Additional information will be provided at our upcoming monthly meeting.

As a reminder once again, our 61st AEG Annual Meeting / 13th IAEG Congress is scheduled for September 15th to the 23rd, at the Hyatt Regency in San Francisco. Registration is now open – be sure to register today! For meeting information and updates visit www.aegweb.org/SanFrancisco2018. We are literally trying to give two free trips to the event to two lucky students, please either submit the application form (which will be included in the newsletter) or encourage a student to do so.

I look forward to seeing everyone at our May meeting!

Mark Swank, CEG
AEG Oregon Chapter Chair



*“Keen observation is at
least as necessary as
penetrating analysis”*

Karl Terzaghi

*"The earth is large and
old enough to teach us
modesty."*

Hans Cloos



TECCO® SYSTEM³ – Your slopes made stable

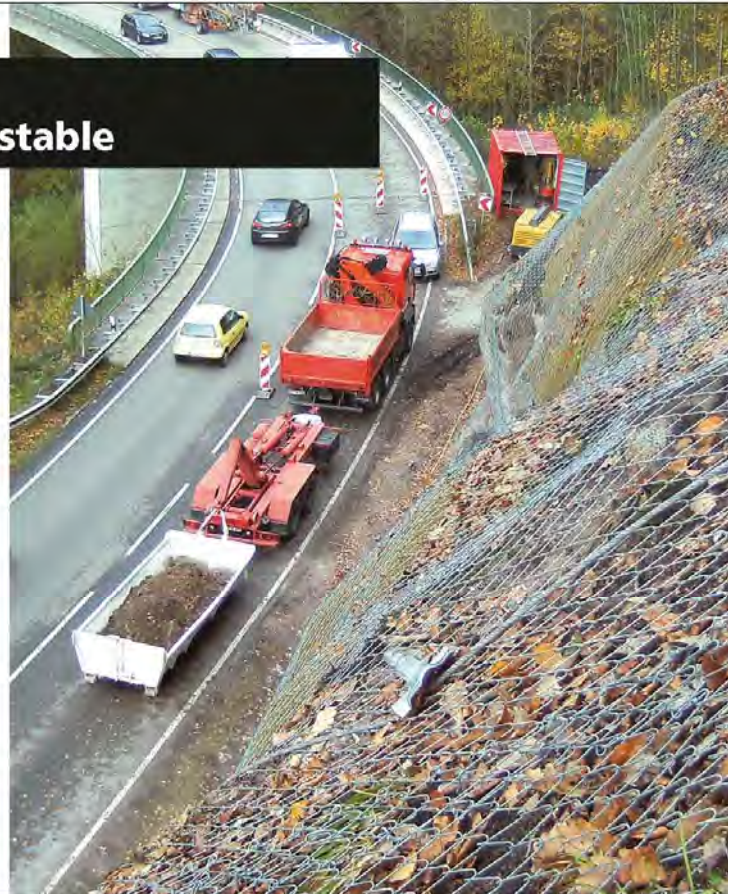
- TECCO® SYSTEM³ can be optimized depending on the subsoil with several mesh types
- meshes made of 2 mm, 3 mm and 4 mm diameter high-tensile steel wire
- optimization of anchor spacing thanks to two new spike plate sizes
- RUVOLUM® dimensioning software based on large-scale field and model tests
- small CO₂ footprint and option to cover with natural vegetation



Scan and watch our movie on
[www.geobrugg.com/youtube/
TECCO-fullscale](http://www.geobrugg.com/youtube/TECCO-fullscale)



Geobrugg North America, LLC
Tim Shevlin, PG • Northwestern USA
Phone (503) 423-7258 • Fax (505) 771-4081
tim.shevlin@geobrugg.com
www.geobrugg.com



GEOPHYSICAL SURVEYING
for environmental
and geotechnical
applications



503.501.7846

nikos@pacificgeophysics.com
www.pacificgeophysics.com

TERRA HYDR INC.

(503) 625-4000
24 Hour Service

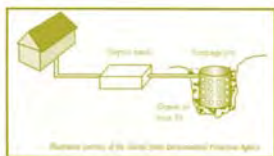
PO Box 3616
Portland Or. 97208

*Proudly serving the
region's premiere
consultants and
quality conscious
industrial clients*

ENVIRONMENTAL CONSTRUCTION SERVICES
HEAVY CONSTRUCTION / EXCAVATION
INDUSTRIAL SERVICES & CLEANING
EMERGENCY RESPONSE / SPECIAL PROJECTS
CONFINED SPACE ENTRY & RESCUE SERVICES

www.terrahidr.com | CCB# 101128





*"Keen observation is at
least as necessary as
penetrating analysis"*

Karl Terzaghi

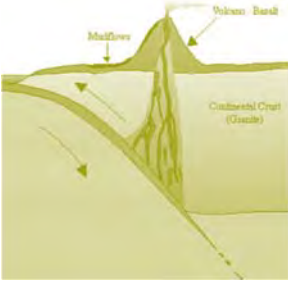


**Your Environmental,
Geotechnical
& Clean Water
Professionals**

253-604-4878

info@holtservicesinc.com

www.holtservicesinc.com



WHERE COMPLEX CHALLENGES MEET **QUALITY SOLUTIONS**

PBS is a trusted source of practical, sustainable solutions to environmental and engineering challenges—enabling projects to proceed and communities to grow and thrive.

Pictured: Vancouver Waterfront Redevelopment



11 LOCATIONS | **PBSUSA.COM**

Engineering (Geotechnical, Enviro. & Civil)
Environmental Services • Health & Safety
Natural Resources • Permitting • Surveying



*Providing Quality
Geophysical Services
since 1984*

EARTH DYNAMICS LLC

2284 NW. Thurman St.
Portland, OR 97210
(503) 227-7659
info@earthdyn.com

www.earthdyn.com

Engineering Geophysics:

- Seismic Refraction/Reflection
- Shearwave Velocity Studies
- Electrical Resistivity Profiling
- Ground Penetrating Radar
- Magnetics/Electromagnetics
- Gravity
- Marine Geophysics

Vibration & Noise Analysis:

- Remote Vibration Monitoring
- Real-time Frequency Analysis
- Construction Monitoring
- Demolition Monitoring
- Blast Design and Monitoring
- Pre-construction Surveys
- Sensitive Equipment Certification

Rock Mechanics:

- Uniaxial Compressive Strength
- Direct and Triaxial Shear Strength
- Direct and Indirect Tensile Strength
- Dynamic & Static Elastic Moduli
- Thermal Properties
- Density & Porosity
- Moisture Content





EARTH WATER

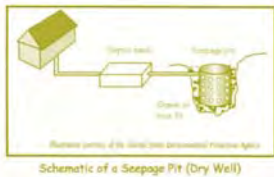
Geotechnical Engineering
Environmental Remediation
Water Resources
Stormwater
Data + Mapping

Portland
Seattle
Bainbridge Island
Bellingham
Wenatchee
Yakima



Aspect
CONSULTING

www.aspectconsulting.com
971.865.5890



HI-TECH Rockfall is a General Contractor that specializes in Rockfall Mitigation and has been the industry leader for over 18 years. Our Highly Trained & Skilled Employees provide us the Highest Safety Record in the Industry.



We Service Multiple Industries which include:

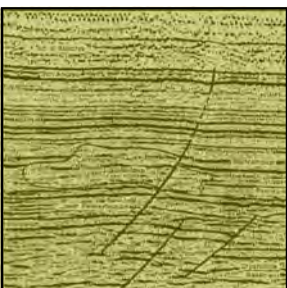
Government & Military	Highways
Mines & Quarries	Railroads
Commercial & Residential	Utilities

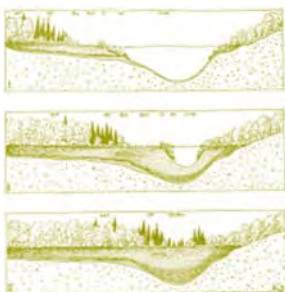
Products and Services include:

Highwall Stabilization	Wire Mesh Drapery
Rock Scaling	Rock Bolts
Rock Dowels	Shotcrete
Rockfall Barriers	Avalanche Nets
Instrumentation Installation	Rope Access Work

HI-TECH Rockfall Construction, Inc.
P.O. Box 674, Forest Grove, OR 97116

Office: (503) 357-6508
www.hitechrockfall.com

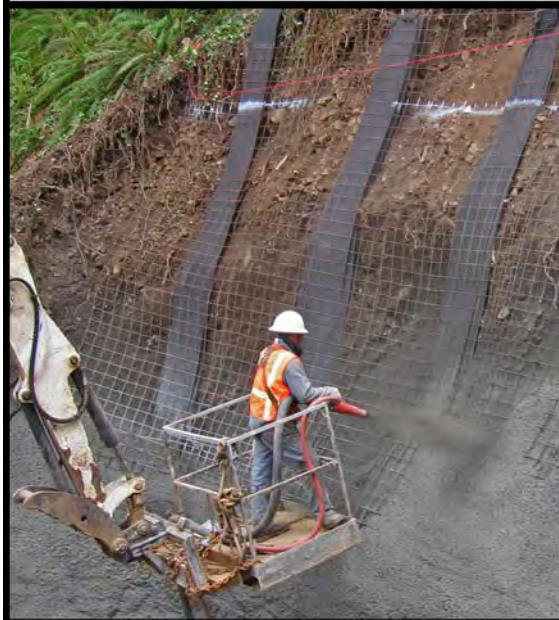
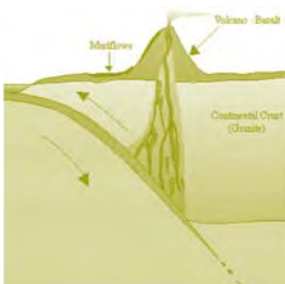




**SOIL and FOUNDATION
STABILIZATION SOLUTIONS**
in OREGON and WASHINGTON
503.649.8111 info@plisystems.com

- Drilled and Grouted Tie-Back Anchors
- Geotechnical Drilling Explorations
- Shoring (temporary & permanent)
- Drainage, Including Horizontal
- Helical Anchors & Piles
- Drilled Shafts (caissons)
- Limited Access Drilling
- Landslide Stabilization

- Elevator Jack Shafts
- Displacement Piles
- Wall Construction
- Sheet Pile Walls
- Injection Boring
- Underpinning
- Rock Anchors
- Rock Coring
- Dewatering
- Pile Driving
- Micropiles
- Shotcrete
- Soil Nails
- Grouting
- Pin Piles
- SPT





HGS HYATT GEOSCIENCES
GEOLOGY & GROUNDWATER SERVICES

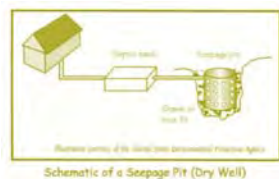
Environmental Geology / Hydrogeology / Groundwater Resources

Aquifer Characterization
Groundwater Supply Development
Water Rights Support

Environmental Assessments
Soil and Groundwater Investigations
Water Quality Analysis

Portland, Oregon
(503) 887-9323
ChrisHyatt@HyattGeo.com
www.HyattGeo.com

Certified Emerging Small Business (ESB)



Thanks For Supporting AEG

Aspect Consulting

Columbia Geotechnical

Cornforth Consultants

Federal Energy Regulatory Commission (FERC)

GRI

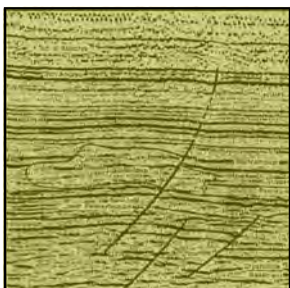
NACSE

Oregon Department of Transportation

OSU

PBS Engineering and Environmental

Portland State University



Chapter Officers & Committee Chairs



Chair:
Mark Swank
Aspect Consulting
markswank@comcast.net



Chair Elect:
Chris Humphrey
FERC
geohumphrey@yahoo.com



Treasurer:
Benjamin George
Cornforth Consultants, Inc.
bgeorge@cornforthconsultants.com



Secretary:
Michael Marshall
GRI
mmmarshall@gri.com



Past Chair:
Stephen Hay
Oregon Department of Transportation
stephen56362@gmail.com

Could Be
You ?

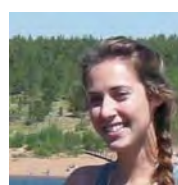


Program Chair:
Vacant

Field-Trip Chair:
Erin Dunbar
Geosyntec Consultants, Inc.
dunbar.erin@gmail.com



Membership Chair:
Ruth Wilmoth
Columbia Geotechnical, Inc.
ruthwilmoth@comcast.net



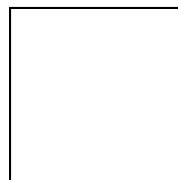
Legislature Chair:
Jennifer DiGiulio
National Energy Technology Laboratory,
U.S. Department of Energy
jennifer.digiulio@netl.doe.gov



Newsletter Editor:
Scott Braunsten
PBS Engineering and Environmental
scott.braunsten@pbsusa.com



Webpage Editor:
Matt Randall
PBS Engineering and Environmental
matt.randall@pbsusa.com



PSU Student Chapter President:
Andrew Trotter
Portland State University
atrotter@pdx.edu

The Oregon Chapter is also on
the web at

<http://www.aegoregon.org>

National AEG webpage:

<http://aegweb.org>

Subscribe to the newsletter by sending any e-mail to
aegoregon-subscribe@groups.electricmembers.net

The AEG Oregon Chapter Newsletter

The Association of Engineering Geologists (AEG) contributes to its members' professional success and the public welfare by providing leadership, advocacy, and applied research in environmental and engineering geology. AEG's values are based on the belief that its members have a responsibility to assume stewardship over their fields of expertise. AEG is the acknowledged international leader in environmental and engineering geology, and is greatly respected for its stewardship of the profession.

AEG OREGON CHAPTER NEWSLETTER is published monthly from September through May. Subscriptions are for members of AEG affiliated with the Oregon Chapter or other Chapters, and other interested people who have requested and paid a local subscription fee of \$10.00. E-mail subscriptions are free. News items are invited and should be sent to: Scott Braunsten, AEG Oregon Chapter Newsletter Editor, PBS Engineering and Environmental, 4412 SW Corbett Avenue, Portland, OR 97239, e-mail: scott.braunsten@pbsusa.com, phone (503) 417-7737. Electronic media is preferred. Deadline for submittal is the 25th of the month. Advertising: business card \$100/yr; ¼ page \$200/yr; ½ page \$350/yr; 1 page \$450/yr.

