

The Official

# AEG OREGON CHAPTER NEWSLETTER

<http://www.aegoregon.org>

## November Meeting Details

Tuesday, November 15<sup>th</sup>

Location: Old Market Pub  
6959 SW Multnomah Blvd  
Portland, Oregon

6:00 pm Social

6:45 pm Dinner

7:30 pm Presentation

Dinner: Salad and Pizza

**\$25 Dinner**

Exact Change Appreciated  
Students **FREE** with RSVP  
(\$5 if no RSVP)

## Reservations:

[RSVP@aegoregon.org](mailto:RSVP@aegoregon.org)

with "AEG Reservation" in  
the subject line by 4 pm  
Friday Nov 11<sup>th</sup>

There is a \$2 surcharge for  
those who do not reserve by  
the deadline

## Upcoming Meetings:

Dec 20<sup>th</sup> Bill Gates  
Jan 17<sup>th</sup> AEG/ASCE Meeting  
Feb 21<sup>st</sup> Andrea Goodwin  
Mar 21<sup>st</sup> TBD  
Apr 18<sup>th</sup> Tim Blackwood  
May 16<sup>th</sup> Scott Anderson and  
Student Poster Night



## Subsurface History of Portland

**Guest Speaker: Stuart Albright**

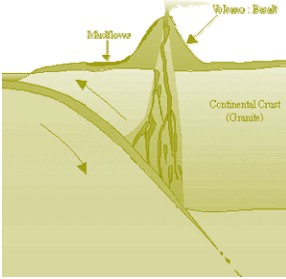
The majority of the Portland Metropolitan Area has been reshaped by man since the earliest days of habitation. This history of cutting and filling in Portland impacts most

projects constructed in the City. Stuart became interested in the subject through a series of office arguments at Rittenhouse, Zeman & Associates (RZA) in the mid-1980s.

The main subject was whether or not a water tunnel was bored through the West Hills (Stuart thinks not). After that, he began collecting photographs and maps related to the portions of Portland that had been extensively reshaped. This collection was aimed at someday developing a paper or presentation about the history of mass grading in the City. The material sat in various files and folders until the invention of scanners and PowerPoint, which allowed for development of a presentation with much less effort. He has given the presentation to numerous groups since 2008.

Stuart will provide examples of the historic documentation that is available through generally accessible sources such as the internet and the City of Portland Archives. Through these documents, Stuart will show some of the more dramatic examples (all completed before 1935) of how grading in the area changed Portland's topography. This will include histories of the people and politics that made the filling of large drainages a reality. He will present case studies of four of the more considerable examples of grading in the area including the filling of Guilds Lake, Marquam Gulch, Tanner Creek, and numerous drainages in Southeast Portland. Interspersed will be tidbits of Portland history that may not always have to do with site grading but are hopefully entertaining.

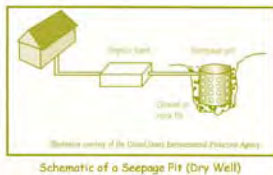





## Bio: Stuart Albright

Stuart Albright is a Principal Geotechnical Engineer with Apex Companies in Portland, Oregon. He has over 30 years of consulting experience in Oregon and Southwest Washington and is working through a long and, so far unsuccessful, process of retirement. Mr. Albright completed five years as a member of the Oregon State Board of Examiners for Engineering and Land Surveying, serving as President. He is also a past President of ACEC Oregon. He received his BSCE degree from Portland State University and his MSCE degree from Oregon State University.


It is important to note that Mr. Albright has always practiced with Engineering Geologists and has never himself practiced Engineering Geology. He has the utmost respect for Engineering Geologists. He is a native Oregonian and plans to live here (well, in Mosier anyway) for the rest of his hopefully long life.




## AEC is Hosting the Beverages



**Remedial Construction  
Treatment System Installation  
Stormwater Improvements  
Demolition and Deconstruction  
Tank and Fuel-Related Services  
Stream and Habitat Restoration**



[www.aeccllc.net](http://www.aeccllc.net)



AEC is a proud Service Disabled Veteran Owned Small Business (SDVOSB)

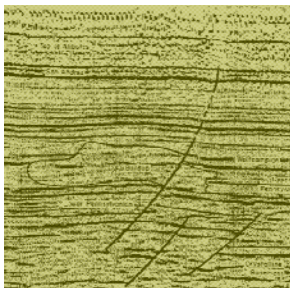
For more than fifteen years, AEC has provided a wide range of environmental contracting services for our government and private sector clients, including federal, state and local government agencies, petroleum companies and other commercial industries. Government and private sector service percentages are divided nearly equally and our services include fish and habitat improvement, stream improvement, underground tank removal and installation, contaminated soil remediation, building demolition, and historical deconstruction and salvage.

AEC is a CVE-Certified Service Disabled Veteran Owned Business (SDVOSB). In addition to senior management, many of our people have past military experience. We think this experience enhances our success with client communication, allows us attention to detail, and keeps our projects on-time and on-budget.

AEC maintains the proper contractor and specialty licenses to perform our services, and employee and work site health and safety practices are of the utmost importance. All AEC field personnel are OSHA 40-hour trained and maintain other certifications as required.

*"Keen observation is at least as necessary as penetrating analysis"*

*Karl Terzaghi*



## Message from the Chair

I hope everyone stayed safe during the mid-October windstorm and dry during the record setting October rainfall. As we enter the wet weather season I would like to remind everyone to reevaluate your preparedness for extreme weather both at home and work. We are employed in a profession that contains many natural and man-made hazards and it is imperative that we carefully evaluate these hazards each and every day.

Thanks to everyone who attended the October meeting. Once again we had a great turnout of students and professionals. A special thanks to Sunny Simpkins (Multnomah County Drainage District Planning Director) and Mike Meyer (Cornforth Consultants) for their presentation on the history, challenges, and future of Portland's Metropolitan Levee System. The system is located on the south shore of the Columbia River and protects a 12,000-acre area from flooding. I for one knew that we had a levee system but never realized the many economic resources that the levees protect from flooding. Sunny and Mike provided the audience with a detailed history of the system and the current evaluations to meet levee and floodplain regulations. Thanks again to Sunny and Mike!!

Our November speaker is Stuart Albright with Apex Companies located in Portland. Stuart will be discussing the subsurface history of Portland and how the majority of the Portland Metropolitan Area has been reshaped by man. He will show some of the more dramatic examples of how grading in the area has changed Portland's topography such as Guilds Lake and how geotechnical engineers and engineering geologists use this information for planning and interpreting their exploration programs. I am looking forward to learning more about what lies beneath the largest metro area in Oregon.

You still have one more opportunity on December 2nd to provide the Oregon State Board of Geologists Examiners (OSBGE) with comments regarding their continuing education (CE) proposal. Please plan to attend the Board's quarterly meeting and let your voice be heard. At this meeting the Board plans to decide if they will begin the process of seeking legislative approval.

I look forward to seeing you on Tuesday, November 15th at the Old Market Pub.

Stay safe out there,

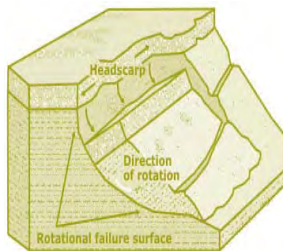
Stephen Hay, CEG

AEG Oregon Chapter Chair

## Announcements:

- Let Linda Mark, AEG Region 3 - Pacific Regional Director, know if you have any ideas for the Wednesday evening Special Event for the AEG Annual Meeting in Portland in 2020.
- National AEG is looking for more volunteers to serve on committees, so if you might be interested in serving on a committee, please either contact that committee or Linda Mark.
- There are a number of upcoming AEG Professional Forums/Conferences that you may be interested in attending in the coming months/years:
  - December 15, 2016 - Naturally Occurring Asbestos Symposium, Oakland, CA
  - June 4-8, 2017 - 3rd North American Landslide Symposium, Roanoke, VA
  - 2017 - Coastal Processes - Dauphin Island, AL
  - May 2018 - Geologic Hazards in the Pacific Northwest, Seattle, WA - Kathy Troost is looking for volunteers to help plan this conference
  - September 12-20, 2020 - AEG Annual Meeting, Portland, OR





## Message from the Regional Director

I am honored and thrilled to be your new Regional Director. I look forward to serving each and every one of you and AEG as a whole. I would like to thank everyone who took the time to vote.

As your new Regional Director, I will be holding quarterly Regional Business Meetings with the boards of the Oregon Chapter, Puget Sound Chapter, and Alaska Chapter, as well as anyone else who is interested in attending. We held the first Regional Business Meeting on September 14. For this first meeting, we focused on what is working well, and what could be improved, in each of the Chapters in our Region, as well as how we can work together as a Region for the benefit of our members. Our next Regional Business Meeting will be held in December - please watch for an announcement about it.

I was very happy to see so many people from the Pacific Region attending the AEG Annual Meeting in Kona. In addition to enjoying the technical sessions, I also took this opportunity to meet in person with members of the Puget Sound Chapter and Alaska Chapter boards who attended the meeting.

I attended the AEG National Board of Directors (BOD) Meeting as your Regional Director, which was the first BOD Meeting under the new Governance Structure. As most of you know, AEG is now governed by 11 Regional Directors plus the Executive Council, with each Regional Director representing multiple Chapters. I was very pleased that for the first time in a long time, 100% of the BOD were in attendance. The new BOD is enthusiastic and has an increased level of engagement, which bodes well for AEG.

Major outcomes of the National BOD Meeting include:

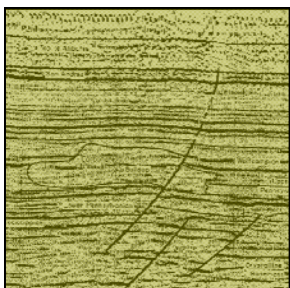
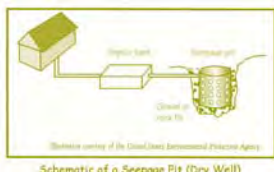
- All AEG Policies & Procedures have now been updated (primarily housekeeping changes)
- Regional Director roles, responsibilities, and goals were discussed
- Funding for Regional Director travel will remain unchanged for now, and this topic will be brought up again at the Mid-Year BOD Meeting in May
- A member of the Executive Council will become a signatory on all Chapter bank accounts; Yolanda Natividad will be reaching out to all Chapter Chairs, one-by-one, to facilitate this change
- Previously, \$10 of all members' fees went to the Professional Licensure Support Fund (PLSF). At the request of the Northern and Southern California Regions, the BOD voted to have only \$5 of California member's fees go to the PLSF, and to have the other \$5 of California member's fees that used to go to the PLSF instead go towards paying for the California lobbyist; \$10 of all non-California member's fees will continue to go to the PLSF. The justification for this change is that a threat to professional licensure in California is ultimately a threat to professional licensure in all states, so by helping California to support professional licensure (via funding of their lobbyist), it helps professional licensure status in all states. However, this change means that about \$2,620 less per year will go into the PLSF, and it represents a significant departure from how the PLSF was intended to be funded and used. Both of these issues concerned me enough that I voted against this measure, and I encouraged the Northern and Southern California Regions to find another way to fund their lobbyist, as they have done in the past.

Over the next few months, I will also be looking for members who might be potentially interested in starting their own Chapter - if you have an interest in a new AEG Chapter starting in your hometown, please let me know. If you have any suggestions, questions, or concerns, please don't hesitate to contact me.

Thank you,

Linda Mark, RG

AEG Region 3 – Pacific Regional Director



*"The earth is large and  
old enough to teach us  
modesty."*

*Hans Cloos*



## Quality solutions for engineering and environmental challenges.



### 35 Years of Trusted Service

Engineering (Geotechnical, Environmental & Civil)  
Environmental & Planning Services  
Health & Safety  
Natural Resources & Permitting  
Surveying

📍 9 Northwest Offices

☎ (888) 248.1939

🌐 [pbsenv.com](http://pbsenv.com)

🐦 [twitter.com/pbsenv](https://twitter.com/pbsenv)



**GEOPHYSICAL SURVEYING**  
for environmental  
and geotechnical  
applications



503.501.7846

[nikos@pacificgeophysics.com](mailto:nikos@pacificgeophysics.com)

[www.pacificgeophysics.com](http://www.pacificgeophysics.com)

**TERRA HYDR INC.**

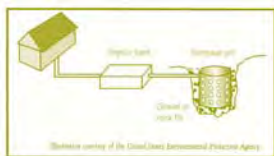
(503) 625-4000  
24 Hour Service

PO Box 3616  
Portland Or. 97208

*Proudly serving the  
region's premiere  
consultants and  
quality conscious  
industrial clients*

ENVIRONMENTAL CONSTRUCTION SERVICES  
HEAVY CONSTRUCTION / EXCAVATION  
INDUSTRIAL SERVICES & CLEANING  
EMERGENCY RESPONSE / SPECIAL PROJECTS  
CONFINED SPACE ENTRY & RESCUE SERVICES

[www.terrahidr.com](http://www.terrahidr.com) | CCB# 101128



(253) 604-4878

[info@holtservicesinc.com](mailto:info@holtservicesinc.com)

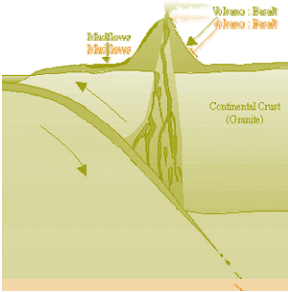
[www.holtservicesinc.com](http://www.holtservicesinc.com)

## Core Values:



*"Keen observation is at  
least as necessary as  
penetrating analysis"*

*Karl Terzaghi*



## HI-TECH ROCKFALL CONSTRUCTION INC.

HI-TECH Rockfall is a General Contractor that specializes in Rockfall Mitigation and has been the industry leader for over 18 years. Our Highly Trained & Skilled Employees provide us the Highest Safety Record in the Industry.



We Service Multiple Industries which include:

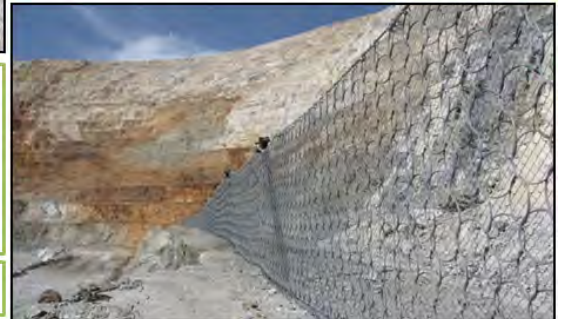
<b>Government &amp; Military</b>	<b>Highways</b>
<b>Mines &amp; Quarries</b>	<b>Railroads</b>
<b>Commercial &amp; Residential</b>	<b>Utilities</b>

Products and Services include:

<b>Highwall Stabilization</b>	<b>Wire Mesh Drapery</b>
<b>Rock Scaling</b>	<b>Rock Bolts</b>
<b>Rock Dowels</b>	<b>Shotcrete</b>
<b>Rockfall Barriers</b>	<b>Avalanche Nets</b>
<b>Instrumentation Installation</b>	<b>Rope Access Work</b>

HI-TECH Rockfall Construction, Inc.  
P.O. Box 674, Forest Grove, OR 97116

Office: (503) 357-6508  
[www.hitechrockfall.com](http://www.hitechrockfall.com)



## TECCO® SYSTEM<sup>3</sup> – Your slopes made stable

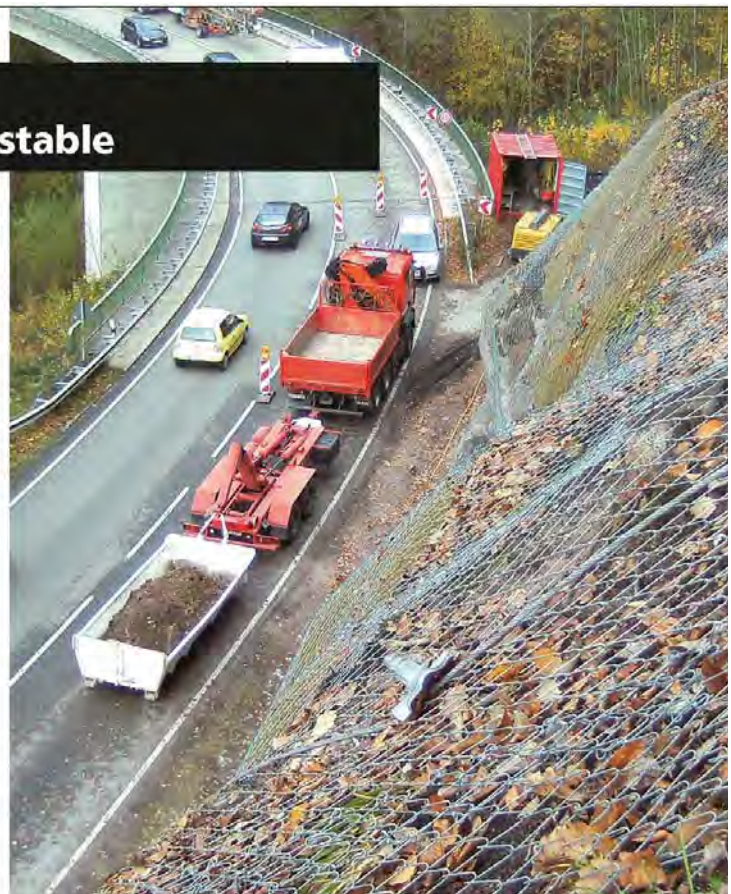
- TECCO® SYSTEM<sup>3</sup> can be optimized depending on the subsoil with several mesh types
- meshes made of 2 mm, 3 mm and 4 mm diameter high-tensile steel wire
- optimization of anchor spacing thanks to two new spike plate sizes
- RUVOLUM® dimensioning software based on large-scale field and model tests
- small CO<sub>2</sub> footprint and option to cover with natural vegetation

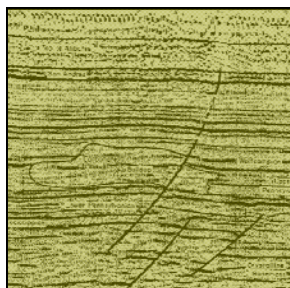
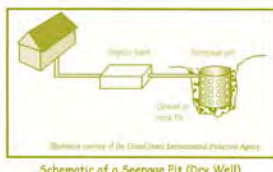


Scan and watch our movie on  
[www.geobrugg.com/youtube/](http://www.geobrugg.com/youtube/)  
TECCO-fullscale



**Geobrugg North America, LLC**  
Tim Shevlin, PG • Northwestern USA  
Phone (503) 423-7258 • Fax (505) 771-4081  
[tim.shevlin@geobrugg.com](mailto:tim.shevlin@geobrugg.com)  
[www.geobrugg.com](http://www.geobrugg.com)





EARTH WATER

Geotechnical Engineering  
Environmental Remediation  
Water Resources

BAINBRIDGE ISLAND  
BELLINGHAM  
PORTLAND  
SEATTLE  
WENATCHEE  
YAKIMA

**Aspect**  
CONSULTING

[www.aspectconsulting.com](http://www.aspectconsulting.com)

**EARTH DYNAMICS**

2284 NW. Thurman St.  
Portland, OR 97210  
(503) 227-7659  
[info@earthdyn.com](mailto:info@earthdyn.com)

[www.earthdyn.com](http://www.earthdyn.com)

**Engineering Geophysics:**

- ♦ Seismic Refraction/Reflection
- ♦ Shearwave Velocity Studies
- ♦ Electrical Resistivity Profiling
- ♦ Ground Penetrating Radar
- ♦ Magnetics/Electromagnetics
- ♦ Gravity
- ♦ Marine Geophysics

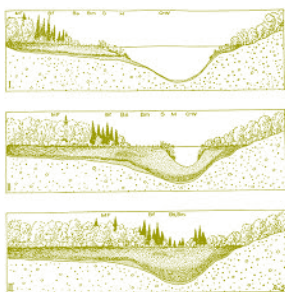
**Vibration & Noise Analysis:**

- ♦ Remote Vibration Monitoring
- ♦ Real-time Frequency Analysis
- ♦ Construction Monitoring
- ♦ Demolition Monitoring
- ♦ Blast Design and Monitoring
- ♦ Pre-construction Surveys
- ♦ Sensitive Equipment Certification

**Rock Mechanics:**

- ♦ Uniaxial Compressive Strength
- ♦ Direct and Traixial Shear Strength
- ♦ Direct and Indirect Tensile Strength
- ♦ Dynamic & Static Elastic Moduli
- ♦ Thermal Properties
- ♦ Density & Porosity
- ♦ Moisture Content

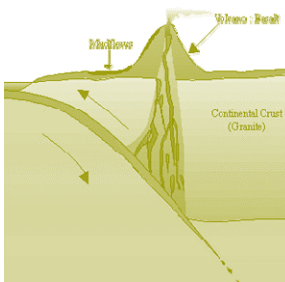




**SOIL and FOUNDATION  
STABILIZATION SOLUTIONS**  
in OREGON and WASHINGTON  
503.649.8111 [info@plisystems.com](mailto:info@plisystems.com)

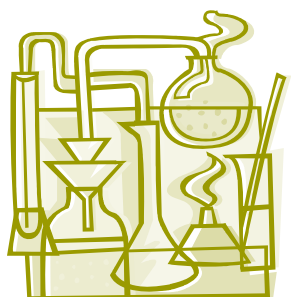
- Drilled and Grouted Tie-Back Anchors
- Geotechnical Drilling Explorations
- Shoring (temporary & permanent)
- Drainage, Including Horizontal
- Helical Anchors & Piles
- Drilled Shafts (caissons)
- Limited Access Drilling
- Landslide Stabilization

- Elevator Jack Shafts
- Displacement Piles
- Wall Construction
- Sheet Pile Walls
- Injection Boring
- Underpinning
- Rock Anchors
- Rock Coring
- Dewatering
- Pile Driving
- Micropiles
- Shotcrete
- Soil Nails
- Grouting
- Pin Piles
- SPT



*"Keen observation is at  
least as necessary as  
penetrating analysis"*

*Karl Terzaghi*



**CASCADE**  
DRILLING | TECHNICAL SERVICES

**Environmental Geotechnical Construction**

Roto Sonic	Vac Hole Clearing	Freeze Wall / Grout Curtain
Air Rotary	Well Drilling and Installation	Geoconstruction
Mud Rotary	Well Development	MIP
Rock Coring	Aquifer Testing	HPT
Hollow Stem Auger	Instrumentation	CPT
Direct Push	Geotechnical Testing	IDW Management
Chem-Ox		

[www.cascade-env.com](http://www.cascade-env.com)

## Thanks For Supporting AEG

Apex Companies, LLC

Aspect Consulting

Columbia Geotechnical

Cornforth Consultants

Federal Energy Regulatory Commission (FERC)

GRI

NACSE

Oregon Department of Transportation

OSU

PBS Engineering and Environmental

Portland State University

PRISM Climate Group

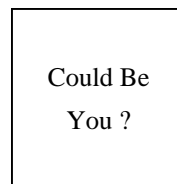
## Chapter Officers & Committee Chairs



Chair:  
Stephen Hay  
Oregon Department of Transportation  
[stephen56362@gmail.com](mailto:stephen56362@gmail.com)



Program Chair:  
Michael Marshall  
GRI  
[mmarshall@gri.com](mailto:mmarshall@gri.com)



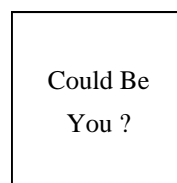
Legislature Chair:  
Vacant



Chair Elect:  
Mark Swank  
Aspect Consulting  
[markswank@comcast.net](mailto:markswank@comcast.net)



Field-Trip Chair:  
Erin Dunbar  
[dunbar.erin@gmail.com](mailto:dunbar.erin@gmail.com)



Visiting Professional Program (VPP) Chair:  
Vacant



Treasurer:  
Chris Humphrey  
FERC  
[geohumphrey@yahoo.com](mailto:geohumphrey@yahoo.com)



Membership Chair:  
Ruth Wilmoth  
Columbia Geotechnical, Inc.  
[ruthwilmoth@comcast.net](mailto:ruthwilmoth@comcast.net)



Newsletter Editor:  
Scott Braunsten  
PBS Engineering and Environmental  
[scott.braunsten@pbsenv.com](mailto:scott.braunsten@pbsenv.com)



Secretary:  
Benjamin George  
Cornforth Consultants, Inc.  
[bgeorge@cornforthconsultants.com](mailto:bgeorge@cornforthconsultants.com)

**The Oregon Chapter is also on  
the web at**

**<http://www.aegoregon.org>**

**National AEG webpage:**

**<http://aegweb.org>**

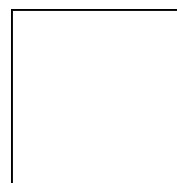


Webpage Editor:  
Keith Olson  
PRISM Climate Group, NACSE,  
OSU  
[olsonke@nacse.org](mailto:olsonke@nacse.org)



Past Chair:  
Adam Reese  
Apex Companies, LLC  
[AReese@apexcos.com](mailto:AReese@apexcos.com)

Subscribe to the newsletter by sending any e-mail to  
[aegoregon-subscribe@groups.electricmembers.net](mailto:aegoregon-subscribe@groups.electricmembers.net)



PSU Student Chapter President:  
Portland State University

## The AEG Oregon Chapter Newsletter

The Association of Engineering Geologists (AEG) contributes to its members' professional success and the public welfare by providing leadership, advocacy, and applied research in environmental and engineering geology. AEG's values are based on the belief that its members have a responsibility to assume stewardship over their fields of expertise. AEG is the acknowledged international leader in environmental and engineering geology, and is greatly respected for its stewardship of the profession.

AEG OREGON CHAPTER NEWSLETTER is published monthly from September through May. Subscriptions are for members of AEG affiliated with the Oregon Chapter or other Chapters, and other interested people who have requested and paid a local subscription fee of \$10.00. E-mail subscriptions are free. News items are invited and should be sent to: Scott Braunsten, AEG Oregon Chapter Newsletter Editor, PBS Engineering and Environmental, 4412 SW Corbett Avenue, Portland, OR 97239, e-mail: [scott.braunsten@pbsenv.com](mailto:scott.braunsten@pbsenv.com), phone (503) 417-7737. Electronic media is preferred. Deadline for submittal is the 25th of the month. Advertising: business card \$100/yr; ¼ page \$200/yr; ½ page \$350/yr; 1 page \$450/yr.

