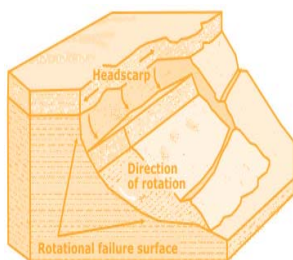




The Official

OREGON SECTION AEG NEWSLETTER

<http://www.aegoregon.org>



Upcoming Meetings:

Please contact the Oregon Section board with ideas, presenters, and topics for next season.



BALLOT FOR ELECTION OF OFFICERS AEG OREGON SECTION 2015-2016

Please indicate your vote by checking the box next to the candidate's name for each office or by writing in a name. Your ballot should be sent to Linda Mark (Section Past Chair) at: lmark@esassoc.com or Linda Mark, c/o ESA Vigil-Agrimis, 819 SE Morrison Street, Suite 310, Portland, OR 97214. Please return by July 10, 2015. The new slate of officers will be announced at the September meeting.



CHAIRPERSON

Adam Reese

Adam has been active with Oregon AEG since 2007. He received BS and MS degrees in Geoenvironmental Studies from Shippensburg University of Pennsylvania and completed post-graduate studies in environmental and engineering geology at Portland State University. He has 14 years of environmental and geotechnical consulting experience, primarily in the Pacific Northwest. For the past eight years, he has worked for Apex Companies (formerly Ash Creek Associates) in Portland. He is a Registered Geologist and Certified Engineering Geologist in Oregon and Washington.

(write in line_____)



CHAIR-ELECT

Stephen Hay

Stephen has been active with Oregon AEG since 2007. He received his BS degrees in Geology and Geography from Portland State University and has been working as an engineering geologist for 20 years. For the past 16 years he has been employed with the Oregon Department of Transportation and is responsible for transportation project design, quarry development, landslide and rockfall geotechnical emergency response and hazardous materials emergency response. He is a registered Geologist and Certified Engineering Geologist in Oregon and Washington.

(write in line_____)



TREASURER

Mark Swank

Mark has been a member of AEG since 2005 and active in Oregon since 2009. He received his BS degree in Soil Science from Cal Poly San Luis Obispo and his MS degree in Geology from San Jose State. He has been working as an environmental scientist and geologist for 13 years. For the past year he has been employed with PBS Engineering & Environmental and is currently the geotechnical group's Senior Engineering Geologist. He is a Registered Geologist and Certified Engineering Geologist in Oregon and Washington.

(write in line_____)



SECRETARY

Christopher Humphrey

Chris has been active with Oregon AEG since 1993, initially as a PSU student member then later as a professional. He received his BS and MS in Geology from Portland State University. He has over 20 years of professional experience working in the field of engineering geology, specializing in geologic hazards, geomorphology and geotechnics. For 15 years, Chris worked as a consulting engineering geologist with H.G. Schlicker & Associates, Inc. Since 2009, he has worked for the U.S. Army Corps of Engineer in their Portland Geotechnical Design Section. From 2005 to 2011, Chris served as a Board Member with the Oregon State Board of Geologist Examiners. He is a Registered Geologist and Certified Engineering Geologist in Oregon and Washington.

(write in line_____)



PITTSBURGH, PA | SEPTEMBER 19-26, 2015

Below the steep slopes of Mount Washington created by three great rivers, the City of Pittsburgh blends its industrial heritage with its forward focus on technology. Throughout this dynamic urban landscape, past and present collide in land use, environmental impacts, and shifting economic forces. The AEG 2015 Annual Meeting Planning Committee invites you to join us for the "Conference at the Confluence".

WYNDHAM GRAND DOWNTOWN



Discover the 90 distinct neighborhoods of Pittsburgh Pennsylvania when you stay at the centrally located Wyndham Grand Pittsburgh Downtown.

The hotel is located in the Central Business District, also known as the Golden Triangle, at the meeting of the Allegheny and Monongahela Rivers to form the Ohio River. Where soaring skyscrapers and Pittsburgh's famous three rivers meet, an upscale hotel experience awaits in downtown.



SPONSORSHIP & EXHIBITOR OPPORTUNITIES

Event sponsorship is effective advertising that builds lasting recognition and good will for your company. We anticipate over 500 professional registrants at AEG2015 in Pittsburgh! We also have a brand new, fully interactive mobile app that provides even more sponsorship opportunities, so be sure to check it out!

NEW!
Cutting edge
interactive app.
Leave the paper behind
and don't miss
a thing!

FIELD TRIPS, GUEST TOURS AND SPECIAL EVENTS

We have an exciting lineup of trips, tours and a very special event this year, an evening aboard the Gateway Clipper. Join us for a reception cruise and see the spectacular city skyline as the sun sets on the three rivers.

See our website for complete details:
www.aegannualmeeting.org

CALL FOR ABSTRACTS

(Oral and Poster Presentations)

Do not miss this opportunity to provide an oral or poster presentation at this year's meeting!

Abstract submission deadline is May 1, 2015

To submit an abstract go to:

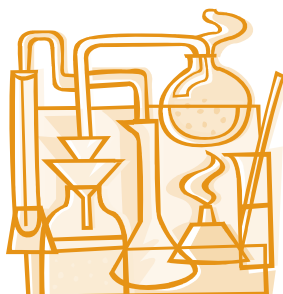
www.aegannualmeeting.org

Username: AEG

Password: Pittsburgh2015

(DO NOT USE YOUR AEG MEMBERSHIP LOGIN)





HI-TECH ROCKFALL CONSTRUCTION INC.

HI-TECH Rockfall is a General Contractor that specializes in Rockfall Mitigation and has been the industry leader for over 18 years. Our Highly Trained & Skilled Employees provide us the Highest Safety Record in the Industry.



We Service Multiple Industries which include:

Government & Military	Highways
Mines & Quarries	Railroads
Commercial & Residential	Utilities

Products and Services include:

Highwall Stabilization	Wire Mesh Drapery
Rock Scaling	Rock Bolts
Rock Dowels	Shotcrete
Rockfall Barriers	Avalanche Nets
Instrumentation Installation	Rope Access Work

HI-TECH Rockfall Construction, Inc.
P.O. Box 674, Forest Grove, OR 97116

Office: (503) 357-6508
www.hitechrockfall.com



Schematic of a Seepage Pit (Dry Well)



EARTH DYNAMICS

2284 NW. Thurman St.
Portland, OR 97210
(503) 227-7659
info@earthdyn.com

www.earthdyn.com

Providing Quality
Geophysical Services
since 1984

Engineering Geophysics:

- ♦ Seismic Refraction/Reflection
- ♦ Shearwave Velocity Studies
- ♦ Electrical Resistivity Profiling
- ♦ Ground Penetrating Radar
- ♦ Magnetics/Electromagnetics
- ♦ Gravity
- ♦ Marine Geophysics

Vibration & Noise Analysis:

- ♦ Remote Vibration Monitoring
- ♦ Real-time Frequency Analysis
- ♦ Construction Monitoring
- ♦ Demolition Monitoring
- ♦ Blast Design and Monitoring
- ♦ Pre-construction Surveys
- ♦ Sensitive Equipment Certification

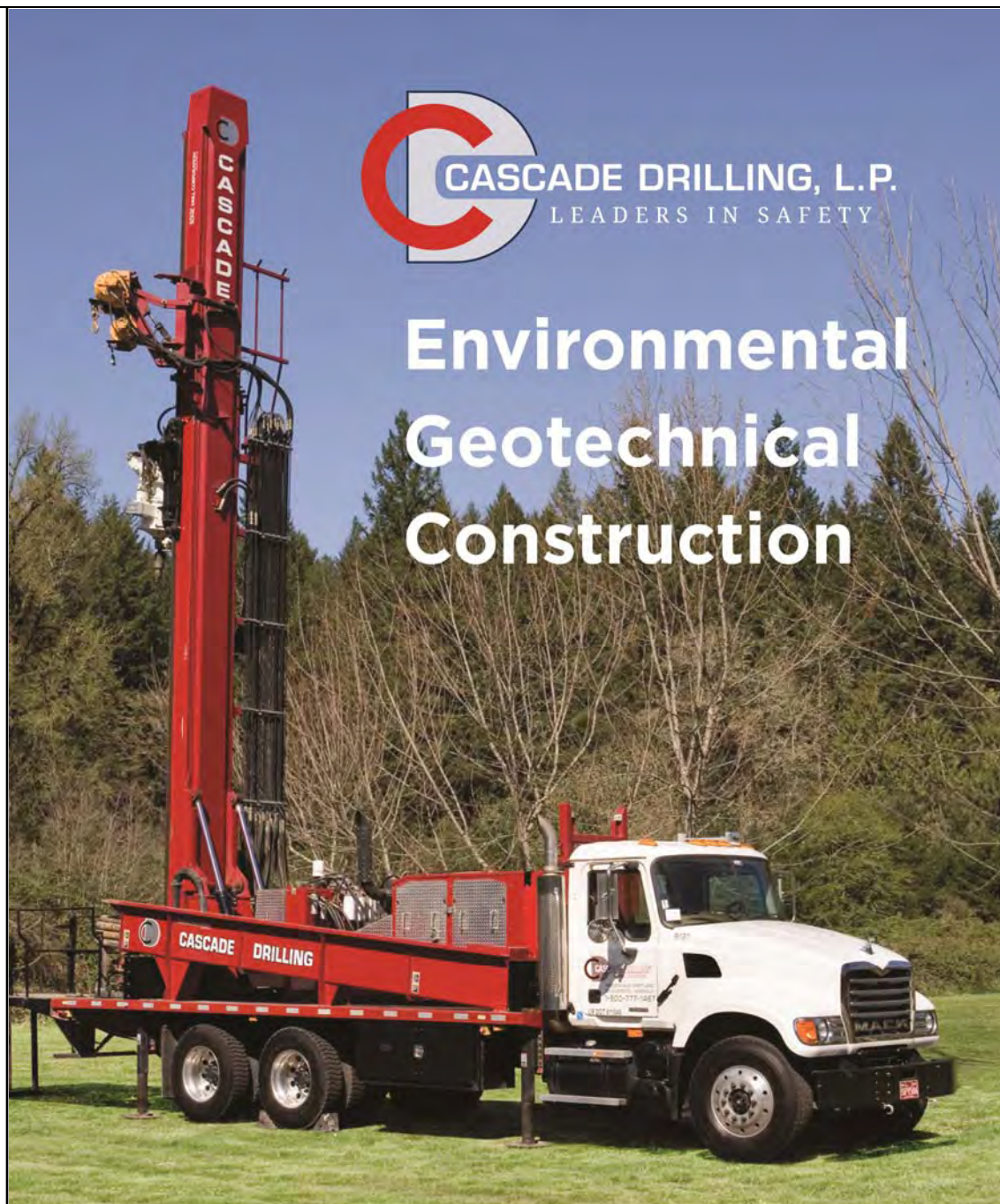
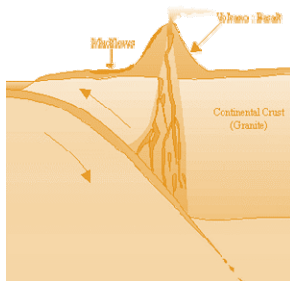
Rock Mechanics:

- ♦ Uniaxial Compressive Strength
- ♦ Direct and Triaxial Shear Strength
- ♦ Direct and Indirect Tensile Strength
- ♦ Dynamic & Static Elastic Moduli
- ♦ Thermal Properties
- ♦ Density & Porosity
- ♦ Moisture Content



*"Keen observation is at
least as necessary as
penetrating analysis"*

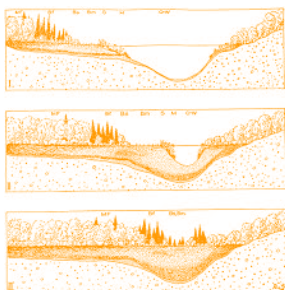
Karl Terzaghi



Environmental Geotechnical Construction

- Roto Sonic
- Air Rotary
- Mud Rotary
- Rock Coring
- Hollow Stem Auger
- Direct Push
- Chem-Ox
- Vac Hole Clearing
- Well Drilling and Installation
- Well Development
- Aquifer Testing
- Instrumentation
- Geotechnical Testing
- Freeze Wall / Grout Curtain
- Geoconstruction
- MIP
- HPT
- CPT
- IDW Management

www.cascadedrilling.com



TECCO® SYSTEM³ – Your slopes made stable

- TECCO® SYSTEM³ can be optimized depending on the subsoil with several mesh types
- meshes made of 2 mm, 3 mm and 4 mm diameter high-tensile steel wire
- optimization of anchor spacing thanks to two new spike plate sizes
- RUVOLUM® dimensioning software based on large-scale field and model tests
- small CO₂ footprint and option to cover with natural vegetation



Scan and watch our movie on
[www.geobrugg.com/youtube/](http://www.geobrugg.com/youtube/TECCO-fullscale)
TECCO-fullscale



Geobrugg North America, LLC
Tim Shevlin, PG • Northwestern USA
Phone (503) 423-7258 • Fax (505) 771-4081
tim.shevlin@geobrugg.com
www.geobrugg.com



Western States Soil Conservation, Inc.

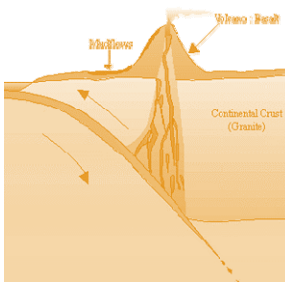
There is no limit to the depths we will go!

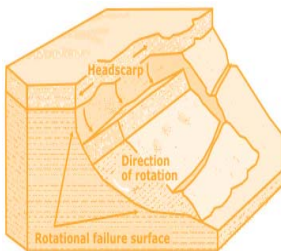


Geotechnical & Environmental Drilling Services

3100 Schmidt Ln • PO BOX 128 • Hubbard, OR 97032
(503) 982-1777 Office • (503) 982-8220 Fax

westernstates@centurytel.net • www.westernstatesoil.com

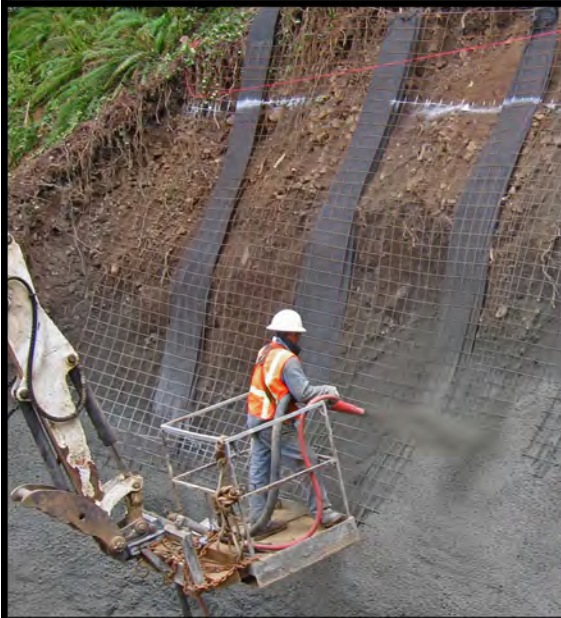
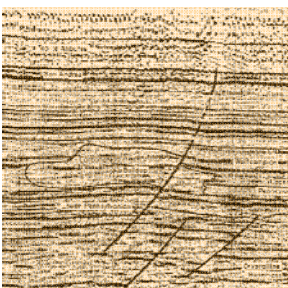


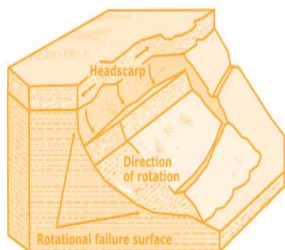
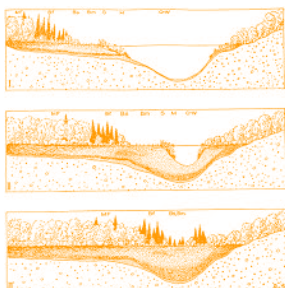


**SOIL and FOUNDATION
STABILIZATION SOLUTIONS**
in OREGON and WASHINGTON
503.649.8111 info@plisystems.com

- Drilled and Grouted Tie-Back Anchors
- Geotechnical Drilling Explorations
- Shoring (temporary & permanent)
- Drainage, Including Horizontal
- Helical Anchors & Piles
- Drilled Shafts (caissons)
- Limited Access Drilling
- Landslide Stabilization

- Elevator Jack Shafts
- Displacement Piles
- Wall Construction
- Sheet Pile Walls
- Injection Boring
- Underpinning
- Rock Anchors
- Rock Coring
- Dewatering
- Pile Driving
- Micropiles
- Shotcrete
- Soil Nails
- Grouting
- Pin Piles
- SPT





ENVIRONMENTAL & EXPLORATION GEOPHYSICS

22323 East Wild Fern Lane, Brightwood, Oregon 97011
PH (503) 622-0154 FAX (503) 622-0526

SUBSURFACE MAPPING SURVEYS

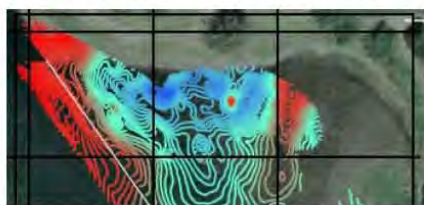
WEB <http://www.geopotential.biz/>
E-MAIL GeoPotential@geopotential.biz



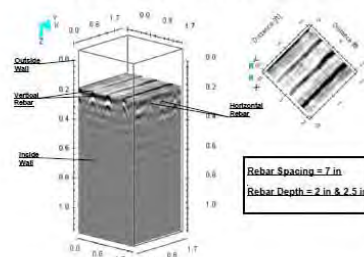
MAGNETOMETER & ELECTROMAGNETIC SURVEYS

GRAVITY SURVEYS

RESISTIVITY SURVEYS



3D GROUND PENETRATING RADAR SURVEYS



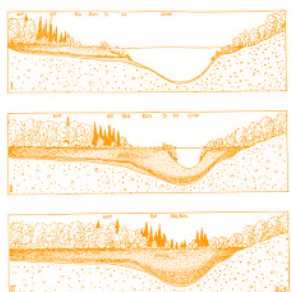
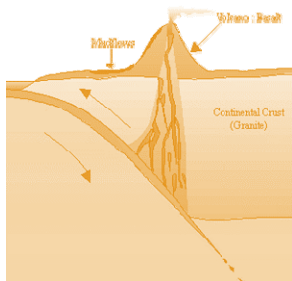
Subsurfacedrill@aol.com

P.O. BOX 1904 • NORTH PLAINS, OREGON • 97133
Ph: (503) 647-0636 Fax: (503) 647-0639



*"The earth is large and
old enough to teach us
modesty."*

Hans Cloos



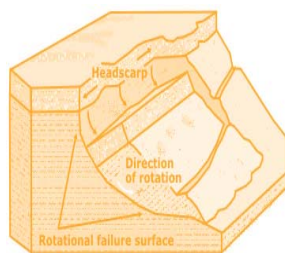
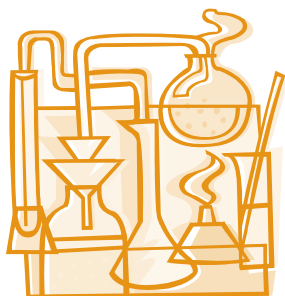
(253) 604-4878

info@holtservicesinc.com

www.holtservicesinc.com

Core Values:






ESA VIGIL-AGRIMIS

Restoration and Mitigation
Environmental Studies
Civil Engineering
Landscape Architecture
Permitting and Compliance

vigil-agrimis.com

TERRA HYDR INC.

(503) 625-4000
24 Hour Service

PO Box 3616
Portland Or. 97208

*Proudly serving the
region's premiere
consultants and
quality conscious
industrial clients*

ENVIRONMENTAL CONSTRUCTION SERVICES
HEAVY CONSTRUCTION / EXCAVATION
INDUSTRIAL SERVICES & CLEANING
EMERGENCY RESPONSE / SPECIAL PROJECTS
CONFINED SPACE ENTRY & RESCUE SERVICES

www.terrahidr.com | CCB# 101128

PBS Engineering + Environmental

ENVIRONMENTAL SOLUTIONS



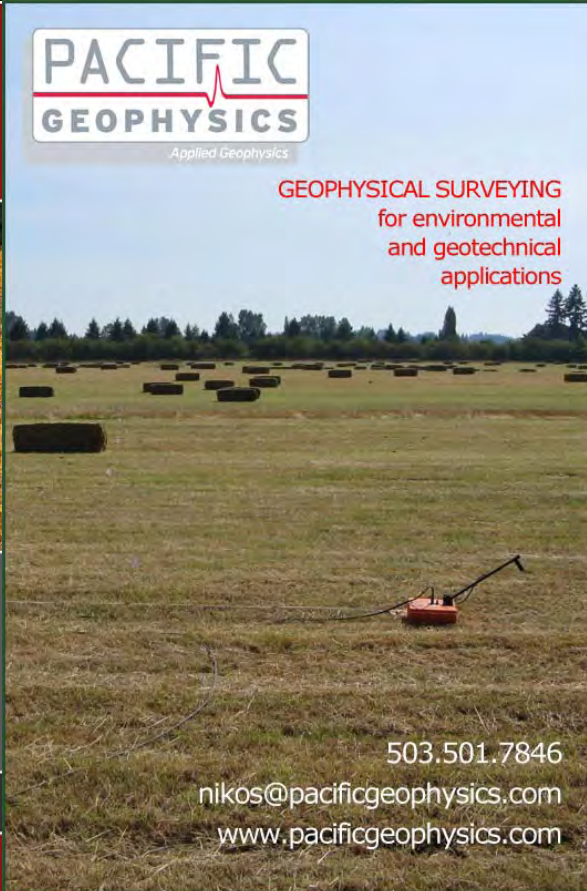
- Environmental Services
- Engineering
- Health and Safety
- Natural Resources

8 NORTHWEST LOCATIONS

pbsenv.com

PACIFIC GEOPHYSICS
Applied Geophysics

GEOPHYSICAL SURVEYING
for environmental
and geotechnical
applications



503.501.7846
nikos@pacificgeophysics.com
www.pacificgeophysics.com

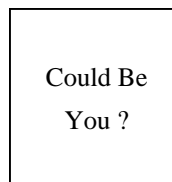
Section Officers & Committee Chairs



Chair:
Linda Mark
ESA Vigil-Agrimis
lmark@esassoc.com



Program Chair:
Michael Marshall
GRI
mmarshall@gri.com



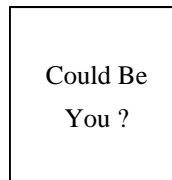
Legislature Chair:
Vacant



Chair Elect:
Adam Reese
Apex Companies, LLC
AReese@apexcos.com



Field-Trip Chair:
Erin Dunbar
dunbar.erin@gmail.com



Visiting Professional Program (VPP) Chair:
Vacant



Treasurer:
Stephen Hay
Oregon Department of Transportation
Stephen.HAY@odot.state.or.us



Membership Chair:
Ruth Wilmoth
Columbia Geotechnical, Inc.
ruthwilmoth@comcast.net



Newsletter Editor:
Scott Braunsten
PBS Engineering and Environmental
scott.braunsten@pbsenv.com



Secretary:
Mark Swank
PBS Engineering and Environmental
mark.swank@pbsenv.com

**The Oregon Section is also on
the web at
<http://www.aegoregon.org>
National AEG webpage:
<http://aegweb.org>**



Webpage Editor:
Keith Olson
PRISM Climate Group, NACSE, OSU
olsonke@nacse.org



Past Chair:
Darren Beckstrand
Cornforth Consultants
dbeckstrand@cornforthconsultants.com

Subscribe to the newsletter by sending any e-mail to
aegoregon-subscribe@groups.electricembers.net



PSU Student Chapter President:
Dougal Hansen
Portland State University
dougal@pdx.edu

Thanks For Supporting AEG

Apex Companies, LLC, Columbia Geotechnical, Cornforth Consultants, ESA Vigil-Agrimis, GRI, Oregon Department of Transportation, PBS Engineering and Environmental, Portland State University, PRISM Climate Group, NACSE, OSU

The Oregon Section Newsletter

OREGON SECTION AEG NEWSLETTER is published monthly from September through May. Subscriptions are for members of AEG affiliated with the Oregon Section or other Sections, and other interested people who have requested and paid a local subscription fee of \$10.00. E-mail subscriptions are free. News items are invited and should be sent to: Scott Braunsten, OR Section AEG Newsletter Editor, PBS Engineering and Environmental, 4412 SW Corbett Avenue, Portland, OR 97239, e-mail: scott.braunsten@pbsenv.com, phone (503) 417-7737. Electronic media is preferred. Deadline for submittal is the 25th of the month. Advertising: business card \$100/yr; ¼ page \$200/yr; ½ page \$350/yr; 1 page \$450/yr. Please notify Scott if you have a change to your email or mailing address.



The Association of Engineering Geologists (AEG) contributes to its members' professional success and the public welfare by providing leadership, advocacy, and applied research in environmental and engineering geology. AEG's values are based on the belief that its members have a responsibility to assume stewardship over their fields of expertise. AEG is the acknowledged international leader in environmental and engineering geology, and is greatly respected for its stewardship of the profession.