



The Official

# OREGON SECTION AEG NEWSLETTER

<http://www.aegoregon.org>

## April Meeting Details

Tuesday, April 16<sup>th</sup>

Location: Old Market Pub

6959 SW Multnomah

Portland, Oregon

6:00 pm Social

7:00 pm Dinner

Presentations throughout the night

Dinner: Pizza & Salad

\$20 Dinner (\$5 Students)

### Reservations:

[mwegner@cornforthconsultants.com](mailto:mwegner@cornforthconsultants.com)  
with "AEG Reservation" in  
the subject line or 971-222-  
2047 by 4pm Thur. Apr. 11

There is a \$2 surcharge for  
those who do not reserve by  
the deadline.

### Upcoming Meetings:

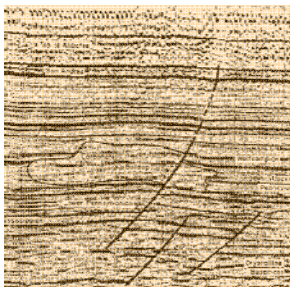
May 14<sup>th</sup> James McCaplin



## The April Meeting is the Annual Student Night!

- *Meteorite identification: thin sections, optical microscopy, geo-spatial software, and statistical analysis* – Jon Barnes, Department of Geology, Portland State University
- *Glacial Geology of the Idyllwild-Pine Cove Region of the San Jacinto Mountains, California* – Steven Bernsen, Department of Geology, Portland State University
- *An investigation of the dielectric properties of various igneous rocks* – Steven Bernsen, Department of Geology, Portland State University
- *Classification of the mesosiderite meteorite CML0612* – Karla Farley, Department of Geology, Portland State University
- *Chemical characterization of lava vents responsible for the Picture Rock Basalts at Egli Rim in south central Oregon* – Sean M. Gallagher, Department of Geology, Portland State University
- *A pyroxene-enriched shock melt dike in the Buck Mountains 005 (L6) chondrite* – Ryan Brown, Melinda Huston, and Alex Ruzicka, Cascadia Meteorite Laboratory, Department of Geology, Portland State University
- *Nutrient dynamics and primary production in a pristine coastal mangrove ecosystem: Andaman Islands, India* – Emily Jenkins<sup>1</sup>, K. Nickodem<sup>2</sup>, A. Siemann<sup>2</sup>, A. Hoehner<sup>3</sup>, P.V. Sundareshwar<sup>4</sup>, R. Ramesh<sup>5</sup>, R. Purvaja<sup>5</sup>, K. Banerjee<sup>5</sup>, S. Manickam<sup>5</sup>, H. Haran<sup>5</sup>, <sup>1</sup>Department of Geology, Portland State University, <sup>2</sup>Civil Engineering & Geological Sciences, University of Notre Dame, <sup>3</sup>Earth Sciences, SUNY-Brockport, <sup>4</sup>Institute of Atmospheric Sciences, South Dakota School of Mines and Technology, <sup>5</sup>Institute for Ocean Management, Anna University, Chennai, India
- *A comparison of geology to radon test data in Portland, Oregon* – Tamara Linde, Cassandra Lindsey, Hilary Whitney, Selicity Icefire, Deborah Theisen, Scott Burns, Department of Geology, Portland State University
- *Radon hot spots in Oregon and the underlying geology* – Cassandra Lindsey, Tamara Linde, Hilary Whitney, and Dr. Scott Burns, Department of Geology, Portland State University
- *Revisiting volcanology and composition of rhyolites and associated REE rich mafic clasts of the Three Fingers Caldera, SE Oregon* – Philip Marcy<sup>1</sup>, Martin Streck<sup>1</sup>, Mark L. Ferns<sup>2</sup>, <sup>1</sup>Department of Geology, Portland State University, <sup>2</sup>Science Department, Eastern Oregon University
- *Fracture propagation and tidal fluctuation at Kamb Ice Sheet grounding line in West Antarctica* – Megan Masterson, Marin Klinger, Christina Hulbe, Department of Geology, Portland State University
- *Hydraulic fracturing comparison and the effects on their watershed* – Bryant Ruiz, Department of Geology, Portland State University
- *Variations in arsenic mobility and occurrence in high silica ash tuffs* – Courtney Savoie, R. Benjamin Perkins, Martin Streck, Department of Geology, Portland State University
- *Investigation of rising groundwater level observed at McMenamins Edgefield in Troutdale, Oregon* – Ann Stansbeary<sup>1</sup>, Emily Jenkins<sup>1</sup>, Austin Carnes<sup>2</sup>, Kysa Cronrath<sup>3</sup>, Scott Burns<sup>1</sup>, <sup>1</sup>Department of Geology, <sup>2</sup>Department of Environmental Science and Management, <sup>3</sup>Department of Civil and Environmental Engineering

Professional price is 2-for-1 when you bring a professional new to AEG along!



## Message from the Chair

Hello everyone!

I hope you all enjoyed meeting Matt Morris, our National AEG President, at the March meeting. Matt's rock slope stabilization presentation was entertaining and informative. Matt, we know you've been an exceptionally busy man these days, and we appreciate you making the time. Keep up the good work for the organization.

OK, there has been plenty of notice...Let's see an extraordinary turn-out of professionals at the April meeting for the Student Presentation Night! Ann Stansbeary and Emily Jenkins, and all the students involved this year, have put a lot of effort into the evening. As I mentioned at the March meeting, a few of the students will be sharing a PowerPoint presentation of their research posters during the time posters are being evaluated for awards. This will be much more interesting than waiting around to hear about the awards. And I promise that it won't take as long this year to decide on those awards as it did last year! Unfortunately, Steve Taylor and his students from WOU won't make the meeting this year (due to logistics and an April rather than May meeting). We look forward to them joining us next year.

Don't forget – if you are a GSA Member, you have until April 6th to vote for our very own Tom Kuper for GSA Council at [http://www.geosociety.org/aboutus/vote\\_LIVE.htm](http://www.geosociety.org/aboutus/vote_LIVE.htm)!

Hope you are enjoying the warm and sunny weather. Nice, isn't it?

See you soon,  
Robin

## Message from the PSU AEG Student Chapter

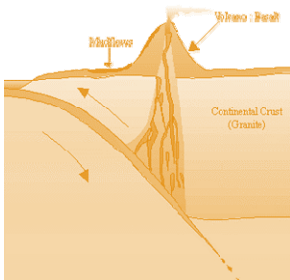
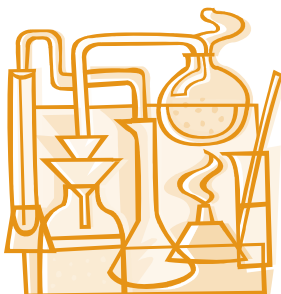
Portland State University's AEG Student Chapter has ended Winter term with two major events. The first annual Resume Workshop was held on February 27th which was an opportunity for students to fine-tune their resume. The two guest speakers included graduate student, Matt Lancaster and Student Employment Advisor from the Art Institute of Portland, Pamela Nelson-Gordon. Matt spoke about writing resumes and Pamela spoke about internships, interviews, and other employment tips. After our guest presentations were complete, there was one-on-one resume review time. Two additional guests who came to PSU to give students one-on-one feedback were Kevin Schleh, R.G., C.E.G., Senior Engineering Geologist of Geocon Northwest, Inc. and Cindy Hovind, PE GE, owner of Terra Dolce Consultants, Inc. The one-on-one resume review portion of the event went so well that both students and guests stayed an additional hour to continue. PSU AEG Student chapter would like to thank Kevin Schleh and Cindy Hovind for taking the time to help students and making this first annual Resume Workshop a huge success.

On March 7th, PSU AEG Student Chapter held their annual AEG Career Night which allows students to learn about different career paths within the Geology field. Three guest speakers for this event included Dulcy Berri, Principal Hydrogeologist of PBS Engineering and Environmental, Stephen Hay, R.G., C.E.G., Engineering Geologist of Region 1 Geo/Hydro/Hazmat Unit of ODOT, and Cynthia Gardner, Geologist at Cascades Volcano Observatory. Each guest gave a 20 minute presentation about their career, what day-to-day work consists of for them and tips for geology students entering the field. Students also had a chance to ask questions as well as network with the guests over dinner and dessert. PSU AEG Student chapter would like to thank Dulcy Berri, Stephen Hay and Cynthia Gardner for taking the time to help students and for making the 2013 AEG Career Night a great success.

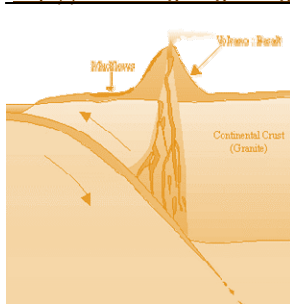
If you are a professional wanting to interact with students in our future events, please contact Ann Stansbeary at [ann.m.stansbeary@gmail.com](mailto:ann.m.stansbeary@gmail.com). PSU AEG provides parking passes, food and the opportunity to meet with fresh geology students who are excited about all things geology. PSU AEG Student chapter is looking forward to the upcoming AEG Student Presentation Night taking place April 16th when the students get a chance to present their active research projects to local professionals. This event is a highlight for students but only a success if local professionals come to participate as well.

Thank you so much for all of your support.

Best Wishes,  
Ann Stansbeary  
PSU AEG Student Chapter President







## Shallow Landslide Solution – Accomplish your priorities with slope instabilities.

Specifically designed for landslide properties of higher velocities, smaller volume, and less drainage.

- Field tested
- Dimensioned
- Simple installation
- Eco-friendly

Matching your cost-saving priorities for:

- Strength and durability
- Easy installation
- Simple maintenance

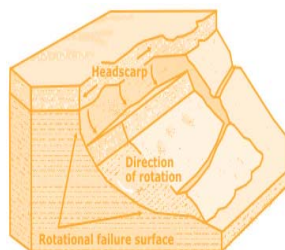
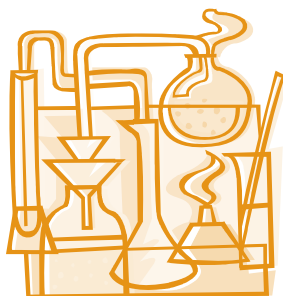
See more [www.geobrugg.com](http://www.geobrugg.com)



**Geobrugg North America, LLC**  
Tim Shevlin, PG  
Northwestern USA & Western Canada  
Phone: (503) 423-7258  
Fax: (505) 771-4081  
[tim.shevlin@geobrugg.com](mailto:tim.shevlin@geobrugg.com)  
[www.geobrugg.com](http://www.geobrugg.com)







## EXPERIENCED DRILLERS, INNOVATIVE TECHNOLOGY

Global Drilling Services



### OVER 120 YEARS GLOBAL DRILLING EXPERIENCE

Boart Longyear maximizes the return on your budget through knowledgeable crews, advanced equipment and experienced management teams.

We excel in various drilling methods including:

- Sonic Drilling
- Hollow Stem Auger Drilling
- Well Rehabilitation
- Cable Tool RC
- Mud and Air Rotary
- Bucket Auger Drilling
- Rock Coring

We also specialize in:

- Environmental and Geotechnical Investigations
- Construction De-watering Wells
- Large Diameter Water Wells
- Construction Borings
- Aquifer Tests

Boart Longyear  
Environmental and Infrastructure  
11277 SW Clay St., Suite A  
Sherwood, OR 97140  
Tel: (503) 572-3090  
[www.BoartLongyear.com](http://www.BoartLongyear.com) • ASX: BLY

 **BOART LONGYEAR**



## Geophysical Investigations

- Geotechnical
- Environmental
- Groundwater



Northwest  
Geophysical  
Associates, Inc.

**Now ZONGE-Oregon**

**Zonge**

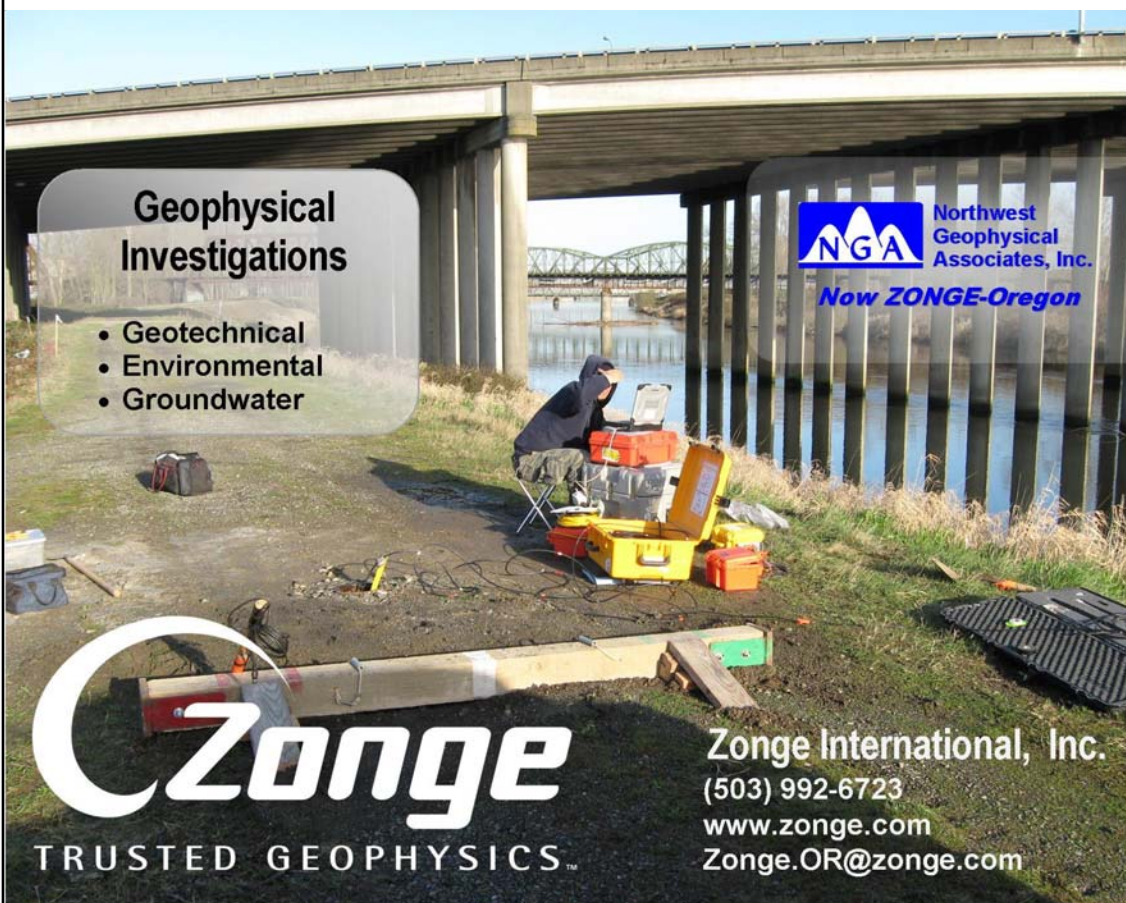
TRUSTED GEOPHYSICS™

Zonge International, Inc.

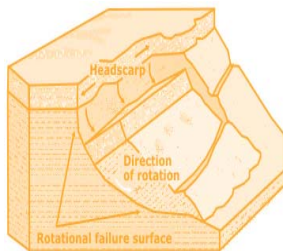
(503) 992-6723

[www.zonge.com](http://www.zonge.com)

[Zonge.OR@zonge.com](mailto:Zonge.OR@zonge.com)







## Western States Soil Conservation, Inc.

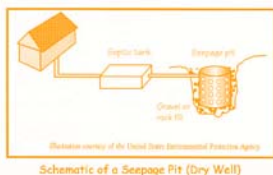
There is no limit to the depths we will go!



### Geotechnical & Environmental Drilling Services

3100 Schmidt Ln • PO BOX 128 • Hubbard, OR 97032  
(503) 982-1777 Office • (503) 982-8220 Fax

[westernstates@centurytel.net](mailto:westernstates@centurytel.net) • [www.westernstatesoil.com](http://www.westernstatesoil.com)



GEOPHYSICAL SURVEYING  
for environmental  
and geotechnical  
applications



503.501.7846

[nikos@pacificgeophysics.com](mailto:nikos@pacificgeophysics.com)

[www.pacificgeophysics.com](http://www.pacificgeophysics.com)

Knowledge. Experience. Commitment.

503.274.2010  
[vigil-agrimis.com](http://vigil-agrimis.com)

VIGIL AGRIMIS  
design professionals



Engineering +  
Environmental



Geo-Environmental



Environmental Engineering



Health & Safety



Civil Engineering



Natural Resources

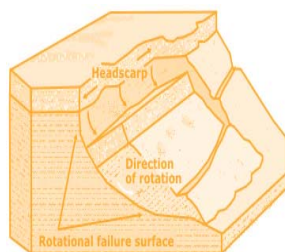
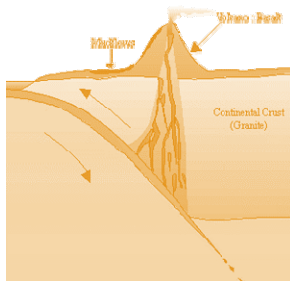


Geotechnical Engineering

4412 SW Corbett Avenue, Portland, Oregon 97239  
503.248.1939 [www.pbsenv.com](http://www.pbsenv.com)

*"Keen observation is at  
least as necessary as  
penetrating analysis"*

*Karl Terzaghi*



**GeoPotential** ENVIRONMENTAL & EXPLORATION GEOPHYSICS  
22323 East Wild Fern Lane, Brightwood, Oregon 97011  
PH(503) 622-0154 FAX(503) 622-0526  
WEB <http://www.geopotential.biz/>  
E-MAIL [GeoPotential@geopotential.biz](mailto:GeoPotential@geopotential.biz)

**SUBSURFACE MAPPING SURVEYS**



**MOBILE  
LABORATORY**

**GROUND PENETRATING  
RADAR SURVEYS**

**MAGNETOMETER &  
ELECTROMAGNETIC  
SURVEYS**

**GRAVITY  
SURVEYS**

**RESISTIVITY  
SURVEYS**

## Thanks For Supporting AEG

Ash Creek Associates

AMEC Environment & Infrastructure, Inc.

Columbia Geotechnical

Cornforth Consultants

GRI

Kuper Consulting

Oregon Department of Geology and  
Mineral Industries

PBS Engineering and Environmental

Portland State University

## The Oregon Section Newsletter

OREGON SECTION AEG NEWSLETTER is published monthly from September through May. Subscriptions are for members of AEG affiliated with the Oregon Section or other Sections, and other interested people who have requested and paid a local subscription fee of \$10.00. E-mail subscriptions are free. News items are invited and should be sent to: Scott Braunsten, OR Section AEG Newsletter Editor, PBS Engineering and Environmental, 4412 SW Corbett Avenue, Portland, OR 97239, e-mail: [scott.braunsten@pbsenv.com](mailto:scott.braunsten@pbsenv.com), phone (503) 417-7737. Electronic media is preferred. Deadline for submittal is the 25th of the month. Advertising: business card \$100/yr; ¼ page \$200/yr; ½ page \$350/yr; 1 page \$450/yr. Please notify Scott if you have a change to your email or mailing address.

The Association of Engineering Geologists (AEG) contributes to its members' professional success and the public welfare by providing leadership, advocacy, and applied research in environmental and engineering geology. AEG's values are based on the belief that its members have a responsibility to assume stewardship over their fields of expertise. AEG is the acknowledged international leader in environmental and engineering geology, and is greatly respected for its stewardship of the profession.



## Section Officers & Committee Chairs



Chair:  
Robin Johnston  
AMEC Environment & Infrastructure  
[Robin.johnston@amec.com](mailto:Robin.johnston@amec.com)



Program Co-Chair:  
Michael Marshall  
GRI  
[mmarshall@gri.com](mailto:mmarshall@gri.com)

Could Be  
You ?

Legislature Chair:  
Vacant



Chair Elect:  
Darren Beckstrand  
Cornforth Consultants  
[dbeckstrand@cornforthconsultants.com](mailto:dbeckstrand@cornforthconsultants.com)

Could Be  
You ?

Program Co-Chair:  
Vacant

Could Be  
You ?

Continuing Education Liaison:  
Vacant



Treasurer:  
Linda Mark  
Vigil-Agrimis  
[lmark@vigil-agrimis.com](mailto:lmark@vigil-agrimis.com)

Could Be  
You ?

Field-Trip Chair:  
Vacant



Newsletter Editor:  
Scott Braunsten  
PBS Engineering and Environmental  
[scott.braunsten@pbsenv.com](mailto:scott.braunsten@pbsenv.com)



Secretary:  
Adam Reese  
Ash Creek Associates  
[ARese@ashcreekassociates.com](mailto:ARese@ashcreekassociates.com)



Membership Chair:  
Ruth Wilmoth  
Columbia Geotechnical, Inc.  
[ruthwilmoth@comcast.net](mailto:ruthwilmoth@comcast.net)



Webpage Editor:  
Keith Olson  
[kvo@pdx.edu](mailto:kvo@pdx.edu)



Past Chair:  
Kevin Schleh  
[kmschleh@comcast.net](mailto:kmschleh@comcast.net)

Could Be  
You ?

History Chair:  
Vacant



PSU Student Chapter President:  
Ann Stansbeary  
[ann.m.stansbeary@gmail.com](mailto:ann.m.stansbeary@gmail.com)

The Oregon Section is also on the web at <http://www.aegoregon.org>  
National AEG webpage: <http://aegweb.org>