



OREGON SECTION OF THE ASSOCIATION OF
ENVIRONMENTAL & ENGINEERING
GEOLOGISTS

April 2011

Volume 11, Number 7

The Official

OREGON SECTION AEG NEWSLETTER

April Meeting Details
Wednesday April 20

Location: Old Market Pub

6959 SW Multnomah

Portland, OR

6:00 pm Social

7:00 pm Dinner

7:30 pm Presentation

Dinner: Pizza & Salad

\$20 Dinner (\$5 Students)

Reservations:
mwegner@cornforthconsultants.com
with "AEG Reservation" in
the subject line or 971-222-
2047 by 4pm Thur. April 14

**There is a \$2 surcharge for
those who do not reserve by
the deadline.**

Upcoming Meetings:

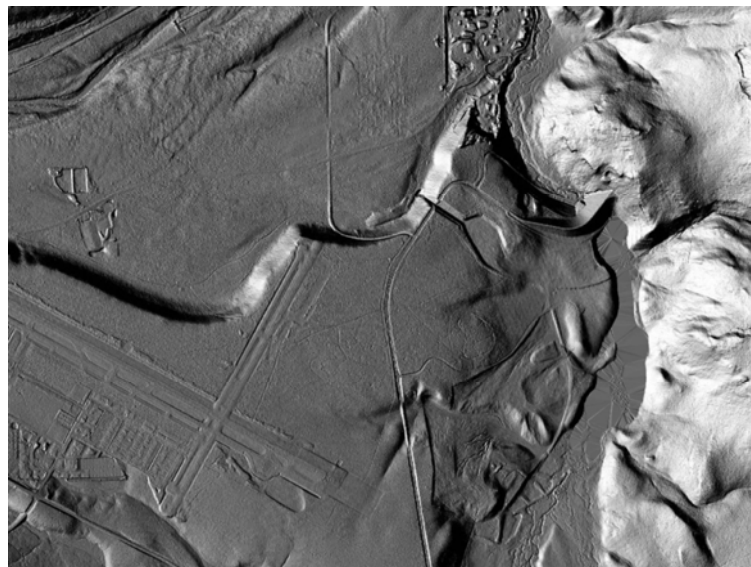
May 10 - Student Night



NOTE:
Meeting is on
a Wednesday

The April Meetings Guest Speaker is Bruce Hilton (National AEG President) —Topic: Martis Creek Dam – The Discovery of a New Capable Fault in Tahoe Basin

Martis Creek Dam is located in the north Tahoe Basin near Truckee California. In 2006, this dam was identified by preliminary risk analyses to be one of the Corps of Engineers' top ten high risk dams in the entire US based on seepage and seismic deficiencies. During the ensuing seepage and seismic studies, LiDAR data was obtained largely as a base for topographic analysis of hydrologic breach and inundation mapping studies. A review of these very high resolution, bare earth LiDAR by the Corps' suggested the presence of a strong, continuous lineation through the spillway near the dam and extending for miles in either direction. This talk focuses on the use of these LiDAR data and the geomorphic analysis and paleoseismic trenching to further evaluate this newly named Polaris Fault Zone.



April Meeting Special Treat: Boart Longyear Has Graciously Offered to Sponsor the Bar at the April Meeting

So come out and have a beer on Boart and join us in thanking them for their continued long support of AEG! (see page 3 for Boart Longyear details)



**BOART
LONGYEAR™**

*"Keen observation is at
least as necessary as
penetrating analysis"*

Karl Terzaghi



Bio: Bruce Hilton

Mr. Hilton began his career at Leighton & Associates in Southern CA in 1978 and continued his career in Northern CA with KLEINFELDER since 1993. His focus has been with Engineering Geology of private and public projects throughout the US during his 32 years in the business. He is KLEINFELDER's Chief Engineering Geologist and, in this role, he is responsible for the quality, external exposure, marketing, and mentorship throughout the firm. His experience spans both environmental and engineering geology with emphasis on geomorphology, fault studies, landslides and slope stability, GIS, dams and transportation, and soil and groundwater contamination assessments. He resides in Sacramento California with his wife and enjoys, volleyball, golf, and body surfing.



Message from the Chair

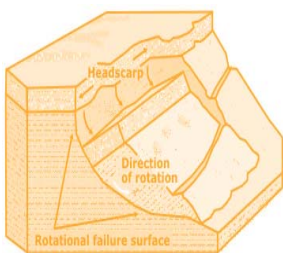
The AEG Oregon Section had a busy month in March with two great presentations. First on March 2, we had the Jahns Lecturer, William Haneberg, who spoke to us about LiDAR for engineering geology applications. It's incredible with the advances in technology and what we are able to see and learn from LiDAR. We appreciate Dr. Haneberg for taking the time to visit the Pacific Northwest and present to us. On March 15, we had Rob Witter of DOGAMI speak to us about the Chile earthquake in February 2010 and the implications to Oregon. Dr. Witter was also gracious enough to prepare some slides and give us some information regarding the Japan earthquake and tsunami that happened just four days before his presentation. What a treat to have two great speakers and wonderful presentations in March 2011.

The AEG Oregon Section Board moved the annual Student Poster Night to the month of May this year and we are sure to have a great turnout of students strutting their stuff and impressing us with their research. Student Night is a great way to introduce students to their potential future employers and a great way to get them involved in AEG. We are looking for three volunteers to be judges for the Student Poster Night and we appreciate it if you would please consider being a judge. Please e-mail anyone of the Oregon Section Board or speak to us at this month's meeting. Speaking of which...

We are pleased to have the National AEG President, Bruce Hilton, present to us this month. It is always an honor to have the AEG National President visit our section and we hope that you come to the meeting and show your support for AEG. Please note that the meeting is on WEDNESDAY and not the typical third Tuesday. The day change is to accompany the National President's busy schedule.

I look forward to seeing you at this month's meeting on Wednesday, April 20, 2011.

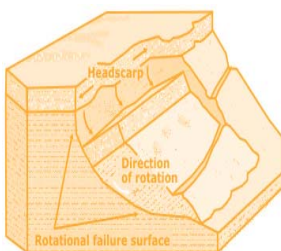
Lisa Glonek
AEG Oregon Section Chair





*"Keen observation is at
least as necessary as
penetrating analysis"*

Karl Terzaghi



Portland State AEG Student Chapter News

The Portland State AEG student chapter had two notable events this past winter term. On February 18th, sixteen students and one professor visited Major Drilling LLC in Sherwood, OR. Terry Jacques and his staff graciously hosted us at their facility. We spent some time learning about equipment, drilling protocol, and regulations from Terry. He gave us a tour of the facility and set up three drilling rigs to demonstrate for us. Despite the rain, Terry and his crew drilled core samples with a Geo-Probe direct push, vibracore, and hollow stem auger. The students all had positive things to say about the visit. A big thank you to Major Drilling LLC, Terry Jacques and his crew for giving the students a great experience!



Our career night was held on February 23rd. This is an annual event for the students at Portland State. Normally, we get a large turn-out, but this year (due to "snowpocalypse") we had some cancellations. Seventeen students and two guest speakers stuck it out and braved the potential bad weather. Even though the group was smaller, we had an evening of good questions and good advice. Thanks to Stephen Hay of ODOT and Sunny Simpkins of Ash Creek Consultants for being there for our students!

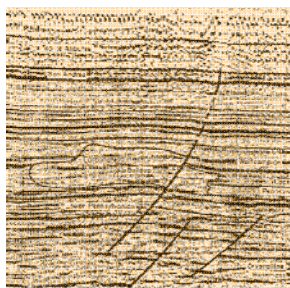
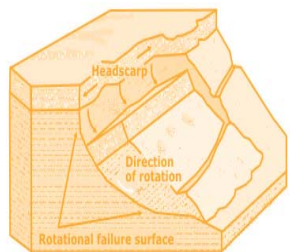
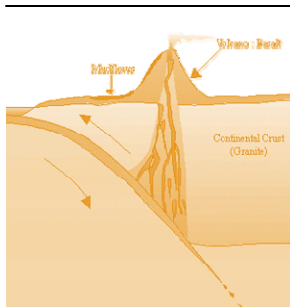


Our next event major event will be the student poster night. This is scheduled on May 10th. We are hoping that some companies and agencies will donate gifts to give to our student presenters. If you'd like to donate something, feel free to bring it to the April AEG meeting, or send me an email at dunbar.erin@gmail.com and we can arrange a pick-up of the items.

See you April 20th.

Erin Dunbar

AEG Portland State Student Chapter President



ENVIRONMENTAL & EXPLORATION GEOPHYSICS

22323 East Wild Fern Lane, Brightwood, Oregon 97011 • PH (503) 622-0154 • FAX (503) 622-0526
WEB <http://www.geopotential.biz/> E-MAIL GeoPotential@geopotential.biz

SUBSURFACE MAPPING SURVEYS

**GROUND PENETRATING
RADAR SURVEYS**

**MAGNETOMETER &
ELECTROMAGNETIC
SURVEYS**

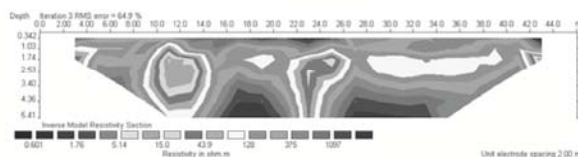
**GRAVITY
SURVEYS**

**RESISTIVITY
SURVEYS**



**PROJECTS: GEOLOGIC
ENGINEERING, ENVIRONMENTAL
OIL & MINERAL EXPLORATION
ARCHAEOLOGICAL**

**LOCATE: VOIDS, UTILITIES
STORAGE & SEPTIC TANKS
FOUNDATIONS, DRAIN FIELDS
WATER WELLS
MONITORING WELLS**



EXPERIENCED DRILLERS, INNOVATIVE TECHNOLOGY
Global Drilling Services



OVER 120 YEARS GLOBAL DRILLING EXPERIENCE

Boart Longyear maximizes the return on your budget through knowledgeable crews, advanced equipment and experienced management teams.

We excel in various drilling methods including:

- Sonic Drilling
- Hollow Stem Auger Drilling
- Well Rehabilitation
- Cable Tool RC
- Mud and Air Rotary
- Bucket Auger Drilling
- Rock Coring

We also specialize in:

- Environmental and Geotechnical Investigations
- Construction De-watering Wells
- Large Diameter Water Wells
- Construction Borings
- Aquifer Tests

Boart Longyear
Environmental and Infrastructure
11277 SW Clay St., Suite A
Sherwood, OR 97140
Tel: (503) 572-3090
www.BoartLongyear.com • ASX: BLY

BOART LONGYEAR



*"Keen observation is at
least as necessary as
penetrating analysis"*

Karl Terzaghi



SHANNON & WILSON, INC.
GEOTECHNICAL AND ENVIRONMENTAL CONSULTANTS

www.shannonwilson.com
(503) 223-6147
Lake Oswego, Oregon
Other offices in Washington,
Alaska, California, Colorado,
Missouri, and Florida

- Deep foundations
- Ground improvement
- Geohazard studies
- Seismic design
- Retaining walls
- Dewatering
- Revetments
- Value engineering
- Waterfront structures
- Tunnels/shafts
- Trenchless technologies
- Landslide studies/mitigation
- Rock slope design
- Forensic failure studies

Spencer Creek Bridge Foundation Design
2006
Beverly Beach, Oregon
For client H.W. Lochner and owner ODOT

NGA Northwest Geophysical Associates

Geophysical Investigations

- Geotechnical
- Environmental
- Groundwater

(541) 757-7231 www.nga.com

CASCADE DRILLING INC.
FULL SERVICE DRILLING

ENVIRONMENTAL GEOTECHNICAL COMMERCIAL

- Air / Mud Rotary & Rock Coring
- Limited Access and Track Equipment
- Dewatering Wells
- Hollow Stem Auger
- Sonic Drilling
- Direct Push (Probe)
- In-Situ Injection
- Vacuum / Air Knife Services

CASCADE DRILLING, INC. - PORTLAND
13600 SE AMBLER RD
CLACKAMAS, OR 97015
Office: (503) 775-4118
Fax: (503) 775-4099
www.cascadedrilling.com

| | | | |
|----------------------------------|-----------------------------------|-------------------------------------|--------------------------------------|
| SEATTLE (425) 485-8908 | PORTLAND (503) 775-4118 | SACRAMENTO (916) 638-1189 | LOS ANGELES (562) 929-8176 |
|----------------------------------|-----------------------------------|-------------------------------------|--------------------------------------|

Thanks For Supporting

Amec Earth and Environmental, Inc.

Columbia Geotechnical

Cornforth Consultants

Delta Environmental

Geocon NW

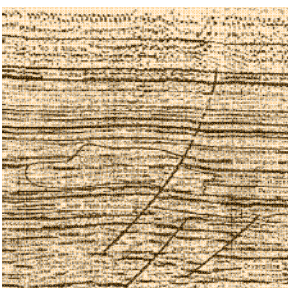
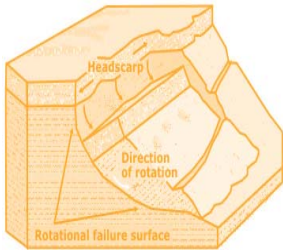
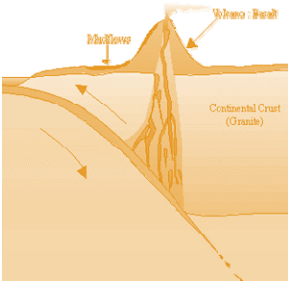
Kuper Consulting

Oregon Department of Forestry

Oregon Department of Geology and Mineral Industries

Parametrix

Portland State University



Western States Soil Conservation, Inc.

There is no limit to the depths we will go



Geotechnical and Environmental Drilling Services
PO BOX 428 ■ 3100 Schmidt Lane ■ Hubbard, Oregon 97032
(503) 982-1777 Office ■ (503) 982-8220 Fax
westernstates@centurytel.net ■ www.westernstatesoil.com

MAJOR

Drilling Environmental, LLC

Partners On the Ground

- Mud Rotary & Hard Rock Coring
- Rubber Track Equipment
- Hollow Stem Auger
- Direct Push (Geoprobe)
- Borehole Clearance (Vac-U-Dig)
- Roto-Sonic Drilling

Portland (503) 925-1133
Salt Lake City (801) 974-0645
Little Falls (320) 632-3010
Huntsville (256) 852-7000
www.majordrilling.com

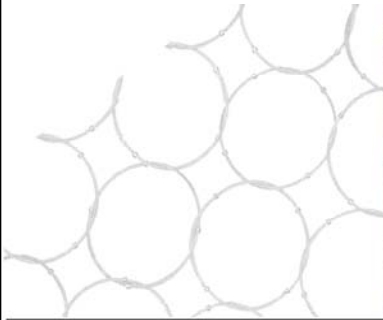
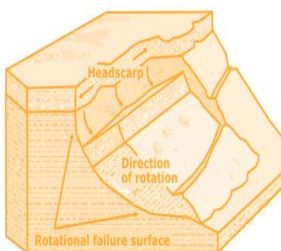
*The MAJOR Advantage™ Senior drilling talent
and management with all new equipment*





*"Keen observation is at
least as necessary as
penetrating analysis"*

Karl Terzaghi



Natural Hazard Solutions – Accomplish your priorities for hazard protection.

Systems engineered for maximum protection are not just products, but tested and proven solutions for:

- Debris flow
- Landslide
- Rockfall
- Slope instabilities
- Avalanche

Matching your cost-saving priorities for:

- Strength and durability
- Easy installation
- Simple maintenance

See more www.geobrugg.com

GEOBRUGG®

Geobrugg North America, LLC

Tim Shevlin, PG

Northwestern USA & Western Canada

Phone: (503) 423-7258 • Fax: (503) 391-6954

tim.shevlin@geobrugg.com

www.geobrugg.com



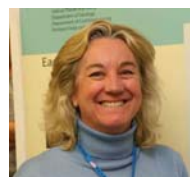
Section Officers & Committee Chairs



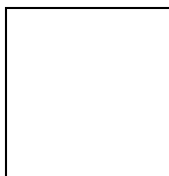
Chair:
Lisa Glonek
lglonek@hotmail.com



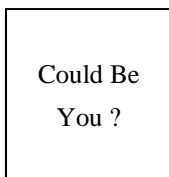
Program Co-Chair:
Michael Marshall
Parametrix
mmarshall@parametrix.com



Legislature Chair:
Dorian Kuper
Kuper Consulting
dorian@kupercon.com



Chair Elect:
Kevin Schleh
Geocon NW
Kevin@GeoConNW.com



Program Co-Chair:
Vacant



Continuing Education Liaison:
Andrew Harvey
drewh1031@earthlink.net



Treasurer:
Robin Johnston
Amec Earth & Environmental
Robin.johnston@amec.com



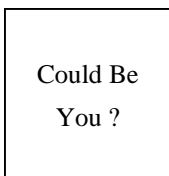
Membership Chair:
Ruth Wilmoth
Columbia Geotechnical, Inc.
ruthwilmoth@comcast.net



Newsletter Editor:
Bill Burns
DOGAMI
bill.burns@dogami.state.or.us



Secretary:
Darren Beckstrand
Cornforth Consultants
dbeckstran-
dand@cornforthconsultants.co



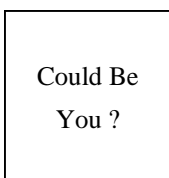
Field-Trip Chair:
Vacant



Webpage Editor:
Keith Olson
kvo@pdx.edu



Past Chair:
Dave Scofield
ACOE
scofield@onemain.com



History Chair:
Vacant



PSU Student Chapter President:
Erin Dunbar
Dunbar.erin@gmail.com

The Oregon Section is also on the web at <http://www.aegoregon.org>
National AEG webpage: <http://aegweb.org>

The Oregon Section Newsletter

OREGON SECTION AEG NEWSLETTER is published monthly from September through May. Subscriptions are for members of AEG affiliated with the Oregon Section or other Sections, and other interested people who have requested and paid a local subscription fee of \$10.00. E-mail subscriptions are free. News items are invited and should be sent to: Bill Burns, OR Section AEG Newsletter Editor, Oregon Department of Geology, 800 NE Oregon Street, Portland, OR 97232, e-mail: <bill.burns@dogami.state.or.us>, phone (971) 673-1555. Electronic media is preferred. Deadline for submittal is Friday three weeks before each meeting. Advertising: business card \$100/yr; ¼ page \$200/yr; ½ page \$350/yr. Please notify Bill if you have a change to your email or mailing address.

The Association of Engineering Geologists (AEG) contributes to its members' professional success and the public welfare by providing leadership, advocacy, and applied research in environmental and engineering geology. AEG's values are based on the belief that its members have a responsibility to assume stewardship over their fields of expertise. AEG is the acknowledged international leader in environmental and engineering geology, and is greatly respected for its stewardship of the profession.

