



The Official

OREGON SECTION AEG NEWSLETTER

February Meeting Details

Date: Tues. February 15th

Location: Old Market Pub

6959 SW Multnomah

Portland, OR

6:00 pm Social

7:00 pm Dinner

7:30 pm Presentation

Dinner: Pizza & Salad

\$20Dinner (\$5 Students)

Reservations:
mwegner@cornforthconsultants.com
with "AEG Reservation" in
the subject line or 971-222-
2047 by 4pm Thur. Feb 10th

There is a \$2 surcharge for
those who do not reserve by
the deadline.

Upcoming Meetings:

March 2 - Bill Haneberg

March 15 - Rob Witter

April 20 - Bruce Hilton

May 10 - Student Night



The February Meetings Guest Speakers are Yumei Wang, Leon Kempner, and Allison Pyrch —Topic: ASCE TCLEE (Technical Council on Lifeline Earthquake Engineering) Reconnaissance for the February 27, 2010 Chile Magnitude 8.8 Earthquake

The 2010 Chilean event is unique in that their geology, geography, industry, infrastructure and proximity to a subduction zone are similar to that of the Pacific Northwest. Their experience provides an opportunity for assessing the potential performance of our infrastructure including the PNW power grid system during our expected Cascadia Subduction Zone 9.0 earthquake. Specific topics covered will include:

- Slides and discussion of 2010 Chilean earthquake damage as observed in bridges, roads, soil failures and more
- Discussion of structural performance of electric power facilities and observations with respect to the PacificNW power grid.
- Comparing damage to Cascadia earthquake damage models, which have predicted >\$30 B direct damage, and >5,000 fatalities, tsunamis, soil failures, 37,000 buildings completely damaged in the Pacific Northwest
- OSSPAC's (Oregon's earthquake commission) ideas for improving transportation system performance from a Cascadia quake



*“Keen observation is at
least as necessary as
penetrating analysis”*

Karl Terzaghi



Bio: Yumei Wang, PE

Yumei Wang is a geotechnical engineer and the Geohazards Team Leader at Oregon Department of Geology and Mineral Industries (DOGAMI). Yumei Wang has been a motivating force in Oregon’s earthquake preparedness since she started working for DOGAMI in 1995. She is an active member of ASCE, OSSPAC, and the Western States Seismic Policy Council. Her research interests are geotechnical engineering and geology, geologic hazards analyses and risk reduction, sustainability involving natural hazards and infrastructure and science, engineering and technology policy.

Bio: Leon Kempner Jr., PE, PhD

Leon Kempner is the Principal Structural Engineer at Bonneville Power Administration/USDOE & 2009 Duke award recipient. Dr. Kempner has 38 years experience as a structural engineer for the Bonneville Power Administration. Assignments have included structural engineering analysis, design, assessment, and research of transmission line facilities (transmission line towers, substation and microwave structures, and seismic upgrade substation control houses). The last 17 years Dr. Kempner has been performing seismic evaluation, research, qualification, shake-table testing, standards development, and mitigation design of the Bonneville Power Administration transmission line facilities. Dr. Kempner has over fifty technical papers discussing structural engineering (analysis, design, and research) of transmission line facilities.

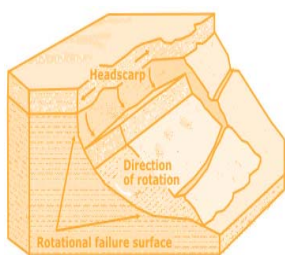
Bio: Allison Pynch, PE, GE

Allison Pynch is a Senior Engineer at Shannon & Wilson, Inc. Allison Pynch has over eight years of geotechnical engineering experience. She has been involved in the engineering of many types of projects around Oregon, Washington, and California including industrial, residential, commercial, and infrastructure projects. Infrastructure projects she has been involved with include bridges, docks, waste water treatment plants, intersection improvements, and pipeline installations. She is currently working on several large transportation projects around the Portland Metropolitan area.

Message from the Chair

What a great turnout we had for the joint meeting with ASCE last month. Special thanks to Charlie Hammond and George Machan of Cornforth Consultants for their great presentation about a landslide on an African island. Although most of the seats were filled, we did have approximately one dozen people that signed up for the meeting that did not show. Oregon AEG operates on a tight budget and most of the time we are lucky to break even at the monthly meetings. We understand that tight budgets are the norm and we would like to keep costs low. However, if we continue to lose money we will have to reevaluate our finances and possibly increase costs. We enjoy our membership and take great pride in providing wonderful networking opportunities and helping students. Please, if you find out that you will not be able to attend a meeting have your name removed from the list by the deadline for the meeting signup (typically the Thursday before). Additionally, if you do not sign up by the reservation deadline, we will be enforcing the extra \$2 charge. We must charge extra in order to cover our costs and not lose money for the Oregon AEG section. Please welcome Yumei Wang of DOGAMI for a great presentation.

Lisa Glonek
Oregon Section Chair



“Keen observation is at least as necessary as penetrating analysis”

Karl Terzaghi



SHANNON & WILSON, INC.
GEOTECHNICAL AND ENVIRONMENTAL CONSULTANTS

www.shannonwilson.com
(503) 223-6147
Lake Oswego, Oregon
Other offices in Washington, Alaska, California, Colorado, Missouri, and Florida

- Deep foundations
- Ground improvement
- Geohazard studies
- Seismic design
- Retaining walls
- Dewatering
- Revetments
- Value engineering
- Waterfront structures
- Tunnels/shafts
- Trenchless technologies
- Landslide studies/mitigation
- Rock slope design
- Forensic failure studies

Spencer Creek Bridge Foundation Design
2009
Beverly Beach, Oregon
For client H.W. Lochner and owner ODOT

CASCADE DRILLING INC.
FULL SERVICE DRILLING

ENVIRONMENTAL GEOTECHNICAL COMMERCIAL

- Air / Mud Rotary & Rock Coring
- Limited Access and Track Equipment
- Dewatering Wells
- Hollow Stem Auger
- Sonic Drilling
- Direct Push (Probe)
- In-Situ Injection
- Vacuum / Air Knife Services

CASCADE DRILLING, INC - PORTLAND
13600 SE AMBLER RD
CLACKAMAS, OR 97015
Office: (503) 775-4118
Fax: (503) 775-4099
www.cascadedrilling.com

SEATTLE (425)485-8908	PORTLAND (503)775-4118	SACRAMENTO (916) 638-1169	LOS ANGELES (562) 929-8176
---------------------------------	----------------------------------	-------------------------------------	--------------------------------------

NGA Northwest Geophysical Associates

Geophysical Investigations

- Geotechnical
- Environmental
- Groundwater

(541) 757-7231 www.nga.com

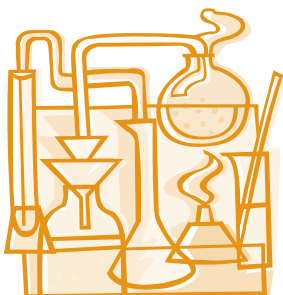
Geo-Tech Explorations
A Division of Boart Longyear Company

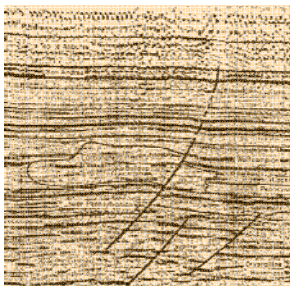
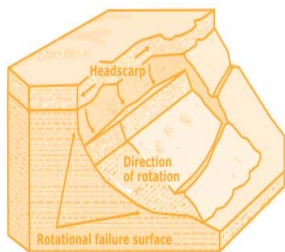
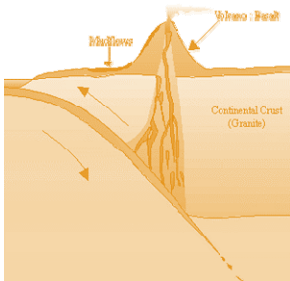
Providing Professional Drilling Services Since 1981

Hollow Stem Auger / Mud Rotary / Air Rotary
Geoprobe / CPT / Bucket Auger / Cable Tool
Reverse Circulation / Pump Services
Well Rehabilitation

**Construction Dewatering Wells
Environmental Investigations
Large Diameter Water Wells
Geotechnical Investigations
Construction Borings
Aquifer Tests**

Phone: 800-275-3885 or 503-692-6400
Fax: 503-692-4759





Western States Soil Conservation, Inc.

There is no limit to the depths we will go



Geotechnical and Environmental Drilling Services
 PO BOX 428 ▪ 3100 Schmidt Lane ▪ Hubbard, Oregon 97032
 (503) 982-1777 Office ▪ (503) 982-8220 Fax
 westernstates@centurytel.net ▪ www.westernstatesoil.com



Thanks For Supporting AEG !

Amec Earth and Environmental, Inc.

Columbia Geotechnical

Cornforth Consultants

Delta Environmental

Geocon NW


Kuper Consulting

Oregon Department of Forestry

Oregon Department of Geology and Mineral Industries

Parametrix

Portland State University



GeoPotential

ENVIRONMENTAL & EXPLORATION GEOPHYSICS

22323 East Wild Fern Lane, Brightwood, Oregon 97011 • PH (503) 622-0154 • FAX (503) 622-0526

WEB <http://www.geopotential.biz/> E-MAIL GeoPotential@geopotential.biz


SUBSURFACE MAPPING SURVEYS

GROUND PENETRATING RADAR SURVEYS

MAGNETOMETER & ELECTROMAGNETIC SURVEYS

GRAVITY SURVEYS

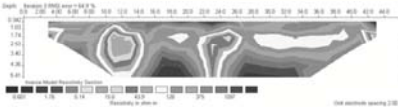
RESISTIVITY SURVEYS



MOBILE LABORATORY

PROJECTS: GEOLOGIC ENGINEERING, ENVIRONMENTAL OIL & MINERAL EXPLORATION, ARCHAEOLOGICAL

LOCATE: VOIDS, UTILITIES STORAGE & SEPTIC TANKS, FOUNDATIONS, DRAIN FIELDS, WATER WELLS, MONITORING WELLS



Section Officers & Committee Chairs



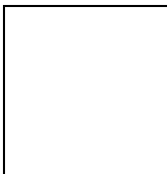
Chair:
Lisa Glonek
lglonek@hotmail.com



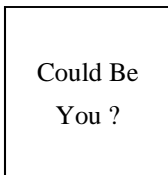
Program Co-Chair:
Michael Marshall
Parametrix
mmmarshall@parametrix.com



Legislature Chair:
Dorian Kuper
Kuper Consulting
dorian@kupercon.com



Chair Elect:
Kevin Schleh
Geocon NW
Kevin@GeoConNW.com



Program Co-Chair:
Vacant



Continuing Education Liaison:
Andrew Harvey
drewh1031@earthlink.net



Treasurer:
Robin Johnston
Amec Earth & Environmental
Robin.johnston@amec.com



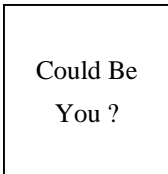
Membership Chair:
Ruth Wilmoth
Columbia Geotechnical, Inc.
ruthwilmoth@comcast.net



Newsletter Editor:
Bill Burns
DOGAMI
bill.burns@dogami.state.or.us



Secretary:
Darren Beckstrand
Cornforth Consultants
dbeckstran-
dand@cornforthconsultants.co



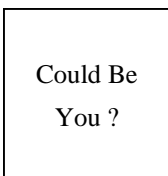
Field-Trip Chair:
Vacant



Webpage Editor:
Keith Olson
kvo@pdx.edu



Past Chair:
Dave Scofield
ACOE
scofield@onemain.com



History Chair:
Vacant



PSU Student Chapter President:
Erin Dunbar
Dunbar.erin@gmail.com

The Oregon Section is also on the web at <http://www.aegoregon.org>
National AEG webpage: <http://aegweb.org>

The Oregon Section Newsletter

OREGON SECTION AEG NEWSLETTER is published monthly from September through May. Subscriptions are for members of AEG affiliated with the Oregon Section or other Sections, and other interested people who have requested and paid a local subscription fee of \$10.00. E-mail subscriptions are free. News items are invited and should be sent to: Bill Burns, OR Section AEG Newsletter Editor, Oregon Department of Geology, 800 NE Oregon Street, Portland, OR 97232, e-mail: <bill.burns@dogami.state.or.us>, phone (971) 673-1555. Electronic media is preferred. Deadline for submittal is Friday three weeks before each meeting. Advertising: business card \$100/yr; ¼ page \$200/yr; ½ page \$350/yr. Please notify Bill if you have a change to your email or mailing address.

The Association of Engineering Geologists (AEG) contributes to its members' professional success and the public welfare by providing leadership, advocacy, and applied research in environmental and engineering geology. AEG's values are based on the belief that its members have a responsibility to assume stewardship over their fields of expertise. AEG is the acknowledged international leader in environmental and engineering geology, and is greatly respected for its stewardship of the profession.

