



The Official

OREGON SECTION AEG NEWSLETTER

October Meeting Details

Date: Tues. October 19th

Location: Old Market Pub

6959 SW Multnomah

Portland, OR

6:00 pm Social

6:45 pm Dinner

7:30 pm Presentation

Dinner: Pizza & Salad

\$20 Dinner (\$5 Students)

Reservations:
mwegner@cornforthconsultants.com
with "AEG Reservation" in
the subject line or 971-222-
2047 by 4pm October 14th

There is a \$2 surcharge for those who do not reserve by the deadline.

Upcoming Meetings:

November - Stephen Hay

December - TBA

January - Charlie Hammond & George Machan

February - Yumei Wang

March - Rob Witter

April - Student Night

May - TBA



The October Guest Speaker is Eldon Gath from Earth Consultants International—Topic: Quantification of Coseismic Fault Displacements on the Pedro Miguel Fault, Through the Panama Canal Expansion Project’s Borinquen Dam

As part of the seismic hazard investigation component for the Panama Canal Expansion Project’s design studies, we completed detailed paleoseismic investigations of the Pedro Miguel fault. The N-S trending Pedro Miguel fault transects the existing Panama Canal through Miraflores Lake, midway between the Pedro Miguel and Miraflores Locks. The fault not only poses a severe shaking hazard to the Panama Canal, it also crosses through the proposed footprint of Borinquen Dam, a critical part of the expansion program. Borinquen Dam is composed of four discrete dam segments, totaling nearly 5 km in length. It will contain the new 6.7 km long approach channel to the new Pacific Lock, preserving the Gatún Lake water elevation at 10.6 meters above the current Miraflores Lake.

Our studies of the fault involved over 70 geologically logged trenches, including four locations where we excavated the fault in 3-D to determine earthquake recurrence, displacement magnitudes and fault slip kinematics. The Pedro Miguel fault poses a significant hazard to the project. We were able to determine that it has had three surface-rupturing earthquakes in the last 1600 years, with the last event almost certainly occurring on May 2, 1621 AD. These three events all had 2-3 meters of right-slip displacement, with 8-9 meters cumulative and at a slip rate of about 5 mm/yr. The fault exploits weak, low-angle, west-dipping bedding planes of the La Boca Formation to rupture through to the surface as a series of north-stepping, en-echelon, west-dipping fault petals that roll over near the surface to almost horizontal. The challenge for the dam’s design will be to correctly understand the specific geology of the fault-crossing location to be able to predict the fault rupture kinematics, and then to use deformation modeling to understand how that rupture will transfer into the dam’s earthen structure. The talk will focus on the geological investigations, the methodology of 3-D fault trenching, the challenges of doing so in a tropical environment with 3-4 meters of annual rainfall, and despite all, the fun our team had in working on such an important world class project.



“Keen observation is at least as necessary as penetrating analysis”

Karl Terzaghi



Bio: Eldon Gath

Eldon Gath, President of Earth Consultants International, has 30 years of consulting engineering geology experience, including projects in six different countries, principally involving active fault investigations, seismic hazards, and geological site characterization. He has a BS degree in Geology from the University of Minnesota, 20 years of post-graduate work in various California colleges, and California PG and EG licenses. He is also heavily involved in professional practice organizations, including the Association of Engineering Geologists' President in 1996-97. Mr. Gath represented the Geoscience and Planning disciplines on the National Academy of Sciences, National Research Council's Engineering and Infrastructure Committee to Develop a Long-Term Research Agenda for Earthquake Engineering, and is currently serving on the Technical Advisory Committee on Geology and Geophysics for the California Board for Professional Engineers and Land Surveyors. He has been a consultant to the Panama Canal Authority for the past 6 years, heavily involved in design studies for the Panama Canal Expansion Project and a complete reassessment of the seismic hazard of the original Panama Canal structures.



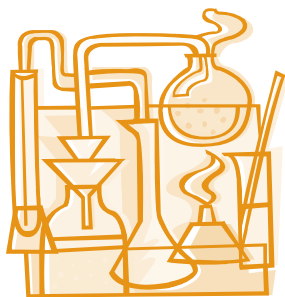
Message from the Chair

You thought the end of September was humid in the Pacific Northwest? Try Charleston, SC this time of year. I was in Charleston last week for the National AEG conference and I attended the Board of Directors meeting (I made it out just before tropical storm Nicole hit the area). It's one of my duties as the Oregon Section Chair and I was happy to attend. Geologists work hard and they play hard. We attended business during the day and enjoyed ourselves at night. It was also a great opportunity to meet with geologists from around the country, learn who is who, network, and have fun. Charleston is a beautiful city that is rich with history and I enjoyed walking around the area soaking up the sights when time allowed. Next year the meeting will be in Anchorage, Alaska and what a great place to enjoy some geology and good people.

I must mention that two of our students (Serin Duplantis and Kate Mickelson) and a recent former student (Rachel Pirot) won awards at the national meeting. Congratulations Ladies!

Are you ready for this month's presentation? Please welcome Eldon Gath.

Lisa Glonek
Oregon AEG Section Chair



“Keen observation is at least as necessary as penetrating analysis”

Karl Terzaghi



SHANNON & WILSON, INC.
GEOTECHNICAL AND ENVIRONMENTAL CONSULTANTS

www.shannonwilson.com
(503) 223-6147
Lake Oswego, Oregon
Other offices in Washington, Alaska, California, Colorado, Missouri, and Florida

- Deep foundations
- Ground improvement
- Geohazard studies
- Seismic design
- Retaining walls
- Dewatering
- Revetments
- Value engineering
- Waterfront structures
- Tunnels/shafts
- Trenchless technologies
- Landslide studies/mitigation
- Rock slope design
- Forensic failure studies

Spencer Creek Bridge Foundation Design
2009
Beverly Beach, Oregon
For client H.W. Lochner and owner ODOT

CASCADE DRILLING INC.
FULL SERVICE DRILLING

ENVIRONMENTAL GEOTECHNICAL COMMERCIAL

- Air / Mud Rotary & Rock Coring
- Limited Access and Track Equipment
- Dewatering Wells
- Hollow Stem Auger
- Sonic Drilling
- Direct Push (Probe)
- In-Situ Injection
- Vacuum / Air Knife Services

CASCADE DRILLING, INC - PORTLAND
13600 SE AMBLER RD
CLACKAMAS, OR 97015
Office: (503) 775-4118
Fax: (503) 775-4099
www.cascadedrilling.com

SEATTLE (425)485-8908	PORTLAND (503)775-4118	SACRAMENTO (916) 638-1169	LOS ANGELES (562) 929-8176
---------------------------------	----------------------------------	-------------------------------------	--------------------------------------

NGA Northwest Geophysical Associates

Geophysical Investigations

- Geotechnical
- Environmental
- Groundwater

(541) 757-7231 www.nga.com

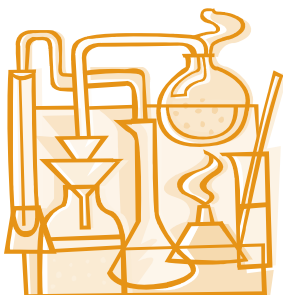
Geo-Tech Explorations
A Division of Boart Longyear Company

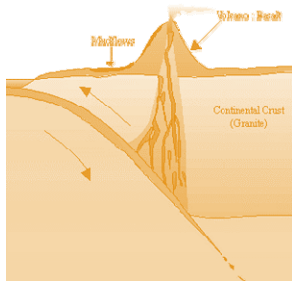
Providing Professional Drilling Services Since 1981

Hollow Stem Auger / Mud Rotary / Air Rotary
Geoprobe / CPT / Bucket Auger / Cable Tool
Reverse Circulation / Pump Services
Well Rehabilitation

**Construction Dewatering Wells
Environmental Investigations
Large Diameter Water Wells
Geotechnical Investigations
Construction Borings
Aquifer Tests**

Phone: 800-275-3885 or 503-692-6400
Fax: 503-692-4759



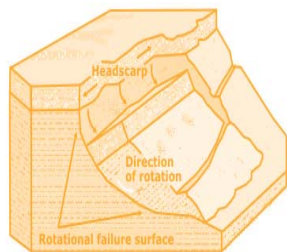


Western States Soil Conservation, Inc.

There is no limit to the depths we will go



Geotechnical and Environmental Drilling Services
PO BOX 428 ▪ 3100 Schmidt Lane ▪ Hubbard, Oregon 97032
(503) 982-1777 Office ▪ (503) 982-8220 Fax
westernstates@centurytel.net ▪ www.westernstatesoil.com



Thanks For Supporting AEG !

Amec Earth and Environmental, Inc.

Columbia Geotechnical

Cornforth Consultants

Delta Environmental

Geocon NW

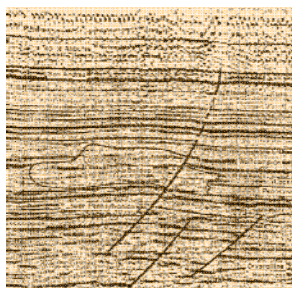
Kuper Consulting

Oregon Department of Forestry

Oregon Department of Geology and Mineral Industries

Paramatrix

Portland State University



GeoPotential
ENVIRONMENTAL & EXPLORATION GEOPHYSICS

22323 East Wild Fern Lane, Brightwood, Oregon 97011 • PH (503) 622-0154 • FAX (503) 622-0526
WEB <http://www.geopotential.biz/> E-MAIL GeoPotential@geopotential.biz


SUBSURFACE MAPPING SURVEYS

GROUND PENETRATING RADAR SURVEYS

MAGNETOMETER & ELECTROMAGNETIC SURVEYS

GRAVITY SURVEYS

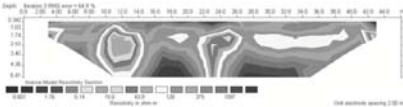
RESISTIVITY SURVEYS



MOBILE LABORATORY

PROJECTS: GEOLOGIC ENGINEERING, ENVIRONMENTAL OIL & MINERAL EXPLORATION ARCHAEOLOGICAL

LOCATE: VOIDS, UTILITIES STORAGE & SEPTIC TANKS FOUNDATIONS, DRAIN FIELDS WATER WELLS MONITORING WELLS



Scale: 1:10000
North Arrow
Elevation: 1000 to 2000 feet

Section Officers & Committee Chairs



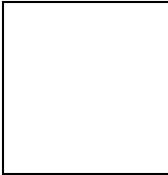
Chair:
Lisa Glonek
Delta Environmental
lglonek@deltaenv.com



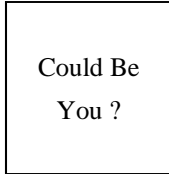
Program Co-Chair:
Michael Marshall
Parametrix
mmarshall@parametrix.com



Legislature Chair:
Dorian Kuper
Kuper Consulting
dorian@kupercon.com



Chair Elect:
Kevin Schleh
Geocon NW
Kevin@GeoConNW.com



Program Co-Chair:
Vacant



Continuing Education Liaison:
Andrew Harvey
drewh1031@earthlink.net



Treasurer:
Robin Johnston
Amec Earth & Environmental
Robin.johnston@amec.com



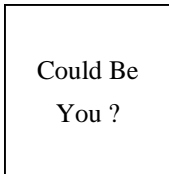
Membership Chair:
Ruth Wilmoth
Columbia Geotechnical, Inc.
ruthwilmoth@comcast.net



Newsletter Editor:
Bill Burns
DOGAMI
bill.burns@dogami.state.or.us



Secretary:
Darren Beckstrand
Cornforth Consultants
dbeckstran-
dand@cornforthconsultants.co



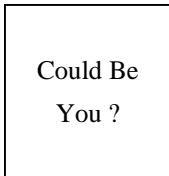
Field-Trip Chair:
Vacant



Webpage Editor:
Keith Olson
kvo@pdx.edu



Past Chair:
Dave Scofield
ACOE
scofield@onemain.com



History Chair:
Vacant



PSU Student Chapter Presi-
dent:
Erin Dunbar
Dunbar.erin@gmail.com

The Oregon Section is also on the web at <http://www.aegoregon.org>
National AEG webpage: <http://aegweb.org>

The Oregon Section Newsletter

OREGON SECTION AEG NEWSLETTER is published monthly from September through May. Subscriptions are for members of AEG affiliated with the Oregon Section or other Sections, and other interested people who have requested and paid a local subscription fee of \$10.00. E-mail subscriptions are free. News items are invited and should be sent to: Bill Burns, OR Section AEG Newsletter Editor, Oregon Department of Geology, 800 NE Oregon Street, Portland, OR 97232, e-mail: <bill.burns@dogami.state.or.us>, phone (971) 673-1555. Electronic media is preferred. Deadline for submittal is Friday three weeks before each meeting. Advertising: business card \$100/yr; ¼ page \$200/yr; ½ page \$350/yr. Please notify Bill if you have a change to your email or mailing address.

The Association of Engineering Geologists (AEG) contributes to its members' professional success and the public welfare by providing leadership, advocacy, and applied research in environmental and engineering geology. AEG's values are based on the belief that its members have a responsibility to assume stewardship over their fields of expertise. AEG is the acknowledged international leader in environmental and engineering geology, and is greatly respected for its stewardship of the profession.

