

The Official

OREGON SECTION AEG NEWSLETTER

April Meeting Details

Date: Tuesday April 20th

Location: Old Market Pub

6959 SW Multnomah

Portland, OR

6:00 pm Social & Posters

7:00 pm Dinner & Judging

8:00 pm Awards

Dinner: Pizza and Salad

\$15 Dinner (\$5 Students)

Reservations:
mwegner@cornforthconsultants.com
with "AEG Reservation" in
the subject line or 971-222-
2047 by 4pm April 15th

**There is a \$2 surcharge for
those who do not reserve by
the deadline.**

Upcoming Meetings:

June 1 -Paul Marinos: Tunneling

June 2*-(2pm)-Paul Marinos-Geology
and Dam Engineering

June 2*-(5pm)-Paul Marinos-Rock Mass
Characterization

June 2*-(6pm)-Jason Hinkle-Woodson
Debris Flow

*Meeting at the PSU Geology Department



The April Meeting is the Annual AEG Student Night !

The 8th annual Student Poster Night will be hosted by the PSU student chapter of AEG on April 20, 2010. A poster session will highlight the academic activities and research of graduate and undergraduate students from Oregon universities. The structure of our event will be similar to the AEG Oregon Section meetings, with dinner and drinks served. However, instead of a single, professional presentation following dinner, a poster session will be held giving students a chance to showcase their recent work. Students from all universities in Oregon and Idaho are encouraged to attend and submit a poster. Participants are not required to be AEG members. Poster topics should preferably be within the field of applied geology and can range from term projects to thesis research for undergraduate and graduate students. A committee from the AEG Oregon Section will be judging the posters and awarding a number of \$100 and \$200 prizes for outstanding posters. Please contact the Portland State University, AEG Student Chapter President, Kate Mickelson kmickels@pdx.edu with any questions.

Posters:

Kathryn Barnard; Wine Label Logos: Organic, Biodynamic®, and Sustainable Practices in the Northern Willamette Valley, Oregon

Serin Duplantis, Kathryn Barnard, Tracy Ryan; Engineering Geology Properties of Soils Developed on Landslides in Clackamas County, Oregon

Kendra Williams; Debris Flow Characterization and Analysis for November, 2006 Events on Mt. Adams, Washington

Amy Staples; Cross Correlation of Stream Discharge and Rain Events for Fanno Creek, Portland, Oregon

Josh Heard; Reconstruction of Late Pleistocene and Holocene Glacial Fluctuations in the Goat Rocks Wilderness, Washington

Ryan Cole; Zn adsorption by native Portland soils

Kate Mickelson; Landslide Differential, Inventory, and Susceptibility Mapping using LIDAR for the Panther Creek Watershed in the Oregon Coast Range

Steve Sobieszczyk; Landscapes and Landslides: How Land Use Practices and Mass Wasting Affect Downstream Turbidity

Erin Dunbar, Carley Francis, Keith V. Olson, Matt Poole, Jon Weatherford; Bedrock Mapping and Rock Fall Hazard Evaluation of Silver Falls State Park, Oregon

Ryan Stanley; Land Cover Analysis Utilizing Aerial Photography, Remote Sensing and Geographic Information Systems: Application to Riparian Zones in the Mid-Willamette Basin, Oregon

TJ Schepker; X-ray Diffraction as a Tool for Classification of Equilibrated Ordinary Chondrites

Tracy Ryan; Arsenic in the Soils and Groundwater of Oregon

Angus Leger; Investigating the Hydraulic Integrity of an Aquitard, Confining Unit 1, Columbia South Shore Well Field, Portland, Oregon

Engineers Without Borders at PSU; Designing a Local Potable Water System in Rural Nicaragua

Anthony Bartruff; A Characterization of Thermally Derived Tufa Mounds, Lake Albert, Oregon

Annie Donehey and Fiona Seifert; Wave Propagation in 'Flubber'

Steve Wilson; The Effect of Down Slope Winds on Melt in a Polar Desert

Derrick Wagner; Assessing Seasonal Variations in Recharge and Water Quality in Wisconsin's Silurian Aquifer

“Keen observation is at least as necessary as penetrating analysis”

Karl Terzaghi

PSU Spring Quarter Advanced Engineering Geology: Case Histories

Scott Burns will be teaching Advanced Engineering Geology this quarter and welcomes all to attend.

Spring Quarter, Portland State University, 2010, Classes Monday and Wednesday Nights

First talk at 5:00 PM and second talk at 6:00 PM, Cramer Hall S17, 1721 SW Broadway, Portland State University

- March 29 **Scott Burns, Geology Dept., Portland State University** “Introduction to the Course” & “Geologic Provinces in Oregon”
Scott Burns, Geology Dept., Portland State University “Landslides of Portland”
- March 31 **David Scofield, US Army Corps of Engineers, Portland** “Bonneville Fish Hatchery Wellfield, Columbia Gorge; A Case History of Groundwater Interaction”
Scott Burns & Josh Theule, Geology Dept., Portland State University “Landslide susceptibility mapping along gas pipelines in NW OR”
- April 5 **Tom DeRoo, U.S. Forest Service, Mt. Hood National Forest** “Debris flow hazards of Mt. Hood, Oregon”
Anne McDonald, Geoenvironmental Services, Portland “A highway no longer runs through it; stream restoration along highways in Oregon”
- April 7 **Ken Shump, CH2MHILL, Portland** “Remediation of the Railroad Tie plant in the Dalles, Oregon, a Superfund Site”
Tim Pfeiffer, Foundation Engineering, Tigard, Oregon “Rockfall simulation models and a case history from Multnomah Falls, Oregon”
- April 12 **Sue Bednarz, Jacobs Associates, Portland** “Using geology and history to model ground conditions for Selected Willamette River CSO program tunnel projects”
Tim Shevlin, Geobrugg North America, Salem, Oregon “Shallow landslides: to anchor them or to catch them?”
- April 14 **Gary Peterson, Shannon and Wilson, Lake Oswego** “LOIS (Lake Oswego Interceptor Sewer Project): Unique geology, unique solution”
Frank Reckendorf, Reckendorf and Associates, Salem “Geologic hazards of development along the Oregon Coast”
- April 19 **Kim Marcus, Shaw Environmental Group, Portland** “Mine restoration techniques in the Pacific Northwest”
Stephen Hay, ODOT, Region 1, Portland “I-5: SW Iowa Street Viaduct Bridge replacement; bridge design in an urban environment”
- April 21 **Charlie Hammond, Cornforth Consultants, Tigard** “Engineering geology of the Marmot Dam removal, Sandy River, Oregon”
Charlie Hammond, Cornforth Consultants, Tigard “Engineering geology of the Barney Reservoir Dam raise, Oregon Coast Range”
- April 26 **Jon Koloski, Principal, Geoenvironmental Services, Tacoma, Washington** “Panama Canal Port Widening”
Jon Koloski, Principal, Geoenvironmental Services, Tacoma, Washington “Snoqualmie Falls Electrical Power Generation Plant Retrofit”
- April 28 **John Sager, Cornforth Consultants (Retired, US Army Corps of Engineers), Portland** “Mt. St. Helens: 30 years of the Corps of Engineers: recovery, restoration and mitigation”
Tim Blackwood, Pacific Geotechnical, Portland State University “Standard of practice in development of steep slope areas”
- May 5 **Bill Burgel, HDR Engineering, Portland** “Bonners Ferry Landslide, Idaho”
Bill Burgel, HDR Engineering, Portland “Geotechnical implications of high speed rail in the Pacific Northwest”
- May 10 **Tom Kuper, Kuper Consulting, Tualatin** “Officers Dam Repair, Izee, Oregon”
Dorian Kuper, Kuper Consulting, Tualatin & Past National AEG Pres. “High walls to Highways: engineering geology case studies of Aggregate mining and reclamation”
- May 12 **Mavis Kent, Department of Environmental Quality, Portland** “Basic geology is still important in cleaning environmental sites”
Rick Kent, Geoenvironmental and Geologic Services, Battleground “Engineering geology study along Johnson Creek, Portland”
- May 17 **Bob Miller, Robert Miller Consulting, West Linn** “Environmental cleanup of a major truck stop, Portland, OR”
Pete Stroud, Kleinfelder, Portland “Hydrology baseline study, Newberry geothermal project, Newberry Volcano, Central Oregon”
- May 19 **Rich Rinne, Ash Creek Associates, Portland** “Lessons learned from the Capes Landslide Reactivation, Tillamook County, Oregon”
Bill Burns, DOGAMI, Portland “Landslide hazard and risk analysis of Astoria, Oregon using LiDAR and historical data with special emphasis on earth-quake analysis”
- May 24 **Doug Anderson, Washington DOT, Olympia** “SR6 Landslide Response, Raymond to Chehalis, Winter of 2007-2008”
Jim Struthers, Washington DOT, Olympia “Alaska Way Viaduct Project Field Exploration Approach for tunneling design, Seattle, Washington”
- May 26 **Sue D’Agness, ODOT, Portland.** “Wilson River Rockslide, MP 31, Highway 6, Tillamook County”
John Kuiper, AMEC Earth and Environmental, Portland “Delineation and remediation of an insecticide plume at Camp Pendleton, California”
- June 2 **Paul Marinos, Professor of Engineering Geology, National Technical University of Athens, Greece, Richard Jahns National Lecturer (AEG & GSA)** “Rock mass characterization: a vehicle to translate geology into the design of engineering structures:
Jason Hinkle, Oregon Dept. of Forestry, Salem (not yet confirmed) “Woodson Debris Flow near Clatskanie, Oregon, Dec. 11, 2007”



“Keen observation is at least as necessary as penetrating analysis”

Karl Terzaghi



SHANNON & WILSON, INC.
GEOTECHNICAL AND ENVIRONMENTAL CONSULTANTS

www.shannonwilson.com
(503) 223-6147
Lake Oswego, Oregon
Other offices in Washington, Alaska, California, Colorado, Missouri, and Florida

- Deep foundations
- Ground improvement
- Geohazard studies
- Seismic design
- Retaining walls
- Dewatering
- Revetments
- Value engineering
- Waterfront structures
- Tunnels/shafts
- Trenchless technologies
- Landslide studies/mitigation
- Rock slope design
- Forensic failure studies

Spencer Creek Bridge Foundation Design
2009
Beverly Beach, Oregon
For client H.W. Lochner and owner ODOT

CASCADE DRILLING INC.
FULL SERVICE DRILLING

ENVIRONMENTAL GEOTECHNICAL COMMERCIAL

- Air / Mud Rotary & Rock Coring
- Limited Access and Track Equipment
- Dewatering Wells
- Hollow Stem Auger
- Sonic Drilling
- Direct Push (Probe)
- In-Situ Injection
- Vacuum / Air Knife Services

CASCADE DRILLING, INC - PORTLAND
13600 SE AMBLER RD
CLACKAMAS, OR 97015
Office: (503) 775-4118
Fax: (503) 775-4099
www.cascadedrilling.com

SEATTLE (425)485-8908	PORTLAND (503)775-4118	SACRAMENTO (916) 638-1169	LOS ANGELES (562) 929-8176
---------------------------------	----------------------------------	-------------------------------------	--------------------------------------

NGA Northwest Geophysical Associates

Geophysical Investigations

- Geotechnical
- Environmental
- Groundwater

(541) 757-7231 www.nga.com

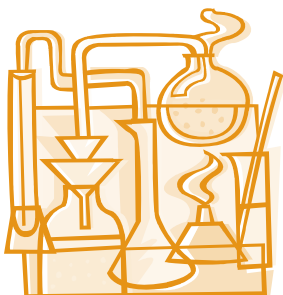
Geo-Tech Explorations
A Division of Boart Longyear Company

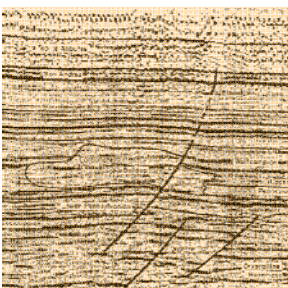
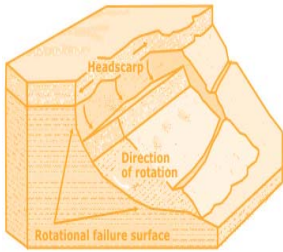
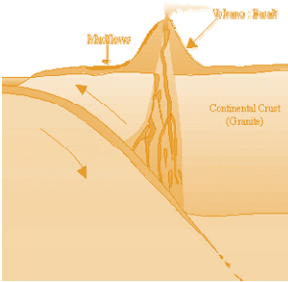
Providing Professional Drilling Services Since 1981

Hollow Stem Auger / Mud Rotary / Air Rotary
Geoprobe / CPT / Bucket Auger / Cable Tool
Reverse Circulation / Pump Services
Well Rehabilitation

**Construction Dewatering Wells
Environmental Investigations
Large Diameter Water Wells
Geotechnical Investigations
Construction Borings
Aquifer Tests**

Phone: 800-275-3885 or 503-692-6400
Fax: 503-692-4759





Western States Soil Conservation, Inc.

There is no limit to the depths we will go



Geotechnical and Environmental Drilling Services
 PO BOX 428 ▪ 3100 Schmidt Lane ▪ Hubbard, Oregon 97032
 (503) 982-1777 Office ▪ (503) 982-8220 Fax
 westernstates@centurytel.net ▪ www.westernstatesoil.com

Thanks For Supporting AEG !

Amec Earth and Environmental, Inc.

Columbia Geotechnical

Cornforth Consultants

Delta Environmental

Geocon NW

Kuper Consulting

Oregon Department of Forestry

Oregon Department of Geology and Mineral Industries

Parametrix

Portland State University

GeoPotential
ENVIRONMENTAL & EXPLORATION GEOPHYSICS
 22323 East Wild Fern Lane, Brightwood, Oregon 97011 • PH (503) 622-0154 • FAX (503) 622-0526
 WEB <http://www.geopotential.biz/> E-MAIL GeoPotential@geopotential.biz


SUBSURFACE MAPPING SURVEYS

GROUND PENETRATING RADAR SURVEYS

MAGNETOMETER & ELECTROMAGNETIC SURVEYS

GRAVITY SURVEYS

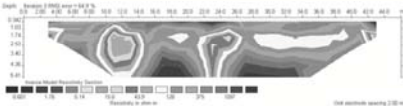
RESISTIVITY SURVEYS



MOBILE LABORATORY

PROJECTS: GEOLOGIC ENGINEERING, ENVIRONMENTAL OIL & MINERAL EXPLORATION, ARCHAEOLOGICAL

LOCATE: VOIDS, UTILITIES STORAGE & SEPTIC TANKS FOUNDATIONS, DRAIN FIELDS WATER WELLS MONITORING WELLS



Section Officers & Committee Chairs



Chair:
Dave Scofield
ACOE
scofield@onemain.com



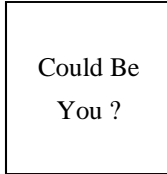
Program Co-Chair:
Michael Marshall
Parametrix
mmarshall@parametrix.com



Legislature Chair:
Dorian Kuper
Kuper Consulting
dorian@kupercon.com



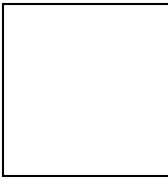
Chair Elect:
Lisa Glonek
Delta Environmental
lglonek@deltaenv.com



Program Co-Chair:
Vacant



Continuing Education Liaison:
Andrew Harvey
drewh1031@earthlink.net



Treasurer:
Kevin Schleh
Geocon NW
Kevin@GeoConNW.com



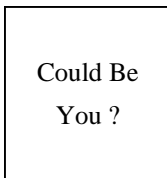
Membership Chair:
Ruth Wilmoth
Columbia Geotechnical, Inc.
ruthwilmoth@comcast.net



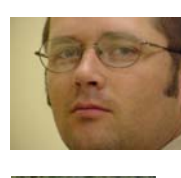
Newsletter Editor:
Bill Burns
DOGAMI
bill.burns@dogami.state.or.us



Secretary:
Robin Johnston
Amec Earth & Environmental
Robin.johnston@amec.com



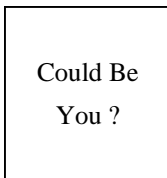
Field-Trip Chair:
Vacant



Webpage Editor:
Darren Beckstrand
Cornforth Consultants
dbeckstrand@cornforthconsultants.com



Past Chair:
Jason Hinkle
ODF
jhinkle@odf.state.or.us



History Chair:
Vacant



PSU Student Chapter President: Kate Mickelson
kmickels@pdx.edu

The Oregon Section is also on the web at <http://www.aegoregon.org>
National AEG webpage: <http://aegweb.org>

The Oregon Section Newsletter

OREGON SECTION AEG NEWSLETTER is published monthly from September through May. Subscriptions are for members of AEG affiliated with the Oregon Section or other Sections, and other interested people who have requested and paid a local subscription fee of \$10.00. E-mail subscriptions are free. News items are invited and should be sent to: Bill Burns, OR Section AEG Newsletter Editor, Oregon Department of Geology, 800 NE Oregon Street, Portland, OR 97232, e-mail: <bill.burns@dogami.state.or.us>, phone (971) 673-1555. Electronic media is preferred. Deadline for submittal is Friday three weeks before each meeting. Advertising: business card \$100/yr; ¼ page \$200/yr; ½ page \$350/yr. Please notify Bill if you have a change to your email or mailing address.

The Association of Engineering Geologists (AEG) contributes to its members' professional success and the public welfare by providing leadership, advocacy, and applied research in environmental and engineering geology. AEG's values are based on the belief that its members have a responsibility to assume stewardship over their fields of expertise. AEG is the acknowledged international leader in environmental and engineering geology, and is greatly respected for its stewardship of the profession.

