



The Official

OREGON SECTION AEG NEWSLETTER

March Meeting Details

Date: Tuesday March 16th

Location: Ernesto's Italian

8544 SW Apple Way

Portland-Beaverton, OR

6:00 pm Social

7:00 pm Dinner

8:00 pm Presentation

Dinner: Pasta and Salad

\$15 Dinner (\$5 Students)

Reservations: mwegner@cornforthconsultants.com with "AEG Reservation" in the subject line or 971-222-2047 by 4pm Thurs March 11

There is a \$2 surcharge for those who do not reserve by the deadline.

Upcoming Meetings:

Apr. 16—Student Night

May 18—TBA

June 1—TBA

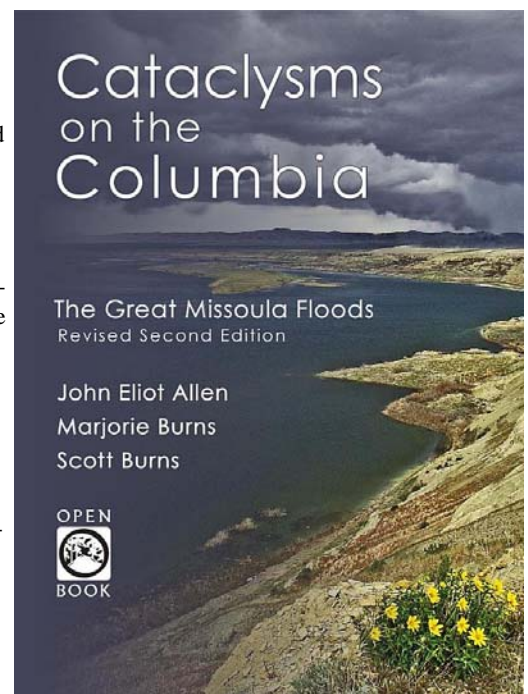


The March Meetings Guest Speaker is Scott Burns from Portland State University—Cataclysms on the Columbia: The Great Missoula Floods

One of the greatest set of geological events to ever have occurred in North America was given the name, the Missoula Floods. The talk will focus on the incredible story of discovery and development of the idea of the floods by J Harlen Bretz and then will discuss the effect of the floods on the development of the landscape of 16,000 square miles of the Pacific Northwest. The floods occurred between 15,000 and 18,000 years ago.

Speaker Bio: Scott Burns

Scott is a Professor of Geology and past Chair of the Dept. of Geology at Portland State University where he just finished his 19th year of teaching. He was also Associate Dean of the College of Liberal Arts and Sciences at P.S.U. from 1997-1999. He has been teaching for 39 years, with past positions in Switzerland, New Zealand, Washington, Colorado and Louisiana. He is a 6th generation Oregonian who grew up in Beaverton and is very happy to be "home" after a 25 year hiatus! Scott specializes in environmental and engineering geology, geomorphology, soils, and Quaternary geology. In Oregon, he has projects involving landslides and land use, environmental cleanup of service stations, slope stability, earthquake hazard mapping, Missoula Floods, paleosols, loess soil stratigraphy, radon generation from soils, the distribution of heavy metals and trace elements in Oregon soils and alpine soil development. He has been active in mapping landslides in the Pacific Northwest since his return to Portland. Scott has won many awards for outstanding teaching with the most significant being the Faculty Senate Chair Award at Louisiana Tech University in 1987, the Distinguished Faculty Award from the Portland State Alumni Association in 2001, and the George Hoffmann Award from PSU in 2007. He has authored over 90 publications and has had over 25 research grants. His first book, Environmental, Groundwater and Engineering Geology: Applications from Oregon, came out January of 1998. Scott has been the president of the Faculty Senate at three different universities: Louisiana Tech University and the American College of Switzerland and Portland State University. He actively helps local TV and radio stations and newspapers bring important geological news to the public. For the past 40 years he has been studying wine and terroir – the relationship between wine, soils, geology and climate. (continued on page2)



Signed copies will be available for \$24.95

All proceeds will go to 2 PSU scholarship funds!

“Keen observation is at least as necessary as penetrating analysis”

Karl Terzaghi



Speaker Bio: Scott Burns

He has BS (Chemistry) and MS (Physical Science) degrees from Stanford University in California, plus a Ph.D. in geology from the University of Colorado, Boulder. He is has memberships in over 20 professional organizations and is most active in the Association of Engineering Geologists, Geological Society of America, National Association of Geology Teachers, and the Soil Science Society of America. He is past president of the Oregon Society of Soil Scientists and the Oregon Section of the Association of Engineering Geologists. He was national chair of the engineering geology division of the Geological Society of America in 1999-2000. He was national president of the Association of Engineering Geologists from 2002-2003. He was chosen a fellow of the Geological Society of America in 2004.

Scott was chosen a fellow with the Kellogg National Fellowship Program from 1990 - 1993 based on his national leadership performance. He was president of the Downtown Rotary Club of Portland, Oregon's oldest and largest Rotary club this past year.

He has been active working with youth as a basketball coach. Scott enjoys all sports, especially basketball, running, skiing, hiking, swimming, tennis, and golf. He has been married for 35 years to Glenda, and they have three children: Lisa (31), Doug (28) and Tracy (25). The Burns family lives in Tualatin.

Scott and Marjorie Burns, both Professors at Portland State University, have recently published a book, Cataclysms on the Columbia: The Great Missoula Floods. It was first published in 1986 by John Allen and Marjorie, but John passed away 13 years ago and Scott has updated the exciting additions at the science end of the story in this edition. The Missoula Floods are one of the greatest geological stories in the Pacific Northwest, and the development of the theory by J Harlen Bretz is a classic.

Mazamas Research Evening 2010 - NW Glaciers, Change over the Past Century

Friday - April 9, 2010 @ 6pm. (Social hour, with refreshments starts at 6pm, program starts at 7pm)

Speakers: Andrew G. Fountain, Professor, Geology Department Portland State University; Karl Lillquist, Professor, Geography Department Co-Director, Resource Management Program Central Washington University. The research findings to be presented are partially based on historic Mazamas photographs and glacier measurements. Historic photographs and artifacts from early glacier research will be on display.

Mazama Mountaineering Center, 527 SE 43rd Ave (at Stark), Portland OR 97215

Phone 503-227-2345 Fax 503-227-0862, email: adventure@mazamas.org

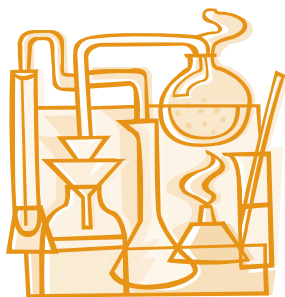
News Release: Haiti Earthquake

A senior utility analyst from the Oregon Public Utility Commission (OPUC) is currently taking part in evaluating the post-earthquake damage and recovery effort in Haiti. Rick Carter is a ten-year veteran of the OPUC who focuses on emergency preparedness and disaster response who also has over 35 years of experience working in the utility sector. Team members arrived Feb. 28 for a weeklong investigation. Carter is part of the investigation team of the Technical Council on Lifeline Earthquake Engineering (TCLEE) of the American Society of Civil Engineers. Carter is evaluating the performance of power and telecommunication systems. "I expect to see firsthand the devastating impact the earthquake had on the critical energy and telecommunications infrastructures in-country," Carter said before going. "I'd note that the Haiti earthquake and its level of devastation may closely mirror what we could experience with the Cascadia subduction event predicted for the West Coast including Oregon. The lessons learned from this trip will provide critical information needed to formulate a robust seismic vulnerability plan for Oregon's critical energy infrastructures, and will be used in the development of a comprehensive Energy Assurance Plan for our State. More information on TCLEE and forthcoming information on the Haiti investigation can be found at: http://www.asce.org/instfound/techcomm_tclee.cfm

The OPUC, Oregon Dept of Energy, and DOGAMI are working on a state energy assurance project with the Cascadia earthquake as being the most probably disaster we face. We are assessing the reliability of petroleum fuel, electricity and natural gas services. If you would like information on Rick's findings in Haiti and how they relate to Oregon's energy situation, please contact Yumei Wang (I'm at 971-673-1551).


*“Keen observation is at
least as necessary as
penetrating analysis”*

Karl Terzaghi



Seismological Society of America 2010 Annual Meeting: Portland, OR April 21-23

The meeting will be held 21-23 April 2010 at the Downtown Waterfront Marriott in Portland, Oregon. Additional information is now available on the 2010 meeting home page (<http://www.seismosoc.org/meetings/2010/index.php>).



Source: PNSN

THE BIG ONE IS COMING: WHAT ARE YOU GOING TO DO ABOUT IT?

**Town Hall Meeting on
Wednesday, April 21, 2010
6:30 - 8:45 p.m.**

**Marriott Downtown Waterfront Hotel
Portland, Oregon**

Invited Presentation By
Oregon State Senate President Peter Courtney

In conjunction with the Annual Meeting of the
Seismological Society of America

Co-Sponsors: Oregon Seismic Safety Policy Advisory Commission
Cascadia Region Earthquake Workgroup
Federal Emergency Management Agency
Oregon Emergency Management

A disaster of the proportion that the Pacific Northwest has never seen before lies in wait and yet progress has been slow to reduce the potential loss of life and impacts on our infrastructure and economy. This Town Hall Meeting will present the latest information on the earthquake hazards and associated risks in the Portland metropolitan area and the Pacific Northwest and what steps are and need to be taken to prepare for the Big One.

Speakers include: George Priest and Yumei Wang, Oregon Department of Geology and Mineral Industries; Jed Sampson and Carmen Merlo, City of Portland; Craig Weaver, U.S. Geological Survey; and Ivan Wong, URS Corporation.

For information, please contact Ivan Wong at ivan_wong@urscorp.com

“Keen observation is at least as necessary as penetrating analysis”

Karl Terzaghi



SHANNON & WILSON, INC.
GEOTECHNICAL AND ENVIRONMENTAL CONSULTANTS

www.shannonwilson.com
(503) 223-6147
Lake Oswego, Oregon
Other offices in Washington, Alaska, California, Colorado, Missouri, and Florida

- Deep foundations
- Ground improvement
- Geohazard studies
- Seismic design
- Retaining walls
- Dewatering
- Revetments
- Value engineering
- Waterfront structures
- Tunnels/shafts
- Trenchless technologies
- Landslide studies/mitigation
- Rock slope design
- Forensic failure studies

Spencer Creek Bridge Foundation Design
2009
Beverly Beach, Oregon
For client H.W. Lochner and owner ODOT

CASCADE DRILLING INC.
FULL SERVICE DRILLING

ENVIRONMENTAL GEOTECHNICAL COMMERCIAL

- Air / Mud Rotary & Rock Coring
- Limited Access and Track Equipment
- Dewatering Wells
- Hollow Stem Auger
- Sonic Drilling
- Direct Push (Probe)
- In-Situ Injection
- Vacuum / Air Knife Services

CASCADE DRILLING, INC - PORTLAND
13600 SE AMBLER RD
CLACKAMAS, OR 97015
Office: (503) 775-4118
Fax: (503) 775-4099
www.cascadedrilling.com

| | | | |
|---------------------------------|----------------------------------|-------------------------------------|--------------------------------------|
| SEATTLE (425)485-8908 | PORTLAND (503)775-4118 | SACRAMENTO (916) 638-1169 | LOS ANGELES (562) 929-8176 |
|---------------------------------|----------------------------------|-------------------------------------|--------------------------------------|

NGA Northwest Geophysical Associates

Geophysical Investigations

- Geotechnical
- Environmental
- Groundwater

(541) 757-7231 www.nga.com

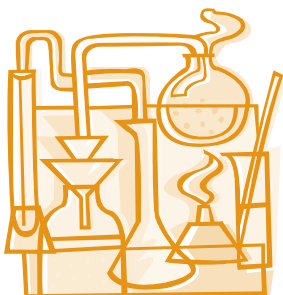
Geo-Tech Explorations
A Division of Boart Longyear Company

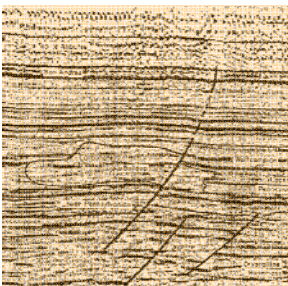
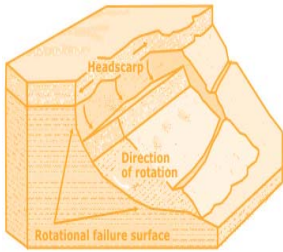
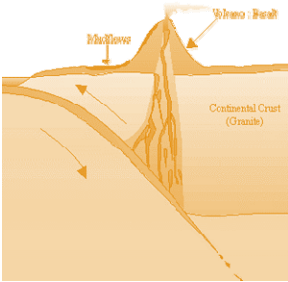
Providing Professional Drilling Services Since 1981

Hollow Stem Auger / Mud Rotary / Air Rotary
Geoprobe / CPT / Bucket Auger / Cable Tool
Reverse Circulation / Pump Services
Well Rehabilitation

**Construction Dewatering Wells
Environmental Investigations
Large Diameter Water Wells
Geotechnical Investigations
Construction Borings
Aquifer Tests**

Phone: 800-275-3885 or 503-692-6400
Fax: 503-692-4759





Western States Soil Conservation, Inc.

There is no limit to the depths we will go



Geotechnical and Environmental Drilling Services
 PO BOX 428 ▪ 3100 Schmidt Lane ▪ Hubbard, Oregon 97032
 (503) 982-1777 Office ▪ (503) 982-8220 Fax
 westernstates@centurytel.net ▪ www.westernstatesoil.com

Thanks For Supporting AEG !

Amec Earth and Environmental, Inc.

Columbia Geotechnical

Cornforth Consultants

Delta Environmental

Geocon NW


Kuper Consulting

Oregon Department of Forestry

Oregon Department of Geology and Mineral Industries

Parametrix

Portland State University



ENVIRONMENTAL & EXPLORATION GEOPHYSICS

22323 East Wild Fern Lane, Brightwood, Oregon 97011 • PH (503) 622-0154 • FAX (503) 622-0526
 WEB <http://www.geopotential.biz/> E-MAIL GeoPotential@geopotential.biz


SUBSURFACE MAPPING SURVEYS

GROUND PENETRATING RADAR SURVEYS

MAGNETOMETER & ELECTROMAGNETIC SURVEYS

GRAVITY SURVEYS

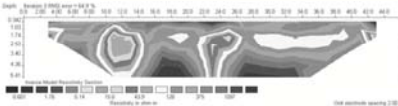
RESISTIVITY SURVEYS



MOBILE LABORATORY

PROJECTS: GEOLOGIC ENGINEERING, ENVIRONMENTAL OIL & MINERAL EXPLORATION, ARCHAEOLOGICAL

LOCATE: VOIDS, UTILITIES STORAGE & SEPTIC TANKS FOUNDATIONS, DRAIN FIELDS WATER WELLS MONITORING WELLS



Section Officers & Committee Chairs



Chair:
Dave Scofield
ACOE
scofield@onemain.com



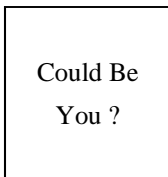
Program Co-Chair:
Michael Marshall
Parametrix
mmarshall@parametrix.com



Legislature Chair:
Dorian Kuper
Kuper Consulting
dorian@kupercon.com



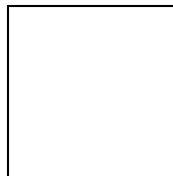
Chair Elect:
Lisa Glonek
Delta Environmental
lglonek@deltaenv.com



Program Co-Chair:
Vacant



Continuing Education Liaison:
Andrew Harvey
drewh1031@earthlink.net



Treasurer:
Kevin Schleh
Geocon NW
Kevin@GeoConNW.com



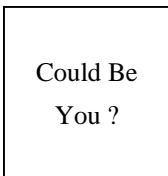
Membership Chair:
Ruth Wilmoth
Columbia Geotechnical, Inc.
ruthwilmoth@comcast.net



Newsletter Editor:
Bill Burns
DOGAMI
bill.burns@dogami.state.or.us



Secretary:
Robin Johnston
Amec Earth & Environmental
Robin.johnston@amec.com



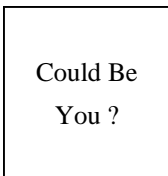
Field-Trip Chair:
Vacant



Webpage Editor:
Darren Beckstrand
Cornforth Consultants
dbeckstrand@



Past Chair:
Jason Hinkle
ODF
jhinkle@odf.state.or.us



History Chair:
Vacant



cornforthconsultants.com
PSU Student Chapter President: Kate Mickelson
kmickels@pdx.edu

The Oregon Section is also on the web at <http://www.aegoregon.org>
National AEG webpage: <http://aegweb.org>

The Oregon Section Newsletter

OREGON SECTION AEG NEWSLETTER is published monthly from September through May. Subscriptions are for members of AEG affiliated with the Oregon Section or other Sections, and other interested people who have requested and paid a local subscription fee of \$10.00. E-mail subscriptions are free. News items are invited and should be sent to: Bill Burns, OR Section AEG Newsletter Editor, Oregon Department of Geology, 800 NE Oregon Street, Portland, OR 97232, e-mail: <bill.burns@dogami.state.or.us>, phone (971) 673-1555. Electronic media is preferred. Deadline for submittal is Friday three weeks before each meeting. Advertising: business card \$100/yr; ¼ page \$200/yr; ½ page \$350/yr. Please notify Bill if you have a change to your email or mailing address.

The Association of Engineering Geologists (AEG) contributes to its members' professional success and the public welfare by providing leadership, advocacy, and applied research in environmental and engineering geology. AEG's values are based on the belief that its members have a responsibility to assume stewardship over their fields of expertise. AEG is the acknowledged international leader in environmental and engineering geology, and is greatly respected for its stewardship of the profession.

