



The Official

OREGON SECTION AEG NEWSLETTER

May Meeting Details

Date: Wednesday May 20th

Location: Old Market Pub

6959 SW Multnomah

Portland, OR

6:00 pm Social

7:00 pm Dinner

8:00 pm Presentation

Dinner: Pizza & Salad

\$15 Dinner (\$5 Students)

Reservations:
mwegner@cornforthconsultants.com
with "AEG Reservation" in
the subject line or 971-222-
2047 by 4pm May 14th.

**There is a \$2 surcharge for
those who do not reserve by
the deadline.**

Upcoming Meetings:



NOTE:
Wednesday
Meeting

The May Meetings Guest Speaker is Edmund Medley Who is the 2009 Jahns Lecturer—The Least You Should Know About Characterizing Geological Chaos

Bimrocks (block-in-matrix rocks) are geologically complex mixtures of rocks and soils, such as melanges, fault rocks, and weathered rocks. Bimrocks present major challenges to geopractitioners because successful and economical characterizations of rock/soil mixtures are frustrated by their geological, spatial and mechanical variability. This Lecture presents broad concepts on characterization, design and construction in bimrocks that have been provocative, yet useful, to geopractitioners around the world.

Bio: Edmund Medley

Edmund Medley, Ph.D., P.E., CEG, F.ASCE, has been named the 2009 Richard H. Jahns Distinguished Lecturer in Engineering Geology, by the Association of Environmental and Engineering Geologists (AEG) and the Engineering Geology Division of the Geological Society of America (GSA). The Jahns award was established in 1988 to commemorate Professor Richard H. Jahns (1915-1983), who had an influential and diverse career in academia, consulting and government. The intent of the partially-funded lectureship is to encourage student and professional awareness of engineering geology through a series of lectures presented across North America during the award year.

A Senior Consultant in the Oakland, California office of Geosyntec Consultants, Dr. Medley has over 30 years of unusually varied international experience in geotechnical and geological engineering consulting, mineral exploration prospecting, failure investigation, litigation testifying and research. He has consulted on major landslides, rockfall hazards, expansive/collapsing soils, tunnel failures, coastal erosion, sinkholes and other ground movements. He is licensed/registered/chartered as an engineer and geologist in the USA, Canada, and the United Kingdom and is affiliated with several international geosciences and engineering organizations, including the GSA and AEG. He was the San Francisco AEG Section Membership Committee Chairman between 1991 and 1993 and the San Francisco Section Short Course Chairman between 1995 and 1996.

Dr. Medley earned his B. Appl. Science in Geological Engineering (1978) from the University of British Columbia, where he was also awarded the first Aro A. Aho Medal for academic excellence in Geological Engineering. His M.S. (1991) and Ph.D. (1994), both in Geotechnical Engineering, are from the University of California at Berkeley. In 1993, he was named AEG's Marliave Scholar for outstanding scholarship in Engineering Geology and Geological Engineering. Medley has presented over 150 professional and academic lectures, Short Courses and MCLE Credit courses and has contributed to about about 50 technical writings, many describing his pioneering approaches to the engineering and geological characterization of bimrocks (block-in-matrix rocks), complex geological mixtures of rock and soil such as melanges, fault rocks and weathered rocks.



“Keen observation is at least as necessary as penetrating analysis”

Karl Terzaghi



SHANNON & WILSON, INC.
GEOTECHNICAL AND ENVIRONMENTAL CONSULTANTS

www.shannonwilson.com
(503) 223-6147
Lake Oswego, Oregon
Other offices in Washington, Alaska, California, Colorado, Missouri, and Florida

- Deep foundations
- Ground improvement
- Geohazard studies
- Seismic design
- Retaining walls
- Dewatering
- Revetments
- Value engineering
- Waterfront structures
- Tunnels/shafts
- Trenchless technologies
- Landslide studies/mitigation
- Rock slope design
- Forensic failure studies

Spencer Creek Bridge Foundation Design
2008
Beverly Beach, Oregon
For client H.W. Loehner and owner ODOT

CASCADE DRILLING INC.
FULL SERVICE DRILLING

ENVIRONMENTAL GEOTECHNICAL COMMERCIAL

- Air / Mud Rotary & Rock Coring
- Limited Access and Track Equipment
- Dewatering Wells
- Hollow Stem Auger
- Sonic Drilling
- Direct Push (Probe)
- In-Situ Injection
- Vacuum / Air Knife Services

CASCADE DRILLING, INC - PORTLAND
13600 SE AMBLER RD
CLACKAMAS, OR 97015
Office: (503) 775-4118
Fax: (503) 775-4099
www.cascadedrilling.com

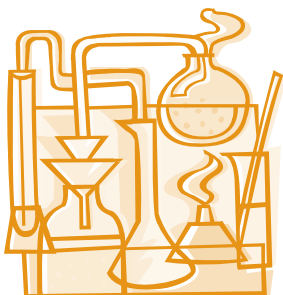
SEATTLE (425)485-8908	PORTLAND (503)775-4118	SACRAMENTO (916) 638-1169	LOS ANGELES (562) 929-8176
---------------------------------	----------------------------------	-------------------------------------	--------------------------------------

NGA Northwest Geophysical Associates

Geotechnical
Environmental
Groundwater

**Get more information
about the subsurface**

(541) 757-7231 www.nga.com



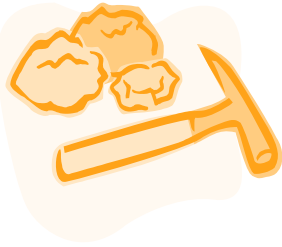
Geo-Tech Explorations
A Division of Boart Longyear Company

Providing Professional Drilling Services Since 1981

Hollow Stem Auger / Mud Rotary / Air Rotary
Geoprobe / CPT / Bucket Auger / Cable Tool
Reverse Circulation / Pump Services
Well Rehabilitation

Construction Dewatering Wells
Environmental Investigations
Large Diameter Water Wells
Geotechnical Investigations
Construction Borings
Aquifer Tests

Phone: 800-275-3885 or 503-692-6400
Fax: 503-692-4759



Message From The Chair

I attended the AEG Mid Year Board Meeting in Seattle last month. In short, the association is doing well, due to outstanding work by AEG's Executive Committee and to the success of recent annual meetings. The biggest current challenge facing the association is retaining and increasing membership in the current economic climate. The association is working on improving services to the membership with a focus on overhauling the website to make it even better. The other major item to report on from the Board Meeting was the healthy discussion on the Joint Task Force on Areas of Practice. A number of Board Members, including myself, spoke out against accepting the current draft document. The Board ultimately decided to create an ad hoc committee to review the comments provided by AEG

members and to further assess the issue. This committee will report back to the Board at a later date this summer. More to come on this issue.

We had another great Student Night Meeting at Portland State University last month. The students had some excellent posters on display and \$600 in awards were handed out to the top four posters. While we had excellent student turn out with students from at least three universities, unfortunately, turn out from our professional members has dwindled over the years. We are aware of several likely contributing factors to this trend and we will be working to identify and properly address these so that next year's Student Night will be the best yet. The two biggest changes will involve moving the event

off campus and stream-lining the judging process. We would like to see a lot more professionals show up for Student Night next year so let me know if you have any ideas on how to get more professionals to attend.

This month is our last meeting until the fall and we have a very dynamic speaker lined up, Dr. Ed Medley, the current AEG Jahns Lecturer. He is coming up from the Bay Area to present on one of his specialties, bim-rocks (block-in-matrix rocks). I am really looking forward to this meeting and I hope to see you there.


AEG Oregon Section Chair
Jason Hinkle

Thanks For Supporting AEG !

Columbia Geotechnical
Cornforth Consultants
Delta Environmental
Geocon NW
Kuper Consulting

Oregon Department of Forestry
Oregon Department of Geology and Mineral Industries
Parametrix
Portland State University





ENVIRONMENTAL & EXPLORATION GEOPHYSICS
22323 East Wild Fern Lane, Brightwood, Oregon 97011 • PH (503) 622-0154 • FAX (503) 622-0526
WEB <http://www.geopotential.biz/> E-MAIL GeoPotential@geopotential.biz


SUBSURFACE MAPPING SURVEYS

**GROUND PENETRATING
RADAR SURVEYS**

**MAGNETOMETER &
ELECTROMAGNETIC
SURVEYS**

**GRAVITY
SURVEYS**

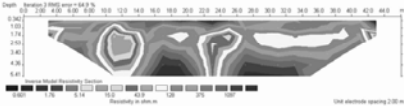
**RESISTIVITY
SURVEYS**



**MOBILE
LABORATORY**

**PROJECTS: GEOLOGIC
ENGINEERING, ENVIRONMENTAL
OIL & MINERAL EXPLORATION
ARCHAEOLOGICAL**

**LOCATE: VOIDS, UTILITIES
STORAGE & SEPTIC TANKS
FOUNDATIONS, DRAIN FIELDS
WATER WELLS
MONITORING WELLS**



Section Officers & Committee Chairs



Chair:
Jason Hinkle
ODF
jhinkle@odf.state.or.us



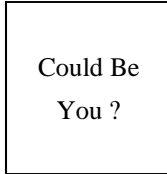
Program Co-Chair:
Michael Marshall
Parametrix
mmarshall@parametrix.com



Legislature Chair:
Dorian Kuper
Kuper Consulting
dorian@kupercon.com



Chair Elect:
Dave Scofield
ACOE
scofield@onemain.com



Program Co-Chair:
Vacant



Continuing Education Liaison:
Andrew Harvey
drewh1031@earthlink.net



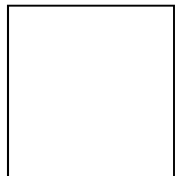
Secretary:
Lisa Glonek
Delta Environmental
lglonek@deltaenv.com



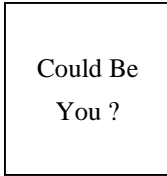
Membership Chair:
Ruth Wilmoth
Columbia Geotechnical, Inc.
ruthwilmoth@comcast.net



Newsletter Editor:
Bill Burns
DOGAMI
bill.burns@dogami.state.or.us



Treasurer:
Kevin Schleh
Geocon NW
Kevin@GeoConNW.com



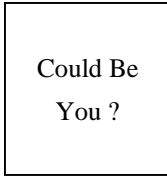
Field-Trip Chair:
Vacant



Webpage Editor:
Darren Beckstrand
Cornforth Consultants
dbeckstrand@
cornforthconsultants.com



Past Chair:
Matt Brunengo
PSU
mbrunengo@aol.com



History Chair:
Vacant



PSU Student Chapter President:
Serin Duplantis
serin@pdx.edu

The Oregon Section is also on the web at <http://www.aegoregon.org>
National AEG webpage: <http://aegweb.org>

The Oregon Section Newsletter

OREGON SECTION AEG NEWSLETTER is published monthly from September through May. Subscriptions are for members of AEG affiliated with the Oregon Section or other Sections, and other interested people who have requested and paid a local subscription fee of \$10.00. E-mail subscriptions are free. News items are invited and should be sent to: Bill Burns, OR Section AEG Newsletter Editor, Oregon Department of Geology, 800 NE Oregon Street, Portland, OR 97232, e-mail: <bill.burns@dogami.state.or.us>, phone (971) 673-1555. Electronic media is preferred. Deadline for submittal is Friday three weeks before each meeting. Advertising: business card \$100/yr; ¼ page \$200/yr; ½ page \$350/yr. Please notify Bill if you have a change to your email or mailing address.

The Association of Engineering Geologists (AEG) contributes to its members' professional success and the public welfare by providing leadership, advocacy, and applied research in environmental and engineering geology. AEG's values are based on the belief that its members have a responsibility to assume stewardship over their fields of expertise. AEG is the acknowledged international leader in environmental and engineering geology, and is greatly respected for its stewardship of the profession.

