



**The Official**

# **OREGON SECTION AEG NEWSLETTER**

## **April Meeting Details**

**Date:** Tuesday April 21st

**Location:** PSU Smith Union  
1825 SW Broadway

**Portland, OR**

**6:00 pm Social**

**7:00 pm Dinner**

**8:00 pm Presentation**

**Dinner: Burrito Bar**

**\$20 Dinner (\$5 Students)**

**Reservations:**  
mwegner@cornforthconsultants.com  
with **"AEG Reservation"** in  
the subject line or 971-222-  
2047 by 4pm April 16th

**There is a \$2 surcharge for  
those who do not reserve by  
the deadline.**

## **Upcoming Meetings:**

- **May 19: Ed Medley**



## **The April Meeting is the Annual AEG Student Night !**

The 7th annual Student Poster Night will be hosted by the PSU student chapter of AEG on April 21, 2009. A poster session will highlight the academic activities and research of graduate and undergraduate students from Oregon universities. The structure of our event will be similar to the AEG Oregon Section meetings, with dinner and drinks served. However, instead of a single, professional presentation following dinner, a poster session will be held giving students a chance to showcase their recent work. Students from all universities in Oregon and Idaho are encouraged to attend and submit a poster. Participants are not required to be AEG members. Poster topics should preferably be within the field of applied geology and can range from term projects to thesis research for undergraduate and graduate students. A committee from the AEG Oregon Section will be judging the posters and awarding a number of \$100 and \$200 prizes for outstanding posters. Please contact the Portland State University, AEG Student Chapter President, Serin Duplantis, with any questions, serin@pdx.edu.

### Event Details:

Date: April 21, 2009 at 6:00-9:00pm, Ticket sales at the door from 6:00-8:00pm

Room: Parkway North, first door on left, using Park Blocks entrance to Smith Memorial Union, Portland State University, 1825 SW Broadway, Portland, OR 97201

Costs for Dinner: Students \$5.00, Non-students \$20.00. Beverages included.

Street parking and parking in Parking Structure 1 is available at the posted rates. Free parking after 7pm.

If you have any questions please send them to aegeol@pdx.edu.

### Poster Titles:

"Analysis of Pleistocene Loess Thickness in the Coastal Dune Sheets around Newport, Oregon" Keith Olson (PSU)

"Andesites/Dacites of the Oceanic Narcondam Volcano, Andaman Sea: Modification of Tholeiitic Arc Basalts by Crustal Contamination and Amphibole-Dominated Fractionation" Aspen Gillam (PSU)

"Coarse-grained overgrowths - an indication of shock effects in stony meteorites" Niina Jamsja and Alex Ruzicka (PSU)

"Do modern soil carbonates reflect local meteoric water in the Argentine Andes?" Kendra Williams (PSU)

"Effect of Surface Roughness on the Thermal Infrared Spectral Characteristics of Mars-Relevant Silica-Rich Materials" Jeff Berger (PSU)

"Examining characteristics of fault segmentation using past earthquake histories and slip in their last events on the Coyote Creek and Superstition Mountain faults, southern California" Danielle Verdugo (SDSU)

"GIS Applications in Watershed Analysis: A Case Study from the Sixes River Basin, Curry County, Oregon" Matthew Buche and Ryan Stanley (WOU)

"Numerical Model investigation of Crane Glacier response to collapse of the Larsen B ice shelf, Antarctic Peninsula" Adam Campbell (PSU)

"Numerical modeling of heat transfer: Potential application for the study of differentiated asteroids" Niina Jamsja (PSU)

"Occurrence and Distribution of Rhyolitic Magma Types during John Day Time, Northeastern Oregon" Christopher Ricker (PSU)

"Relative Dating of Soils within the Bridge of the Gods Landslide Complex, Skamania County, Washington" Serin Duplantis and Kate Mickelson (PSU)



## 2009 Geological Society of America Annual Meeting Call for Abstracts

We are very fortunate to have the annual GSA meeting in Portland this coming fall (October 2009). It presents an excellent opportunity for the AEG community. The abstract submission period is now open and can be located at <http://www.geosociety.org/meetings/2009/sessions/topical.asp>

Several of the proposed sessions have engineering geology topics and need abstracts submitted in order to be viable sessions. Below are several that maybe of interest.

### **T13. Hydrogeomorphic and Ecohydrologic Consequences of Extraordinary Sediment Loading**

GSA Quaternary Geology and Geomorphology Division; GSA Sedimentary Geology Division. Session Chairs: Jon Major, Jim O'Connor. Many natural and anthropogenically induced events deliver sediment to rivers in amounts that greatly exceed mean annual loads. We seek contributions that examine the physical and biological consequences (at all scales-of extraordinary sediment inputs to river systems).

### **T142. Applications of Landslide Inventories: Creating Hazard Maps and Guiding Policy**

GSA Geology and Society Division; Association of Environmental and Engineering Geologists (AEG); GSA Geology and Public Policy Committee. Session Chairs: William J. Burns, Matt Crawford, Lynn Highland, and Helen Delano. The session is designed to gather and share information on the value of landslide inventories and their use toward risk reduction, including creation of hazard maps and policy guidelines.

### **T143. Debris Flows**

GSA Engineering Geology Division; GSA Quaternary Geology and Geomorphology Division. Session Chairs: Richard M. Iverson, Jonathan Godt, William Schulz. This session will include presentations on all aspects of debris flows, including initiation processes, flow mechanics and modeling, depositional processes and products, magnitude-frequency relations, and methods of hazard assessment.

### **T144. Landslides in the Pacific Northwest: Advances in Research and Practice**

GSA Engineering Geology Division; The Association of Environmental and Engineering Geologists (AEG); U.S. Geological Survey; GSA Quaternary Geology and Geomorphology Division. Session Chairs: William J. Burns, Jeffrey A. Coe, Rex L. Baum. This session will explore recent advances in understanding landslides and landslide hazards in the Pacific Northwest. The session encourages contributions from landslide researchers and practitioners that address problems associated with any type of landslide.

### **T145. Use of High-Resolution Lidar DEMs for Geologic, Geomorphic and Geohazards Mapping**

Session Chairs: Ian Madin. High resolution lidar DEMs are becoming widely available, and can revolutionize geomorphic, geohazards and geologic mapping. This session will provide current examples of the use of this data.



*“Keen observation is at least as necessary as penetrating analysis”*

*Karl Terzaghi*



**SHANNON & WILSON, INC.**  
GEOTECHNICAL AND ENVIRONMENTAL CONSULTANTS

www.shannonwilson.com  
(503) 223-6147  
Lake Oswego, Oregon  
Other offices in Washington, Alaska, California, Colorado, Missouri, and Florida

- Deep foundations
- Ground improvement
- Geohazard studies
- Seismic design
- Retaining walls
- Dewatering
- Revetments
- Value engineering
- Waterfront structures
- Tunnels/shafts
- Trenchless technologies
- Landslide studies/mitigation
- Rock slope design
- Forensic failure studies

Spencer Creek Bridge Foundation Design  
2008  
Beverly Beach, Oregon  
For client H.W. Loehner and owner ODOT

**CASCADE DRILLING INC.**  
FULL SERVICE DRILLING

ENVIRONMENTAL GEOTECHNICAL COMMERCIAL

- Air / Mud Rotary & Rock Coring
- Limited Access and Track Equipment
- Dewatering Wells
- Hollow Stem Auger
- Sonic Drilling
- Direct Push (Probe)
- In-Situ Injection
- Vacuum / Air Knife Services

CASCADE DRILLING, INC - PORTLAND  
13600 SE AMBLER RD  
CLACKAMAS, OR 97015  
Office: (503) 775-4118  
Fax: (503) 775-4099  
www.cascadedrilling.com

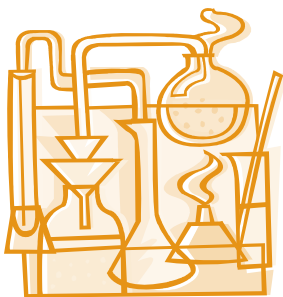
SEATTLE (425)485-8908	PORTLAND (503)775-4118	SACRAMENTO (916) 638-1169	LOS ANGELES (562) 929-8176
--------------------------	---------------------------	------------------------------	-------------------------------

**NGA** Northwest Geophysical Associates

Geotechnical  
Environmental  
Groundwater

**Get more information about the subsurface**

(541) 757-7231 www.nga.com



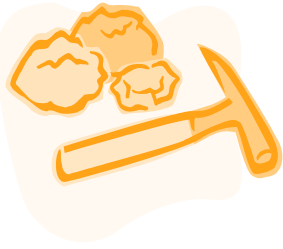
**Geo-Tech Explorations**  
A Division of Boart Longyear Company

**Providing Professional Drilling Services Since 1981**

Hollow Stem Auger / Mud Rotary / Air Rotary  
Geoprobe / CPT / Bucket Auger / Cable Tool  
Reverse Circulation / Pump Services  
Well Rehabilitation

Construction Dewatering Wells  
Environmental Investigations  
Large Diameter Water Wells  
Geotechnical Investigations  
Construction Borings  
Aquifer Tests

Phone: 800-275-3885 or 503-692-6400  
Fax: 503-692-4759



## Message From The Chair

Please let me know if you have any messages you would like me to deliver to AEG's leadership at our Mid Year Board Meeting in Seattle next week. As the Oregon Section Chair, I will be representing the Oregon Section on AEG's Board of Directors. The Joint Task Force on Areas of Practice is one topic that is sure to come up next week. I will ask my fellow Board Members to reject the current draft of the Joint Task Force document and to request

more time to make the significant changes necessary for this document to be of benefit to our profession. Look for a summary of the meeting in next month's newsletter.

I strongly encourage all of our professional members to support the future of our profession by attending our Annual Student Night on April 21st. This is an excellent opportunity to engage students in a conversation about geology and what it takes to become employed as

a geologist. The students have worked hard to put on an entertaining evening and I would like to see a lot of potential employers turn out to support them. This means you! See you there!

AEG Oregon Section Chair  
Jason Hinkle




## Thanks For Supporting AEG !

Columbia Geotechnical  
Cornforth Consultants  
Delta Environmental  
Geocon NW  
Kuper Consulting

Oregon Department of Forestry  
Oregon Department of Geology and Mineral Industries  
Parametrix  
Portland State University






ENVIRONMENTAL & EXPLORATION GEOPHYSICS  
22323 East Wild Fern Lane, Brightwood, Oregon 97011 • PH (503) 622-0154 • FAX (503) 622-0526  
WEB <http://www.geopotential.biz/> E-MAIL [GeoPotential@geopotential.biz](mailto:GeoPotential@geopotential.biz)

### SUBSURFACE MAPPING SURVEYS

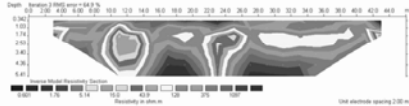
**GROUND PENETRATING RADAR SURVEYS**  
**MAGNETOMETER & ELECTROMAGNETIC SURVEYS**  
**GRAVITY SURVEYS**  
**RESISTIVITY SURVEYS**



MOBILE LABORATORY

**PROJECTS: GEOLOGIC ENGINEERING, ENVIRONMENTAL OIL & MINERAL EXPLORATION, ARCHAEOLOGICAL**

**LOCATE: VOIDS, UTILITIES STORAGE & SEPTIC TANKS FOUNDATIONS, DRAIN FIELDS WATER WELLS MONITORING WELLS**



Depth: 0.00m (0.00m) 0.10m 0.20m 0.30m 0.40m 0.50m 0.60m 0.70m 0.80m 0.90m 1.00m 1.10m 1.20m 1.30m 1.40m 1.50m 1.60m 1.70m 1.80m 1.90m 2.00m 2.10m 2.20m 2.30m 2.40m 2.50m 2.60m 2.70m 2.80m 2.90m 3.00m 3.10m 3.20m 3.30m 3.40m 3.50m 3.60m 3.70m 3.80m 3.90m 4.00m 4.10m 4.20m 4.30m 4.40m 4.50m 4.60m 4.70m 4.80m 4.90m 5.00m

Scale: 1:1000  
Resolution: 0.1m  
Accuracy: ± 0.1m

Use electrode spacing 2.00m.

## Section Officers & Committee Chairs



Chair:  
Jason Hinkle  
ODF  
jhinkle@odf.state.or.us



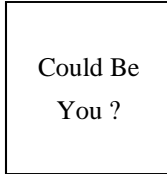
Program Co-Chair:  
Michael Marshall  
Parametrix  
mmarshall@parametrix.com



Legislature Chair:  
Dorian Kuper  
Kuper Consulting  
dorian@kupercon.com



Chair Elect:  
Dave Scofield  
ACOE  
scofield@onemain.com



Program Co-Chair:  
Vacant



Continuing Education Liaison:  
Andrew Harvey  
drewh1031@earthlink.net



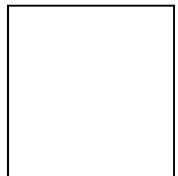
Secretary:  
Lisa Glonek  
Delta Environmental  
lglonek@deltaenv.com



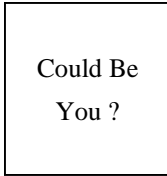
Membership Chair:  
Ruth Wilmoth  
Columbia Geotechnical, Inc.  
ruthwilmoth@comcast.net



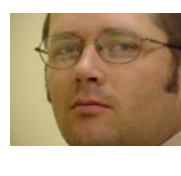
Newsletter Editor:  
Bill Burns  
DOGAMI  
bill.burns@dogami.state.or.us



Treasurer:  
Kevin Schleh  
Geocon NW  
Kevin@GeoConNW.com



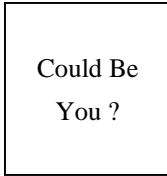
Field-Trip Chair:  
Vacant



Webpage Editor:  
Darren Beckstrand  
Cornforth Consultants  
dbeckstrand@cornforthconsultants.com



Past Chair:  
Matt Brunengo  
PSU  
mbrunengo@aol.com



History Chair:  
Vacant



PSU Student Chapter President:  
Serin Duplantis  
serin@pdx.edu

The Oregon Section is also on the web at <http://www.aegoregon.org>  
National AEG webpage: <http://aegweb.org>

## The Oregon Section Newsletter

OREGON SECTION AEG NEWSLETTER is published monthly from September through May. Subscriptions are for members of AEG affiliated with the Oregon Section or other Sections, and other interested people who have requested and paid a local subscription fee of \$10.00. E-mail subscriptions are free. News items are invited and should be sent to: Bill Burns, OR Section AEG Newsletter Editor, Oregon Department of Geology, 800 NE Oregon Street, Portland, OR 97232, e-mail: <bill.burns@dogami.state.or.us>, phone (971) 673-1555. Electronic media is preferred. Deadline for submittal is Friday three weeks before each meeting. Advertising: business card \$100/yr; ¼ page \$200/yr; ½ page \$350/yr. Please notify Bill if you have a change to your email or mailing address.

The Association of Engineering Geologists (AEG) contributes to its members' professional success and the public welfare by providing leadership, advocacy, and applied research in environmental and engineering geology. AEG's values are based on the belief that its members have a responsibility to assume stewardship over their fields of expertise. AEG is the acknowledged international leader in environmental and engineering geology, and is greatly respected for its stewardship of the profession.

