



The Official

OREGON SECTION AEG NEWSLETTER

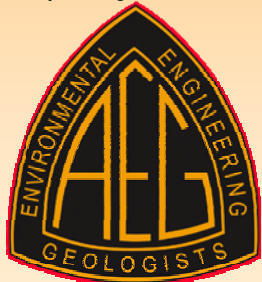
October Meeting Details

Date: Tuesday, October 16
Location: Old Market Pub
 6959 SW Multnomah
 Portland, OR
6:00 pm Social
7:00 pm Dinner
8:00 pm Presentation
Dinner: Pizza & Salad
\$14 Dinner (\$7 Students)

Reservations:
 mwegner@cornforthconsultants.com
 with "AEG Reservation" in
 the subject line or 971-222-
 2047 by 4pm Thursday Octo-
 ber 11th .
 There is a \$2 surcharge for
 those who do not reserve by
 the deadline.

Upcoming Meetings:

- November 14: Dorian Kuper, TBA
- December 18: Ken Cameron, Mt. Hood Debris Flows
- January 15: Joint Meeting with ASCE, TBA
- February 19, Ivan Wong, Seismicity in Oregon



Septembers Meetings Guest Speaker is Andrew Fountain from Portland State University Presentation: Sea Level Change

Sea level change is perhaps the most immediate, most expensive, and most global of all of the climate change processes today. Much of Florida is within 1 meter elevation of sea level and much of our oil refining capacity is located along our shores. In addition to sea level rise, storm surge multiplies local effective sea level and landscape inundation can be quite extensive. So it makes sense to track sea level change.

Sea level rise is due to two factors, thermal expansion of the

ocean waters, due to atmospheric warming, and runoff from melting glaciers and ice sheets. Glaciers and ice sheets store massive volumes of water on the continents and account for the dramatic sea level changes inferred over the past million years.

The presentation will summarize what is currently

known about sea level rise and will focus on the contributions made by glaciers and ice sheets. The ice sheets present an intriguing challenge because we do not understand much of the basic

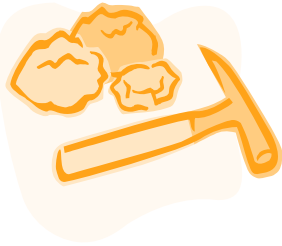


Bio: Andrew G. Fountain, PhD

Andrew G. Fountain, PhD spent 16 years working for the US Geological Survey studying the hydrology and mass balance of glaciers. After leaving the USGS in 1994 he came to work at Portland State University where he is now full professor in the Departments of Geology and Geography. He is the current chair of Geology. His work started in the North Cascade Range of Washington and has taken him to a variety of studies in Alaska, several alpine locations in the continental US, and an extensive study in Sweden. He has also been working on several glaciers in the McMurdo Dry Valleys, Antarctica. His current studies are on the mass balance and water flow from glaciers in Antarctica and on the century of glacier change in the western US, exclusive of Alaska.

He has his B.S. from St. Lawrence University; M.S. from the University of Alaska; and Ph.D. from the University of Washington. He is currently a serving member on the National Academy of Sciences' Polar Research Board.





Message From The Chair

AEG's 50th annual meeting in Los Angeles made for a long week and a great show: three days of talks and posters; field trips and short courses before and after; and the board meeting over the last weekend. (Oh, and opportunities throughout for social bonding over potables and comestibles.) Attendance flirted with the all-time-largest mark, with almost 800 registrants. On a quick scan of the list, I counted at least 15 Oregon Section members there, about one-third of them students. The meeting hotel sits on a hill just north of the main Hollywood ridge, with great views (on my side, anyway) of Universal Studios, the San Fernando Valley (including beautiful downtown Burbank, such as it is), and the San Gabriel Mountains in the distance – and, as it had conveniently rained just prior to the meeting, the air was surprisingly clear.

The fine weather also made for good field trips, including the one I attended to the St. Francis Dam disaster site and La Conchita landslide. Besides presenting his reinterpretation of the causes of the dam failure in 1928 (probably 600 dead), and the causes of different kinds of movement in the coastal bluffs west of Ventura

(slump-earthflow in 1995, debris flow in 2005, the latter causing 10 fatalities), David Rogers and colleagues discussed the persistent problems at the intersection of engineering geology and politics, from the 1920s to the present. Other groups visited the San Andreas Fault, Catalina Island, coastal erosion sites, and fire-rehabilitation projects.

If you haven't noticed, the 2008 meeting will be in New Orleans, and the local committee was busy drumming up interest (and handing out chains of beads) for that conference. I expect some interesting field trips there, too.

Oh, and I suppose I should mention that the Oregon Section cleaned up in the awards department. Check the full (I hope) list below in this newsletter – the biggie is that Oregon won the honors as Outstanding Section for 2007. Your officers aren't exactly sure how we did that – but we're pretty sure it was riding the coat-tails of the Portland State students (and chief advisor and whip Scott Burns), who won their own Outstanding Student Chapter award, plus a bunch of other scholarships. A little back-slapping would be in order when next you see these folks.

The board of directors meeting was packed with reports, information and action items, but our new president Dorian Kuper actually got us out a bit early on both days (despite – or maybe due to – fighting a cold). The landslide conference in Vail, cosponsored and run by AEG, was a great success both technically and financially; much of the "profit" went into Foundation accounts. We approved a revision to the association by-laws, creation of a new Arizona Section, and corporate governance measures (such as whistle-blowers protection and document retention policies); and discussed finances, future meetings, possible new awards, etc.

The speaker for October's meeting is Andrew Fountain, a glaciologist (and new Geology Department chairman) at Portland State. Since I won't be able to introduce him then, I'll get my two cents in now: not only is he a knowledgeable and stimulating speaker, but he is a colleague, a friend, and my academic supervisor – so be nice to him.

Matt Brunengo
AEG Oregon Section Chair

AEG National Meeting 2007 Update: Oregon Section and PSU Students Clean Up The Awards !

Outstanding Section Award, 2007:

Oregon Section

Outstanding Student Chapter Award, 2007:

Portland State University

Lemke Fund Grants:

Portland State University

Stout Scholar, Graduate Division:

Adam Campbell, PSU

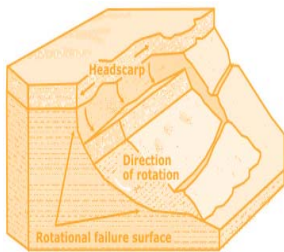
Tilford Field Study Scholarship, Masters

Graduate Division:

Scott Braunsten, PSU

Platinum Corporate Sponsors Awards

Marina Drazba, PSU



Oregon Section AEG T-Shirt Design Contest

It was suggested to make Oregon Section AEG T-shirts this year and to have a T-shirt Design Contest. The shirts will have the AEG logo, etc on the front, but the back needs a design of some type that highlights the Oregon Section of AEG. Maybe our Outstanding section award?!?! Please submit the designs to Bill Burns (info below) prior to January 1, 2008 in digital or paper format. The designs will be voted on by the Board and the winner to go on the shirts.

Bill Burns, 800 NE Oregon Street, Portland, OR 97232 or bill.burns@dogami.state.or.us



Oregon's Earth Science Week 2007 Kick Off Meeting 5pm Tuesday, October 16th

What: Earth Science Week Meeting. If you plan to participate in ESW 2007 (October 14-20), this is the only planning meeting you need to attend.

Come to pick up your ESW packet and discuss ideas for ESW presentations, including visual aids and rock samples. If possible, decide on your school(s) or speaking venues before this meeting.

Who: ESW Volunteers (those of you who signed up, want to volunteers, and potential volunteers)

Where: Old Market Pub, 6959 Multnomah, Portland, OR

When: Meet at 5:00 pm before AEG Dinner meeting

Description: Oregon geologists are planning the second annual Kick-Off to celebrate Earth Science Week for this October 14-20. The Oregon Department of Geology and Mineral Industries, the Association of Engineering Geologists Oregon Section, and others will co-host Earth Science Week (ESW) education activities to occur on the second week in October every year.

Volunteers will receive an Earth Science Week Information Kit(s) at the meeting on October 16th and will share the kit and their first-hand geology knowledge in a classroom(s) of their choice. Each are encouraged to locate a classroom (e.g., your child's or neighbor's child's class) or com-

munity organization (e.g., Rotary, neighborhood organization, etc.) to speak to or DOGAMI and AEG can assist by providing contacts.

The Kits will be supplied by the American Geological Institute (AGI) and supplemented with materials by DOGAMI and the USGS Cascade Volcano Observatory in Vancouver, WA. For more info, check out www.earthsciweek.org

If you have questions, please contact Drew Harvey (503-417-7693; andrew.harvey@pbsenv.com) or Bill Burns (971-673-1538; bill.burns@dogami.state.or.us)



*“Keen observation is at
least as necessary as
penetrating analysis”*

Karl Terzaghi

Job Opportunity: Utah Geological Survey Seeks New HAZARDS PROGRAM MANAGER

The Utah Geological Survey seeks applications for the position of Manager of the Geologic Hazards Program, to begin in January 2008. The Utah Geological Survey is the State's principal agency assigned to identify, inventory, assess, and mitigate Utah's geologic hazards to promote safe and responsible land use. The Geologic Hazards Program comprises 10-12 staff to identify and characterize geologic hazards and prepare geologic-hazard maps. It promotes hazard reduction by disseminating information and assisting government and private-sector users through publications and databases, website information, conferences and workshops, and participation on committees, panels, advisory and review boards, and working groups.

Candidates should have at least a M.S. degree in geology and be licensed as a Professional Geologist in Utah, or meet the qualifications to become licensed, and have experience in program management and supervision. Technical skills and research interests should include engineering geology, Quaternary geology, applied geology, geomorphology, neotectonics, and earthquake- and landslide-hazard assessment.

For a complete announcement and instructions on how to apply, please visit the State of Utah web site at: <http://jobs.utah.gov> after Sept. 1. For further information, contact Rick Allis, UGS Director, at rickallis@utah.gov or 801-537-3300.

The Oregon Section Newsletter

OREGON SECTION AEG NEWSLETTER is published monthly from September through May. Subscriptions are for members of AEG affiliated with the Oregon Section or other Sections, and other interested people who have requested and paid a local subscription fee of \$10.00. E-

mail subscriptions are free. News items are invited and should be sent to: Bill Burns, OR Section AEG Newsletter Editor, Oregon Department of Geology, 800 NE Oregon Street, Portland, OR 97232, e-mail: bill.burns@dogami.state.or.us, phone (971) 673-1555. Electronic

media is preferred. Deadline for submittal is Friday three weeks before each meeting. Advertising: business card \$10/mo, \$100/yr; ¼ page \$30/mo, \$200/yr; ½ page \$35/mo, \$350/yr. Please notify Bill if you have a change to your email or mailing address.



The Oregon Section is also on the web at <http://www.aegoregon.org>
National AEG webpage: <http://aegweb.org>

Thanks For Supporting AEG !

AMEC

Columbia Geotechnical

Cornforth Consultants

Oregon Department of Geology and
Mineral Industries (DOGAMI)

Geo-Tech Explorations

GRI

Kuper Consulting

Northwest Geophysical Assoc.

Oregon Department of Forestry (ODF)

PBS Engineering and Environmental


PSI

Portland State University

Geo-Tech Explorations
A Division of Boart Longyear Company

Providing Professional Drilling Services Since 1981

Hollow Stem Auger / Mud Rotary / Air Rotary
Geoprobe / CPT / Bucket Auger / Cable Tool
Reverse Circulation / Pump Services
Well Rehabilitation



Construction Dewatering Wells
Environmental Investigations
Large Diameter Water Wells
Geotechnical Investigations
Construction Borings
Aquifer Tests

Phone: 800-275-3885 or 503-692-6400
Fax: 503-692-4759



Section Officers & Committee Chairs



Chair:
Matt Brunengo
PSU and WA DNR
mbrunengo@aol.com

Program Co-Chair:
Roland Brady
???
brady_geology@msn.com



Legislature Chair:
Dorian Kuper
Kuper Consulting
dkuper@cybcon.com



Chair Elect:
Jason Hinkle
ODF
jhinkle@odf.state.or.us



Program Co-Chair:
Michael Marshall
Paramatrix
mmarshall@paramatrix.com



Continuing Education Liaison:
Andrew Harvey
PBS
andrewharvey@pbsenv.com



Secretary:
Dave Scofield
ACOE
scofield@onemain.com



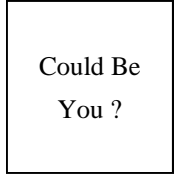
Membership Chair:
Ruth Wilmoth
Columbia Geotechnical, Inc.
ruthwilmoth@comcast.net



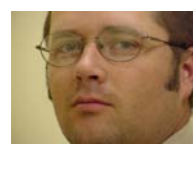
Newsletter Editor:
Bill Burns
DOGAMI
bill.burns@dogami.state.or.us



Treasurer:
Lisa Glonek
Hart Crowser, Inc.
lisa.glonek@hartcrowser.com



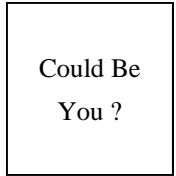
Field-Trip Chair:
Vacant



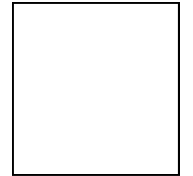
Webpage Editor:
Darren Beckstrand
Cornforth Consultants
dbeckstrand@



Past Chair:
Michael Zimmerman
GRI, Inc.
mzimmerman@gri.com



History Chair:
Vacant



cornforthconsultants.com
PSU Student Chapter President:
???

Photo of the Month



The October photo is from Steve Mumma from the Geobrugg. This photo is of an August 2007 impact on a 12' high, 180 ft-ton design energy rockfall barrier installed at a residential development in Telluride, CO. The boulder shown is approximately 40 tons and originated from a cliff upslope of the barrier. The boulder rolled down the slope, leaving a trough in the ground and a path of flattened trees before being stopped by the rockfall barrier.

For more information see <http://www.geobrugg.com>

To submit a photo, please email the picture in a JPEG or TIF format to bill.burns@dogami.state.or.us. Also include a short paragraph describing the photo and project.