



The Official

OREGON SECTION AEG NEWSLETTER

January Meeting Details

JOINT ASCE-AEG Meeting !

Date: Tuesday, January 16

Location: Kennedy School

5736 NE 33rd Avenue

Portland, OR

6:00 pm Social

7:00 pm Dinner

8:00 pm Presentation

Dinner: Pasta Buffet

\$35 Dinner (\$18 Students)

Reservations:
mwegner@cornforthconsultants.com
with "AEG Reservation" in
the subject line or 971-222-
2047 by 4pm Thursday De-
cember 14th.

**There is a \$2 surcharge for
those who do not reserve by
the deadline.**

Upcoming Meetings:

- 2/20/07 Chris Goldfinger: Record of Cascadia Earthquakes
- 3/20/07 John Moylan: TBA
- 4/17/07 PSU Student Night
- 5/15/07 Terry West: TBA



January Meetings Guest Speaker is Kristie Hartfeil from U.S. Army Corps of Engineer's -Presentation: The USACE's Use of Screening Portfolio Risk Analysis

Almost 65 percent of the 569 dams managed by the U.S. Army Corps of Engineers are over 30 years old, and 28 percent have reached or exceeded their 50-year design life. Many are in need of major repair or rehabilitation to ensure their continued safety for future generations. All Federal and State agencies responsible for the design, construction, operation, or regulation of water resources projects have recognized the need for making sound investment decisions regarding dam safety. With the increasing demand on available resources, government agencies have searched for a systematic method for prioritizing needed repairs to their dams.

The Risk Analysis for Dam

Safety Program is providing the methodology and tools necessary to accomplish this goal. In the portfolio risk assessment, all dams in the portfolio are evaluated and ranked in terms of existing risk and the cost effectiveness of risk-reducing investments. The goal is to determine the most efficient allocation of investments in dam safety improvements for a group of dams. Two levels of portfolio risk assessment are being completed.

The initial level, the Screening Portfolio Risk Analysis (SPRA), relies on knowledgeable individuals to assess the relative risk of dams in terms of several criteria based on available information. This screening level will eventually be

applied to the entire Corps portfolio with systematic updating from supplemental assessments provided during the periodic inspection of the project.

The second level, the PRA, is more rigorous than the SPRA. It assess actual risk, while looking at alternative risk investments. More engineering and economic information is required.

This presentation will focus on the evaluation process and results for the initial level (SPRA) that is currently underway.



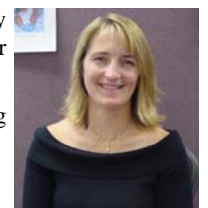
Bio: Kristie Hartfeil

I grew up in West Linn, Oregon. I attended Cornell University for my freshman year and then returned to Oregon State for the remainder of my college career. I received a Bachelor and Master of Science in Civil Engineering from OSU in 1990 and 1992. Most of my coursework focused on environmental, geotechnical, and sanitary engineering.

I worked for the Portland Water Bureau as an Engineering Trainee for the latter half of my college career. My first job after receiving my M.S. was working for GeoEngineers, Incorporated in their Seattle office from 1992 to 1993 and in their Portland office from 1993 to 1994. Between 1994 and 2000, I worked for Cornforth Consultants. I worked for Economic and Engineering Services between 2000 and 2002. I have been with the Corps of Engineers since 2002. Some of the highlights of my career include working on the design and construction of the Fern Ridge Dam Repair, Barney Reservoir Expansion, and The Dalles Dam Spillwall Project and SPRA evaluations for the Corps.

I have a PE in Oregon, Washington, and California since 1996. I received the Young Government Engineer of the Year from ASCE in 2003.

I recently got married and we are expecting a baby in boy in March.





Message From The Chair

Surely you have heard the annual cliché that it is time to get back to business now that the holiday season is over. I am pleased to report that the Oregon AEG group did not seem to be effected by the December lull. The meeting was well attended and as lively as ever. The draw for the evening was a presentation by Brent Black of Cornforth Consultants. Brent gave a great presentation about

rockfall protection for penstock and electrical generating facility in Prospect, Oregon.

The January meeting will be the annual joint meeting with the ASCE Oregon Section Geotechnical Group. The meeting will be at the McMenamins Kennedy School. The Oregon AEG group had an enjoyable meeting at this venue last year. We look forward to another big crowd and a good time this

year.

Reserve some time on your calendar for the February Oregon AEG meeting where Chris Goldfinger of Oregon State University will give a presentation regarding earthquake research related to the Cascadia Subduction Zone.

Michael Zimmerman, AEG
Oregon Section Chair

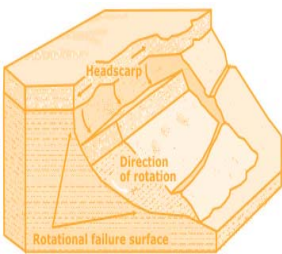
AEG Launches New Online Career Center

The Association of Environmental and Engineering Geologists has launched their new interactive job board, the AEG Career Center. With its focus the environmental and engineering geology industry, the AEG Career Center offers its community members—and the industry at large—an easy-to-use and highly targeted resource for online employment connections. All industry employers can use the AEG Career Center to reach

qualified candidates. Employers can post jobs online, search for qualified candidates based on specific job criteria, and create an online resume agent to email qualified candidates daily. They also benefit from online reporting that provides job activity statistics.

For job seekers, the AEG Career Center is a free service that provides access to employers and jobs. In addition to posting their resumes, job seekers can browse

and view available jobs based on their criteria and save those jobs for later review if they choose. Job seekers can also create a search agent to provide email notifications of jobs that match their criteria. Make an employment connection on the AEG Career Center today!



Planning Meeting for Spring '07 DOGAMI/USGS Landslide Symposium

Save the dates:

April 26, 2007—DOGAMI/USGS Landslide Symposium

April 27-28, 2007—AEG field trips

Thanks to all who attended the first planning meeting for the DOGAMI/USGS Landslide Symposium. The second planning meeting will be held immediately before the next ASCE/AEG dinner meeting from 4pm to 6pm, Tuesday January 16, 2007. The planning meeting will be led by Yumei Wang and Bill Burns in the Courtyard Restaurant/Bar of the Kennedy School (5736 NE 33rd Avenue, Portland, OR, 503-249-3983). The symposium will discuss new tools and techniques for developing regional hazard maps and future risk management practices. NO RSVP is needed. Just show up!



“Keen observation is at least as necessary as penetrating analysis”

Karl Terzaghi

DOGAMI Releases Oregon Geology—Needs Submittals

DOGAMI will be publishing two issues of Oregon Geology a year as a journal on their website. They believe Oregon Geology is an important publication, offering a unique and suitable place to share information about Oregon that is useful for the geoscience community and ultimately for all Oregonians. Please help them by continuing to read the journal Oregon Geology and submit articles.

The latest publications and information about submitting an article can be viewed online at:

<http://www.oregongeology.com/sub/publications/OG/OGv67n01.pdf>



The Oregon Section Newsletter

OREGON SECTION AEG NEWSLETTER is published monthly from September through May. Subscriptions are for members of AEG affiliated with the Oregon Section or other Sections, and other interested people who have requested and paid a local subscription fee of \$10.00. E-

mail subscriptions are free. News items are invited and should be sent to: Bill Burns, OR Section AEG Newsletter Editor, Oregon Department of Geology, 800 NE Oregon Street, Portland, OR 97232, e-mail: bill.burns@dogami.state.or.us, phone (971) 673-1555. Electronic

media is preferred. Deadline for submittal is Friday three weeks before each meeting. Advertising: business card \$10/mo, \$100/yr; ¼ page \$30/mo, \$200/yr; ½ page \$35/mo, \$350/yr. Please notify Bill if you have a change to your email or mailing address.

The Oregon Section is also on the web at <http://www.aegoregon.org>
National AEG webpage: <http://aegweb.org>


Thanks For Supporting AEG !

- AMEC
- Columbia Geotechnical
- Cornforth Consultants
- Oregon Department of Geology and Mineral Industries (DOGAMI)
- Geo-Tech Explorations
- GRI
- Kuper Consulting
- Northwest Geophysical Assoc.
- Oregon Department of Forestry (ODF)
- PBS Engineering and Environmental
- PSI
- Portland State University

Geo-Tech Explorations
A Division of Boart Longyear Company

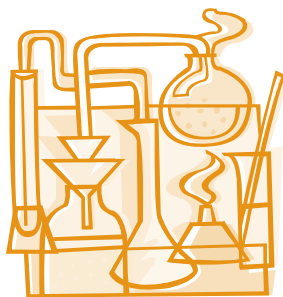
Providing Professional Drilling Services Since 1981

Hollow Stem Auger / Mud Rotary / Air Rotary
Geoprobe / CPT / Bucket Auger / Cable Tool
Reverse Circulation / Pump Services
Well Rehabilitation



Construction Dewatering Wells
Environmental Investigations
Large Diameter Water Wells
Geotechnical Investigations
Construction Borings
Aquifer Tests

Phone: 800-275-3885 or 503-692-6400
Fax: 503-692-4759



Section Officers & Committee Chairs



Chair:
Michael Zimmerman
GRI, Inc.
mzimmerman@gri.com



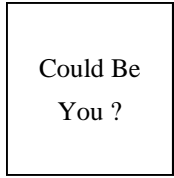
Program Co-Chair:
Lisa Glonek
Hart Crowser, Inc.
lisa.glonek@hartcrowser.com



Legislature Chair:
Dorian Kuper
Kuper Consulting
dkuper@cybcon.com



Chair Elect:
Matt Brunengo
PSU and WA DNR
mbrunengo@aol.com



Program Co-Chair:
Vacant



Continuing Education Liaison:
Andrew Harvey
PBS
andrewharvey@pbsenv.com



Secretary:
Jason Hinkle
ODF
jhinkle@odf.state.or.us



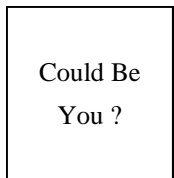
Membership Chair:
Ruth Wilmoth
Columbia Geotechnical, Inc.
ruthwilmoth@comcast.net



Newsletter Editor:
Bill Burns
DOGAMI
bill.burns@dogami.state.or.us



Treasurer:
Dave Scofield
ACOE
scofield@onemain.com



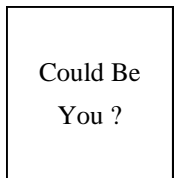
Field-Trip Chair:
Vacant



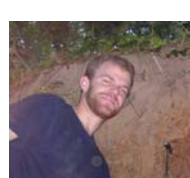
Webpage Editor:
Darren Beckstrand
Cornforth Consultants
dbeckstrand@



Past-Chair:
Brent Black
Cornforth Consultants
bblack@cornforthconsultnts.com



History Chair:
Vacant



cornforthconsultants.com
PSU Student Chapter President:
Josh Theule

Photos of the Month

White River Bridge on Highway 35, November 7, 2006 the day after several debris flows came down from the White River Glacier on Mt Hood. Photo by Doug Jones of ODOT. Second photo is also the White River Bridge nearly one month later during the middle of December with ODOT crew hard at work. Photo by Dave Riley President & Chief Operating Officer of Mt. Hood Meadows.

To submit a photo, please email the picture in a JPEG or TIF format to bill.burns@dogami.state.or.us. Also include a short paragraph describing the photo and project.

